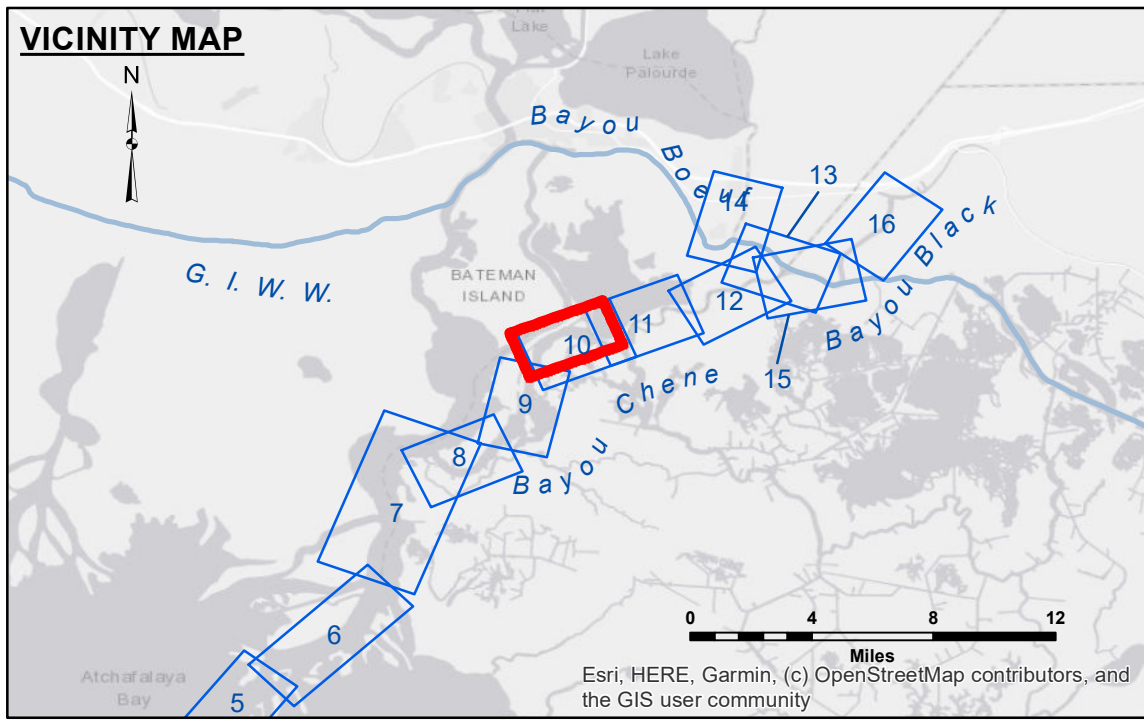


Distribution Liability: The data represents the results of data collection/processing for a specific US Army Corps of Engineers project. It is only valid for its intended use, contract, time and accuracy specifications. The user is responsible for the results. The user's application of the data for other than its intended purpose is at their own risk. The US Army Corps of Engineers does not accept any liability for damage or injury to persons or property resulting from the use of this data. Data Constants: Hydrographic survey data is subject to change rapidly due to several factors including but not limited to changing hydrographic conditions which develop after the date of the survey. The US Army Corps of Engineers does not accept any liability for changes in the hydrographic conditions which develop after the date of the survey. The information depicted on this map represents the results of a survey conducted at the time the map was prepared. It is not intended to represent the general condition existing at that time.

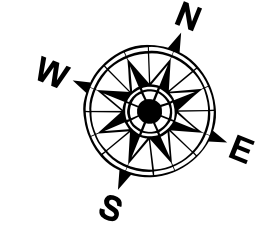
Submitted:	Surveyed By: PM,JA
Recommended:	Plotted By: JHI
Approved:	Checked By: JHI

U.S. ARMY CORPS OF ENGINEERS
NEW ORLEANS DISTRICT

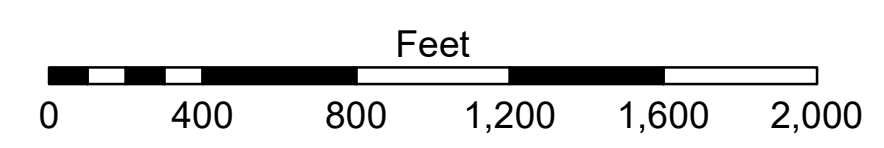
**ATCHAFALAYA RIVER
BAYOU CHENE
AR_10_CHE_20230426_PR
26 April 2023**



LEGEND		
--- Federal Navigation Channel	○ Cable Area	□ Borrow Area
— Federal Navigation Center Line	■ Placement Area	● Shoalest Sounding**
— As-built Pipeline/Cable	⊗ Anchorage Area	★ Beacon, General
⋯ Unconfirmed Pipeline/Cable	⊗ Obstruction Point	◆ Red Navigation Buoy
— Project Depth Contour	⚓ Wrecks-Submerged	◆ Green Navigation Buoy
		■ -15' and above
		■ -15' to -20'
		■ -20' and below



Gage Reading: NTRIP RTK VRS: 5.60 MLG AVG
Sea Conditions: CALM
Vessel Name: OB-167
Survey Type: CONDITION
Sounding Frequency***: LOW



NOTES:
Horizontal Coordinate System: North American Datum of 1983 (NAD83), projected to the State Plane Coordinate System (SPCS), Louisiana South Zone. Distance units in U.S. Survey Feet.
Vertical Datum: Soundings are shown in feet and indicate depths below Mean Low Gulf Datum (MLG). Datum Relationships for gage 03820 as of August 2013: -0.7' MLLW = 0.0' NAVD88 = 2.9' MLG
Distances on the Atchafalaya River are shown at 1 mile intervals.
The location of navigation aids are base on and provided by the U.S. Coast Guard.
2019 Aerial Photography data source: P.A.R. LLC
Reference is N.O.A.A. Navigation Chart No. 11354.
** Shoalest Sounding per Quarter per Reach.
*** High frequency (200 kHz) survey data represents the first signal return at a sounding location and will include suspended solids, known as "fluff", if present. Low frequency (20 kHz) survey data normally penetrates through this "fluff" layer to depict elevations of consolidated bottom material. Low frequency accuracies may vary depending on channel conditions and fathometer settings.

**Sheet Reference Number
10 of 16**
Revision Number:
4.2-20230426