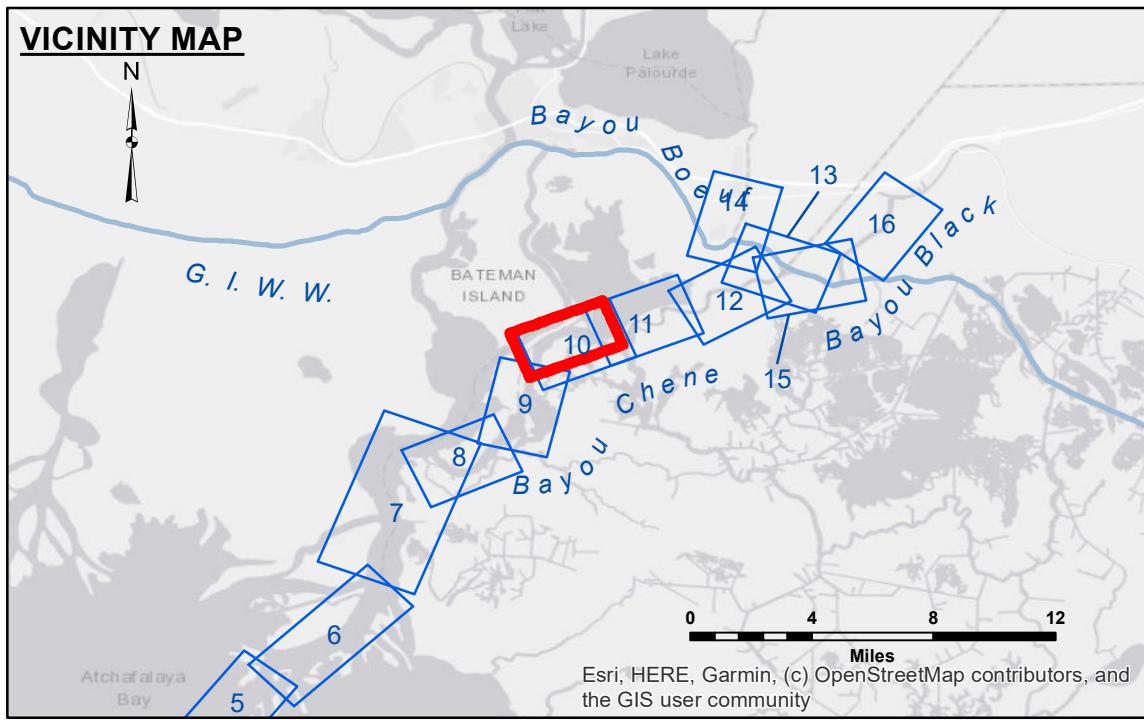


Distribution Liability: The data represents the results of data collection/processing for a specific US Army Corps of Engineers project. It is only valid for its intended use, contract, time and accuracy specifications. The user is responsible for the results. The user's application of the data for other than its intended purpose is at their own risk. The US Army Corps of Engineers does not assume any liability for damage or injury resulting from the use of this data for purposes other than those intended. Data Constants Hydrographic survey data is subject to change rapidly due to several factors including but not limited to changing hydrographic conditions which develop after the date of the survey. The US Army Corps of Engineers accepts no responsibility for changes in the hydrographic conditions which develop after the date of the survey. The information depicted on this map represents the results of a survey conducted at the time the map was prepared. It is not intended to represent the general condition existing at that time.

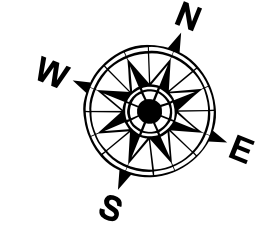
Submitted:	Surveyed By:	CHAMPINE/SCHAFFER
Recommended:	Plotted By:	JHI
Approved:	Checked By:	JHI

U.S. ARMY CORPS OF ENGINEERS
NEW ORLEANS DISTRICT

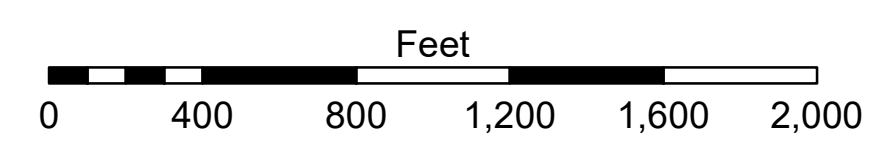
**ATCHAFALAYA RIVER
BAYOU CHENE
AR_10_CHE_20230706_CS
06 July 2023**



LEGEND	
--- Federal Navigation Channel	○ Cable Area
— Federal Navigation Center Line	□ Placement Area
— As-built Pipeline/Cable	□ Anchorage Area
..... Unconfirmed Pipeline/Cable	⊗ Obstruction Point
— Project Depth Contour	✈ Wrecks-Submerged
□ Borrow Area	★ Beacon, General
● Shoalest Sounding**	◆ Red Navigation Buoy
◆ -15' and above	◆ Green Navigation Buoy
◆ -15' to -20'	
◆ -20' and below	



Gage Reading: SWEET BAY DM12: 4.47 MLG
 Sea Conditions: CALM
 Vessel Name: OB 169
 Survey Type: CS
 Sounding Frequency***: HIGH



NOTES:
 Horizontal Coordinate System: North American Datum of 1983 (NAD83), projected to the State Plane Coordinate System (SPCS), Louisiana South Zone. Distance units in U.S. Survey Feet.
 Vertical Datum: Soundings are shown in feet and indicate depths below Mean Low Gulf Datum (MLG). Datum Relationships for gage 03820 as of August 2013: -0.7' MLLW = 0.0' NAVD88 = 2.9' MLG
 Distances on the Atchafalaya River are shown at 1 mile intervals.
 The location of navigation aids are base on and provided by the U.S. Coast Guard.
 2019 Aerial Photography data source: P.A.R. LLC
 Reference is N.O.A.A. Navigation Chart No. 11354.
 ** Shoalest Sounding per Quarter per Reach.
 *** High frequency (200 kHz) survey data represents the first signal return at a sounding location and will include suspended solids, known as "fluff", if present. Low frequency (20 kHz) survey data normally penetrates through this "fluff" layer to depict elevations of consolidated bottom material. Low frequency accuracies may vary depending on channel conditions and fathometer settings.

**Sheet Reference Number
10 of 16**

Revision Number:
4.2-20240420