

CONTRACTOR LIABILITY: The data represents the results of data collection/processing for a specific US Army Corps of Engineers activity and indicates the general existing conditions. As such, the contractor is responsible for the accuracy, completeness, and reliability of the data for the intended use. The user is responsible for the results of any of the application of the data for other than its intended purpose.

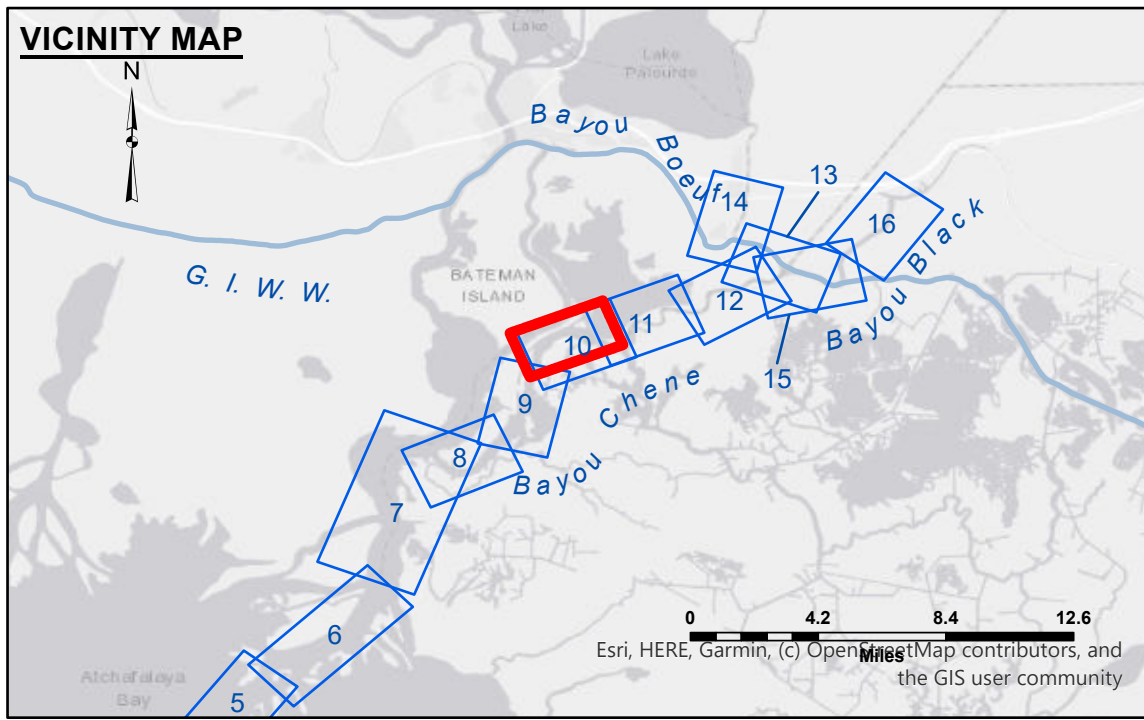
DISCLAIMER: The United States Government furnishes these data and the recipient accepts and uses them with the express understanding that the data are not to be used for any purpose other than that for which they were prepared, or implied concerning the accuracy, completeness, reliability, usability or suitability for any particular purpose of the recipient. The recipient is responsible for the accuracy, completeness, and reliability of the data for the intended use. The U.S. Government makes no warranty, express or implied, in the data and the recipient is responsible for the accuracy, completeness, and reliability of the data for the intended use. The U.S. Government makes no warranty, express or implied, in the data and the recipient is responsible for the accuracy, completeness, and reliability of the data for the intended use. The U.S. Government makes no warranty, express or implied, in the data and the recipient is responsible for the accuracy, completeness, and reliability of the data for the intended use.

DISCLAIMER: The United States Government furnishes these data and the recipient accepts and uses them with the express understanding that the data are not to be used for any purpose other than that for which they were prepared, or implied concerning the accuracy, completeness, reliability, usability or suitability for any particular purpose of the recipient. The recipient is responsible for the accuracy, completeness, and reliability of the data for the intended use. The U.S. Government makes no warranty, express or implied, in the data and the recipient is responsible for the accuracy, completeness, and reliability of the data for the intended use. The U.S. Government makes no warranty, express or implied, in the data and the recipient is responsible for the accuracy, completeness, and reliability of the data for the intended use.

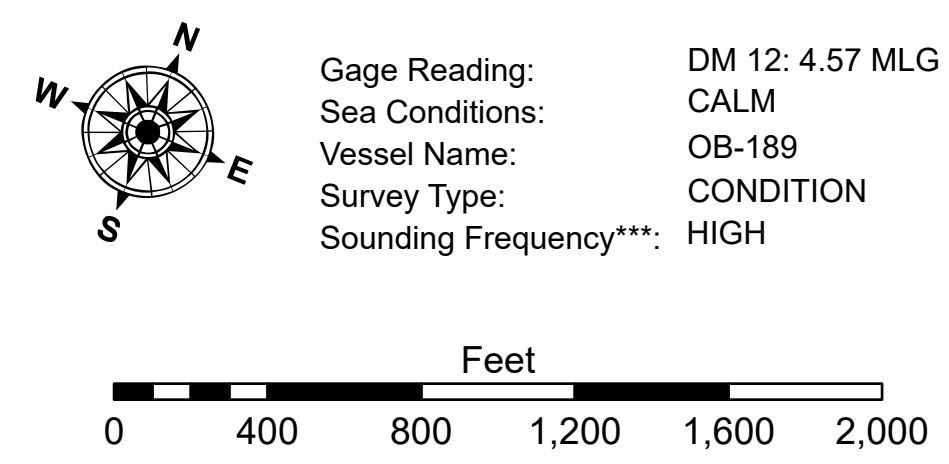
Submitted:	Surveyed By:	CHAMPINE/ADAMS
Recommended:	Plotted By:	BD
Approved:	Checked By:	AO/JH

U.S. ARMY CORPS OF ENGINEERS
NEW ORLEANS DISTRICT

**ATCHAFALAYA RIVER
BAYOU CHENE
AR_10_CHE_20250411_CS
11 April 2025**



LEGEND	
--- Federal Navigation Channel	○ Cable Area
— Federal Navigation Center Line	□ Placement Area
— As-built Pipeline/Cable	□ Anchorage Area
..... Unconfirmed Pipeline/Cable	⊗ Obstruction Point
— Project Depth Contour	⚓ Wrecks-Submerged
□ Borrow Area	★ Beacon, General
● Shoalest Sounding**	♦ Red Navigation Buoy
★ Beacon, General	♦ Green Navigation Buoy
♦ Red Navigation Buoy	■ -12' and above
♦ Green Navigation Buoy	■ -12' to -15'
	■ -15' to -18'
	■ -18' to -20'
	■ -20' and below
	3 Fluff Thickness*



NOTES:

Horizontal Coordinate System: North American Datum of 1983 (NAD83), projected to the State Plane Coordinate System (SPCS), Louisiana South Zone. Distance units in U.S. Survey Feet.

Vertical Datum: Soundings are shown in feet and indicate depths below Mean Low Gulf Datum (MLG). Datum Relationships for gage 03820 as of August 2020: 0.0' NAVD88 = 3.07' MLG

Distances on the Atchafalaya River are shown at 1 mile intervals.

The location of navigation aids are base on and provided by the U.S. Coast Guard.

2019 Aerial Photography data source: P.A.R. LLC

Reference is N.O.A.A. Navigation Chart No. 11354.

** Shoalest Sounding per Quarter per Reach.

*** High frequency (200 kHz) survey data represents the first signal return at a sounding location and will include suspended solids, known as "fluff", if present. Low frequency (20 kHz) survey data normally penetrates through this "fluff" layer to depict elevations of consolidated bottom material. Low frequency accuracies may vary depending on channel conditions and fathometer settings.

**Sheet
Reference
Number
10 of 16**

Revision Number:
5.25.04.05-5.25.04.03