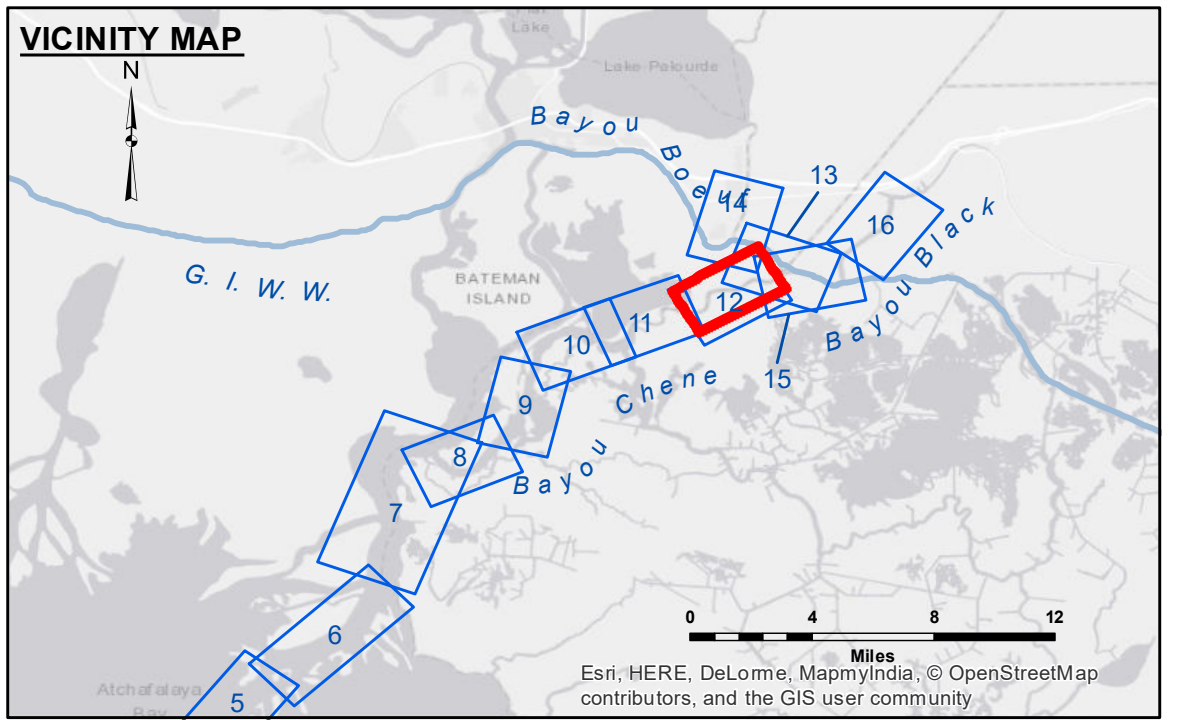


**DISCLAIMER:** The data represents the results of data collection processing for a specific US Army Corps of Engineers project. It is only valid for its intended use, control, time and accuracy specifications. The user is responsible for the results. The user shall not apply the data for other than its intended purpose. The application of the data for other than its intended purpose may result in injury, death, or property damage. The user shall indemnify and hold the US Army Corps of Engineers harmless for any and all claims, damages, costs, and expenses, including reasonable attorneys' fees, arising from or due to the use of the data for any purpose other than that for which it was intended. The information depicted on this map represents the results of a survey conducted on the ground. It is not intended to be used for any purpose other than that for which it was intended. The user shall indemnify and hold the US Army Corps of Engineers harmless for any and all claims, damages, costs, and expenses, including reasonable attorneys' fees, arising from or due to the use of the data for any purpose other than that for which it was intended.

Submitted:	Surveyed By: DS/JH
Recommended:	Planned By: BD
Approved:	Checked By: AC

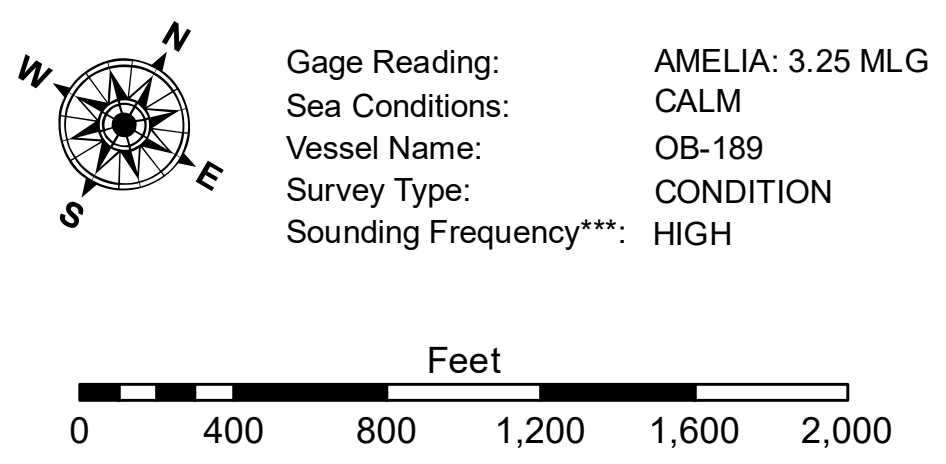
U.S. ARMY CORPS OF ENGINEERS  
NEW ORLEANS DISTRICT

**ATCHAFALAYA RIVER  
BAYOU CHENE  
AR\_12\_CHE\_20180712\_CS  
12 July 2018**



**LEGEND**

--- Federal Navigation Channel	● Cable Area	□ Borrow Area
— Federal Navigation Center Line	■ Placement Area	● Shoalest Sounding**
— As-built Pipeline/Cable	⊠ Anchorage Area	☆ Beacon, General
..... Unconfirmed Pipeline/Cable	⊗ Obstruction Point	◆ Red Navigation Buoy
— Project Depth Contour	⚓ Wrecks-Submerged	◆ Green Navigation Buoy



**NOTES:**

Horizontal Coordinate System:  
North American Datum of 1983 (NAD83), projected to the State Plane Coordinate System (SPCS), Louisiana South Zone. Distance units in U.S. Survey Feet.

Vertical Datum:  
Soundings are shown in feet and indicate depths below Mean Low Gulf Datum (MLG). Datum Relationships for gage 52800 as of August 2013:  
0.0' NAVD88 = 1.7' MLG

Distances on the Atchafalaya River are shown at 1 mile intervals.

The location of navigation aids are base on and provided by the U.S. Coast Guard.

2015 Aerial Photography data source: NAIP

Reference is N.O.A. Navigation Chart No. 11354.

\*\* Shoalest Sounding per Quarter per Reach.

\*\*\* High frequency (200 kHz) survey data represents the first signal return at a sounding location and will include suspended solids, known as "fluff", if present. Low frequency (20 kHz) survey data normally penetrates through this "fluff" layer to depict elevations of consolidated bottom material. Low frequency accuracies may vary depending on channel conditions and fathometer settings.

**Sheet Reference Number  
12 of 16**

Revision Number:  
3.12-20160811