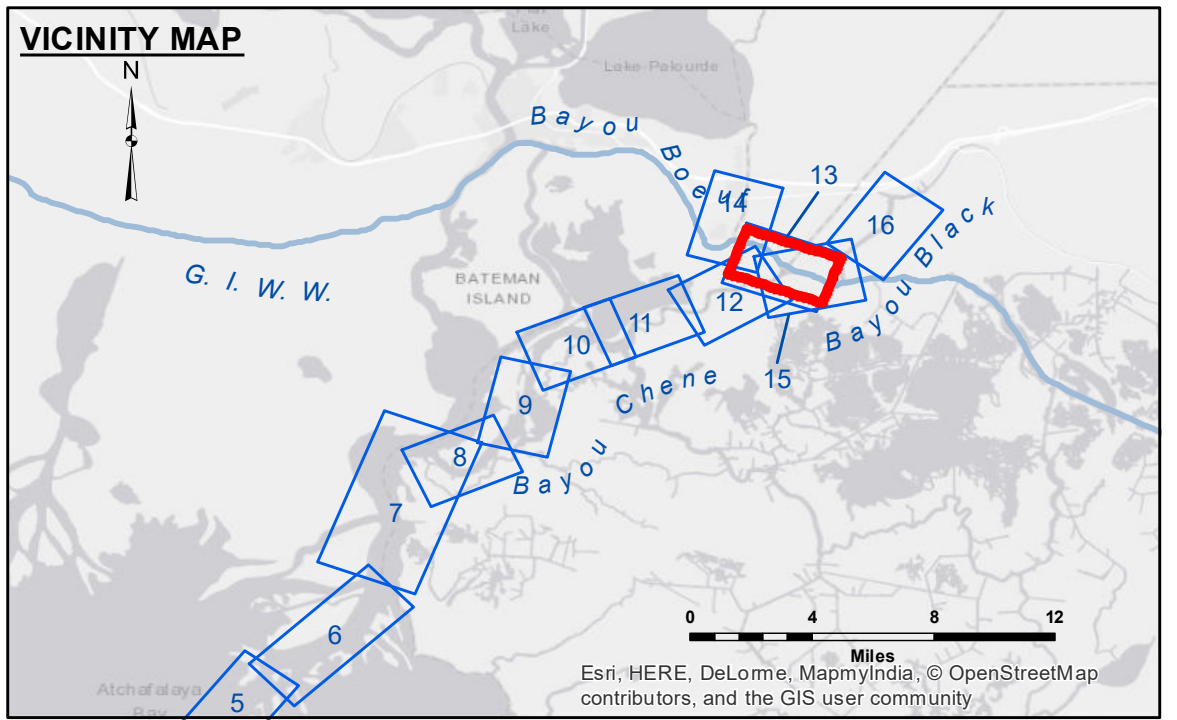


**DISCLAIMER:** The data represents the results of data collection processing for a specific US Army Corps of Engineers project. The user is responsible for the results and accuracy of the data. The user is responsible for the results and accuracy of the data. The user is responsible for the results and accuracy of the data. The user is responsible for the results and accuracy of the data.

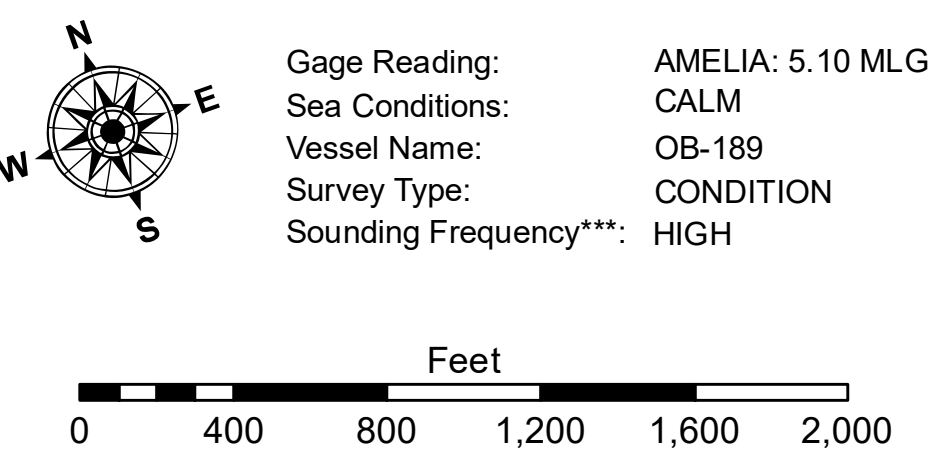
Submitted:	RYLAND/SOUKI
Recommended:	Checked By: AC
Approved:	Checked By: AC

**ATCHAFALAYA RIVER  
BAYOU BOEUF INT.  
AR\_13\_BUF\_20190315\_CS  
15 March 2019**



**LEGEND**

--- Federal Navigation Channel	● Cable Area	□ Borrow Area
— Federal Navigation Center Line	■ Placement Area	● Shoalest Sounding**
— As-built Pipeline/Cable	⊗ Anchorage Area	★ Beacon, General
..... Unconfirmed Pipeline/Cable	⊗ Obstruction Point	◆ Red Navigation Buoy
— Project Depth Contour	⊗ Wrecks-Submerged	◆ Green Navigation Buoy



**NOTES:**

Horizontal Coordinate System: North American Datum of 1983 (NAD83), projected to the State Plane Coordinate System (SPCS), Louisiana South Zone. Distance units in U.S. Survey Feet.

Vertical Datum: Soundings are shown in feet and indicate depths below Mean Low Gulf Datum (MLG). Datum Relationships for gage 52800 as of August 2013. 0.0' NAVD88 = 1.7' MLG

Distances on the Atchafalaya River are shown at 1 mile intervals.

The location of navigation aids are base on and provided by the U.S. Coast Guard.

2015 Aerial Photography data source: NAIP

Reference is N.O.A. Navigation Chart No. 11354.

\*\* Shoalest Sounding per Quarter per Reach.

\*\*\* High frequency (200 kHz) survey data represents the first signal return at a sounding location and will include suspended solids, known as "fluff", if present. Low frequency (20 kHz) survey data normally penetrates through this "fluff" layer to depict elevations of consolidated bottom material. Low frequency accuracies may vary depending on channel conditions and fathometer settings.

**Sheet Reference Number  
13 of 16**