

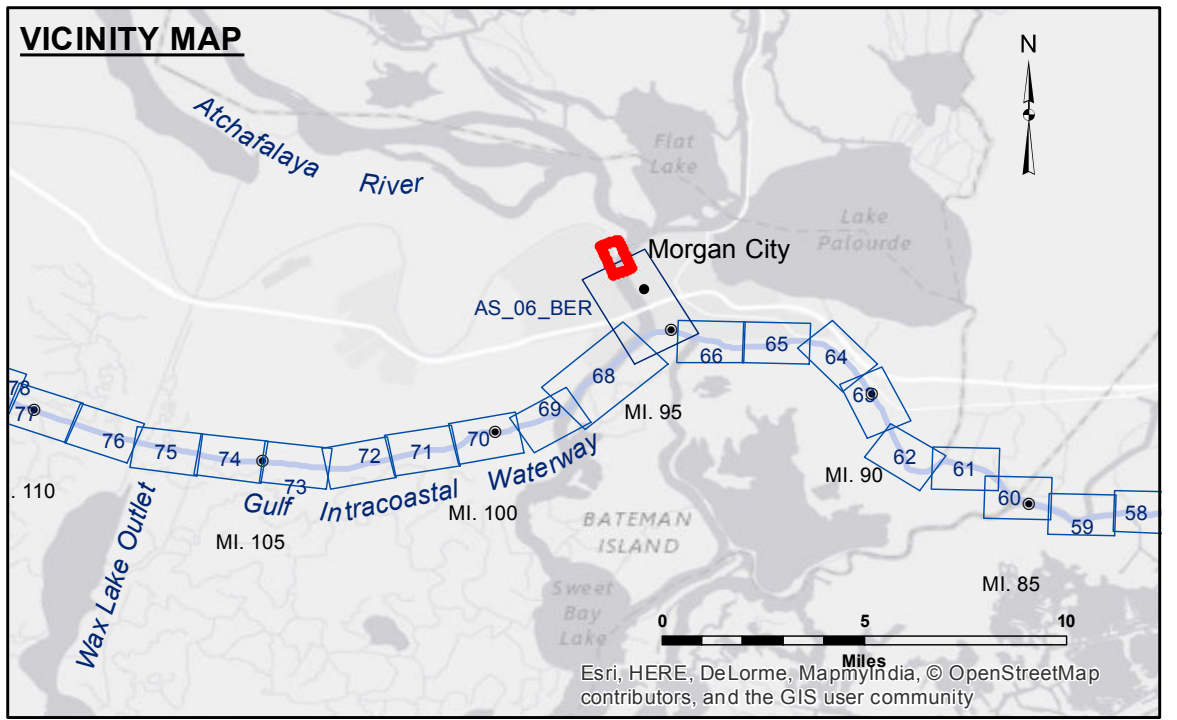
NOTES:

1. At the direction of the Contracting Officer, all dredged material shall be disposed beyond the -32 foot MLG contour of Atchafalaya River or into commercial borrow pits.
2. Actual authorized dimensions vary. Dredging assignments detailing the aC+

TABLE OF COORDINATES

① x=3315461.2 y=443192.84	④ x=3316249.1 y=441024.9
② x=3315543.64 y=442988.26	⑤ x=3316125.6 y=440150.7
③ x=3316217.7 y=441278.04	

VERTEX
 X=3,315,754.0
 Y= 441,094.9
 R= 500'
 DELTA= 29 35'59"



LEGEND

--- Federal Navigation Channel	○ Cable Area	□ Borrow Area	■ -12' and above
— Federal Navigation Center Line	□ Placement Area	● Shoalest Sounding**	□ -12' and below
— As-built Pipeline/Cable	□ Anchorage Area	★ Beacon, General	
..... Unconfirmed Pipeline/Cable	⊗ Obstruction Point	◆ Red Navigation Buoy	
— Project Depth Contour	⚓ Wrecks-Submerged	◆ Green Navigation Buoy	

Gage Reading: MORGAN CITY:3.74 MLG
Sea Conditions: CALM
Vessel Name: OB-167
Survey Type: CONDITION
Sounding Frequency*:** LOW

Reference is N.O.A.A. Navigation Chart No. 11355.

*** Shoalest Sounding per Quarter per Reach.

**** High frequency (200 kHz) survey data represents the first signal return at a sounding location and will include suspended solids, known as "fluff", if present. Low frequency (20 kHz) survey data normally penetrates through this "fluff" layer to depict elevations of consolidated bottom material. Low frequency accuracies may vary depending on channel conditions and fathometer settings.

NOTES: Coordinate System:
 North American Datum of 1983 (NAD83), projected to the State Plane
 Coordinate System (SPCS), Louisiana South Zone. Distance units in U.S. Survey Feet.

Vertical Datum:
 Soundings are shown in feet and indicate depths below Mean Low Gulf Datum (MLG).
 Datum Relationships for Lower Atchafalaya River at Morgan City (03780) as of May 2014:
 0.0' NAVD88 (2009.55) = 2.05' MLG

The location of navigation aids are base on and provided by the U.S. Coast Guard.
 2010 Aerial Photography data source: NAIP. 1998 DOQQ imagery shown in green from USGS.



Accession: The United States Government furnishes these data and the recipient accepts and uses them with the express understanding that the data are not to be used for any purpose other than that for which they were originally prepared. The user is responsible for the results. The user is not to be held liable for any damage or injury resulting from the use of these data. The user is not to be held liable for any damage or injury resulting from the use of these data. The user is not to be held liable for any damage or injury resulting from the use of these data.

Submitted:	Surveyed By: SPPM
Recommended: Chief Survey Section	Plotted By: BTD
Approved: Chief Waterways Maintenance Section	Checked By: AN

ATCHAFALAYA RIVER
BERWICK LOCK FOREBAY
AS_00_BLF_20151022
22 October 2015

Sheet
Reference
Number
1 of 1