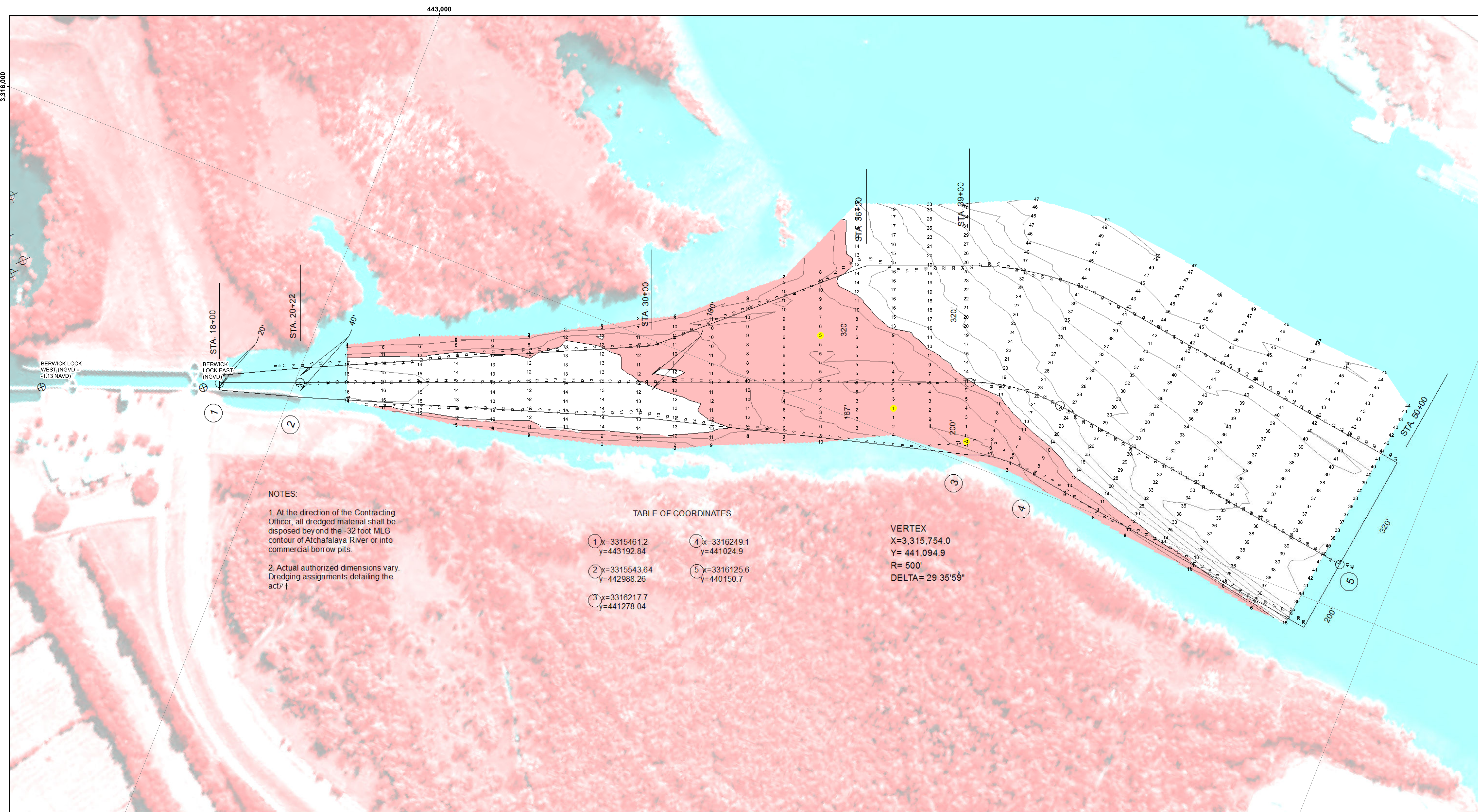




**US Army Corps of Engineers District: CEMVN**

**DISCLAIMER:** The data represents the results of data collection/processing for a specific US Army Corps of Engineers project. It is only valid for its intended use, control, time and accuracy specifications. The user is responsible for the results. The application of the data for other than its intended purpose is at the user's risk. Data Constants Hydrographic survey data is subject to change rapidly due to several factors including but not limited to changing hydrographic conditions when developed after the date of the survey. The US Army Corps of Engineers accepts no responsibility for changes in the hydrographic conditions when developed after the date of the survey. Product maintainers should not rely solely upon this information.



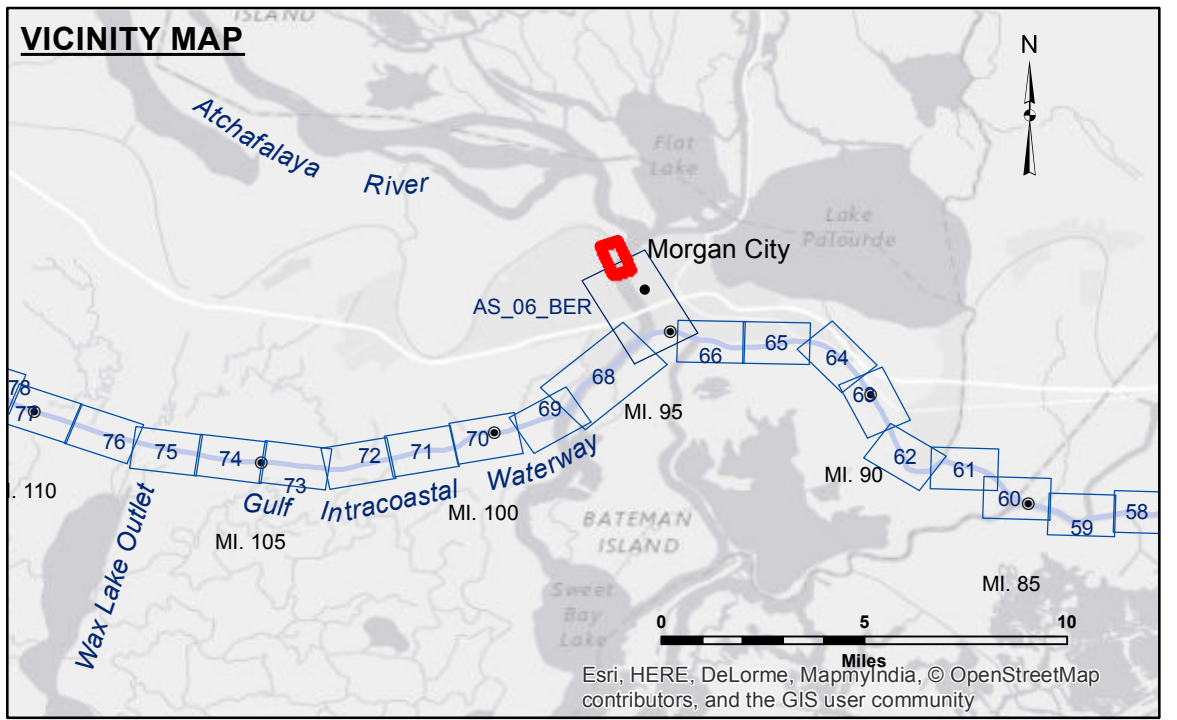
**NOTES:**

1. At the direction of the Contracting Officer, all dredged material shall be disposed beyond the -32 foot MLG contour of Atchafalaya River or into commercial borrow pits.
2. Actual authorized dimensions vary. Dredging assignments detailing the act.

**TABLE OF COORDINATES**

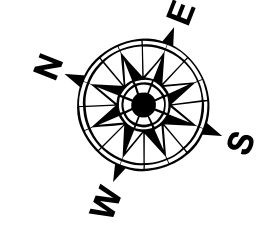
1	x=3315461.2 y=443192.84	4	x=3316249.1 y=441024.9
2	x=3315543.64 y=442988.26	5	x=3316125.6 y=440150.7
3	x=3316217.7 y=441278.04		

**VERTEX**  
 X=3,315,754.0  
 Y= 441,094.9  
 R= 500'  
 DELTA= 29 35'59"

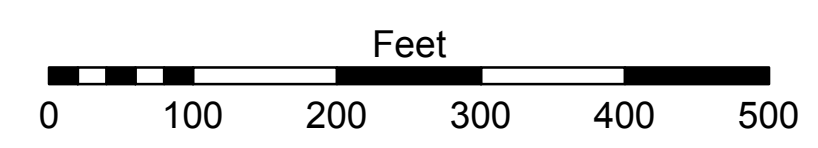


**LEGEND**

--- Federal Navigation Channel	○ Cable Area	□ Borrow Area	■ -12' and above
— Federal Navigation Center Line	□ Placement Area	● Shoalest Sounding**	□ -12' and below
— As-built Pipeline/Cable	□ Anchorage Area	★ Beacon, General	
..... Unconfirmed Pipeline/Cable	⊗ Obstruction Point	◆ Red Navigation Buoy	
— Project Depth Contour	⚓ Wrecks-Submerged	◆ Green Navigation Buoy	



Gage Reading: MORGAN CITY: 4.43 MLG  
 Sea Conditions: CALM  
 Vessel Name: OB-189  
 Survey Type: CONDITION  
 Sounding Frequency\*\*\*: LOW



**NOTES:** Coordinate System: North American Datum of 1983 (NAD83), projected to the State Plane Coordinate System (SPCS), Louisiana South Zone. Distance units in U.S. Survey Feet.

Vertical Datum: Soundings are shown in feet and indicate depths below Mean Low Gulf Datum (MLG). Datum Relationships for Lower Atchafalaya River at Morgan City (03780) as of May 2014: 0.0' NAVD88 (2009.55) = 2.05' MLG

The location of navigation aids are base on and provided by the U.S. Coast Guard. Reference is N.O.A.A. Navigation Chart No. 11355.

\*\* Shoalest Sounding per Quarter per Reach.

\*\*\* High frequency (200 kHz) survey data represents the first signal return at a sounding location and will include suspended solids, known as "fluff", if present. Low frequency (20 kHz) survey data normally penetrates through this "fluff" layer to depict elevations of consolidated bottom material. Low frequency accuracies may vary depending on channel conditions and fathometer settings.

**U.S. ARMY CORPS OF ENGINEERS NEW ORLEANS DISTRICT**

Submitted:	Surveyed By: SPDS
Recommended: Chief Survey Section	Plotted By: BD
Approved: Chief Waterways Maintenance Section	Checked By: AC

**ATCHAFALAYA RIVER  
 BERWICK LOCK FOREBAY  
 AS\_00\_BLF\_20170720\_CS  
 20 July 2017**

**Sheet  
 Reference  
 Number  
 1 of 1**