

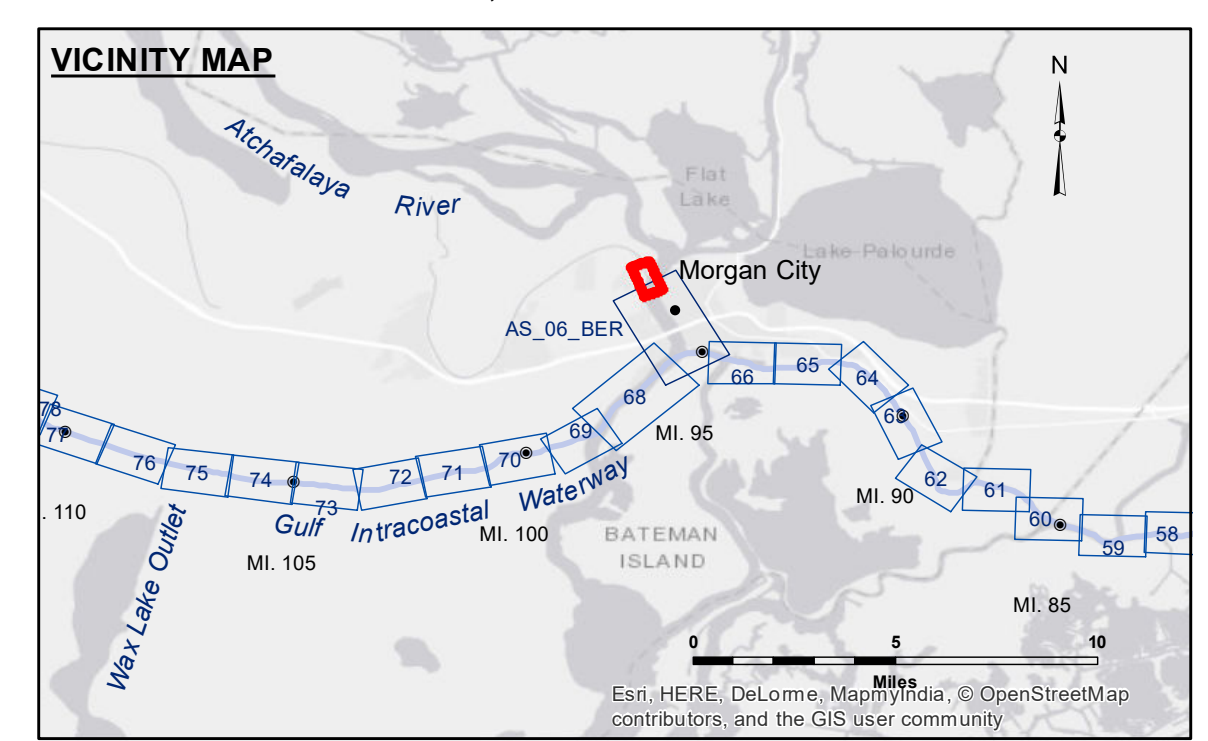
NOTES:

1. At the direction of the Contracting Officer, all dredged material shall be disposed beyond the -32 foot MLG contour of Atchafalaya River or into commercial borrow pits.
2. Actual authorized dimensions vary. Dredging assignments detailing the act.

TABLE OF COORDINATES

① x=3315461.2 y=443192.84	④ x=3316249.1 y=441024.9
② x=3315543.64 y=442988.26	⑤ x=3316125.6 y=440150.7
③ x=3316217.7 y=441278.04	

VERTEX
 X=3,315,754.0
 Y= 441,094.9
 R= 500'
 DELTA= 29 35'59"



LEGEND

--- Federal Navigation Channel	○ Cable Area	□ Borrow Area	■ -12' and above
— Federal Navigation Center Line	□ Placement Area	● Shoalest Sounding**	□ -12' and below
— As-built Pipeline/Cable	□ Anchorage Area	★ Beacon, General	
..... Unconfirmed Pipeline/Cable	⊗ Obstruction Point	◆ Red Navigation Buoy	
— Project Depth Contour	⚓ Wrecks-Submerged	◆ Green Navigation Buoy	

Gage Reading: MORGAN CITY: 3.0 MLG
Sea Conditions: CALM
Vessel Name: OB-189
Survey Type: CONDITION
Sounding Frequency*:** HIGH

Vertical Datum:
 Soundings are shown in feet and indicate depths below Mean Low Gulf Datum (MLG).
 Datum Relationships for Lower Atchafalaya River at Morgan City (03780) as of May 2014:
 0.0' NAVD88 (2009.55) = 2.05' MLG

The location of navigation aids are base on and provided by the U.S. Coast Guard.
 2015 Aerial Photography data source: NAIP.
 Reference is N.O.A.A. Navigation Chart No. 11355.
 ** Shoalest Sounding per Quarter per Reach.
 *** High frequency (200 kHz) survey data represents the first signal return at a sounding location and will include suspended solids, known as "fluff", if present. Low frequency (20 kHz) survey data normally penetrates through this "fluff" layer to depict elevations of consolidated bottom material. Low frequency accuracies may vary depending on channel conditions and fathometer settings.



DISCLAIMER:
 The data represents the results of data collection performed for a specific US Army Corps of Engineers project and is only valid for its intended use, control, time and accuracy specifications. The user is responsible for the results and the application of the data for other than its intended purpose.
 Data Contaminants: Hydrographic survey data is subject to change rapidly due to several factors including but not limited to dredging, sedimentation, and other channel changes. The user is responsible for the results of the data and should verify the hydrographical conditions when developing the data of a project. The information depicted on this map represents the results of a survey and is not intended to be used as a legal boundary or to represent the general condition existing at that time.

**U.S. ARMY CORPS OF ENGINEERS
 NEW ORLEANS DISTRICT**

Submitted:	Surveyed By: RYLAND/ADAMS
Recommended: Chief Survey Section	Plotted By: BD
Approved: Chief Waterways Maintenance Section	Checked By: AC

**ATCHAFALAYA RIVER
 BERWICK LOCK FOREBAY
 AS_00_BLF_20180208_CS
 08 February 2018**

**Sheet
 Reference
 Number
 1 of 1**

Revision Number:
 3.13-20160811