

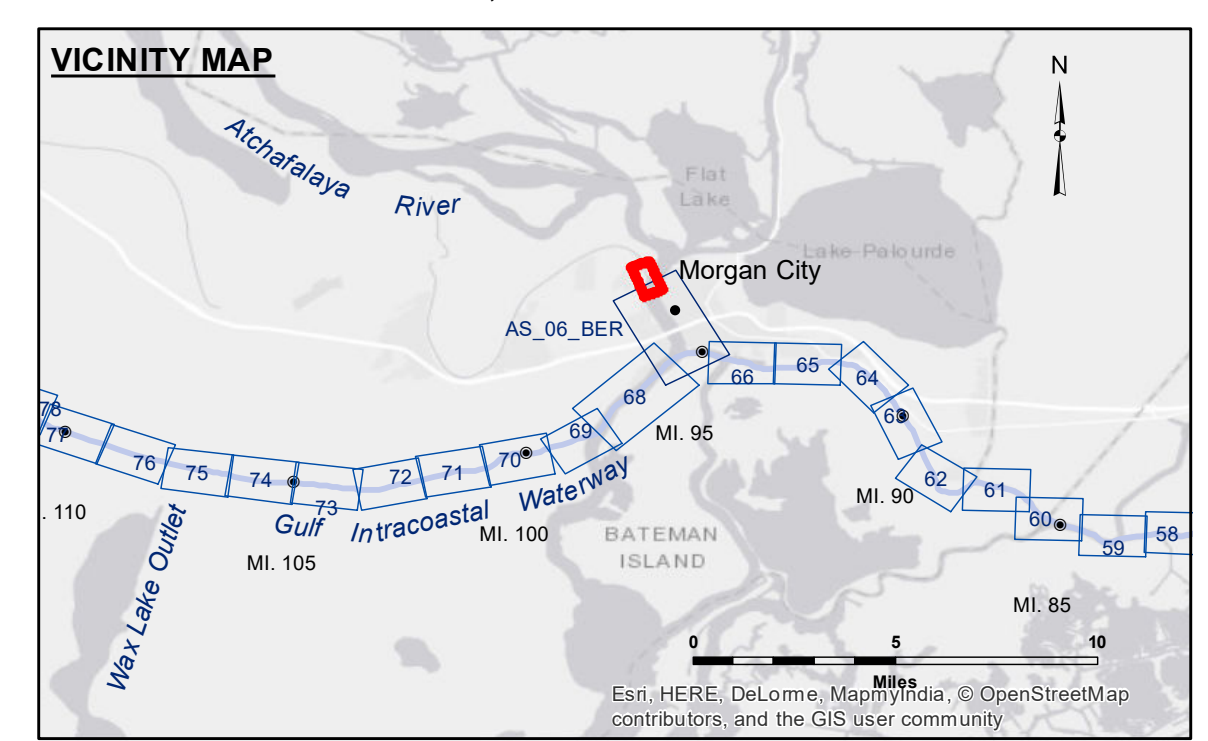
NOTES:

1. At the direction of the Contracting Officer, all dredged material shall be disposed beyond the -32 foot MLG contour of Atchafalaya River or into commercial borrow pits.
2. Actual authorized dimensions vary. Dredging assignments detailing the actz ll

TABLE OF COORDINATES

① x=3315461.2 y=443192.84	④ x=3316249.1 y=441024.9
② x=3315543.64 y=442988.26	⑤ x=3316125.6 y=440150.7
③ x=3316217.7 y=441278.04	

VERTEX
X=3,315,754.0
Y= 441,094.9
R= 500'
DELTA= 29 35'59"



LEGEND

— Federal Navigation Channel	○ Cable Area	□ Borrow Area	■ -12' and above
— Federal Navigation Center Line	□ Placement Area	● Shoalest Sounding**	□ -12' and below
— As-built Pipeline/Cable	□ Anchorage Area	★ Beacon, General	
..... Unconfirmed Pipeline/Cable	⊗ Obstruction Point	◆ Red Navigation Buoy	
— Project Depth Contour	⚓ Wrecks-Submerged	◆ Green Navigation Buoy	

Gage Reading: MORGAN CITY: 7/10 MLG
Sea Conditions: CALM
Vessel Name: OB-189
Survey Type: CONDITION
Sounding Frequency***: HIGH

Vertical Datum:
Soundings are shown in feet and indicate depths below Mean Low Gulf Datum (MLG).
Datum Relationships for Lower Atchafalaya River at Morgan City (03780) as of May 2014:
0.0' NAVD88 (2009.55) = 2.05' MLG

The location of navigation aids are base on and provided by the U.S. Coast Guard.
Reference is N.O.A.A. Navigation Chart No. 11355.
2015 Aerial Photography data source: NAIP.
*** Shoalest Sounding per Quarter per Reach.

*** High frequency (200 kHz) survey data represents the first signal return at a sounding location and will include suspended solids, known as "fluff", if present. Low frequency (20 kHz) survey data normally penetrates through this "fluff" layer to depict elevations of consolidated bottom material. Low frequency accuracies may vary depending on channel conditions and fathometer settings.



Access/Availability: The United States Government furnishes these data and the recipient accepts and uses them with the express understanding that they are for official use only and that they are not to be distributed, copied, or reproduced in any form or by any means, electronic or mechanical, including photocopying, recording, or by any information storage and retrieval system, without the express written permission of the United States Army Corps of Engineers. The user is responsible for the results of any use of these data for any purpose other than that intended. The user shall indemnify and hold the United States Army Corps of Engineers harmless from and against all claims, damages, losses, and expenses, including reasonable attorneys' fees, that may be incurred by the United States Army Corps of Engineers as a result of the use of these data for any purpose other than that intended.

Submitted:	Surveyed By: RYLAND/SONNER
Recommended: Chief Survey Section	Plotted By: BD
Approved: Chief Waterways Maintenance Section	Checked By: AC

U.S. ARMY CORPS OF ENGINEERS
NEW ORLEANS DISTRICT

**ATCHAFALAYA RIVER
BERWICK LOCK FOREBAY
AS_00_BLF_20180419_CS**

19 April 2018

**Sheet
Reference
Number**
1 of 1