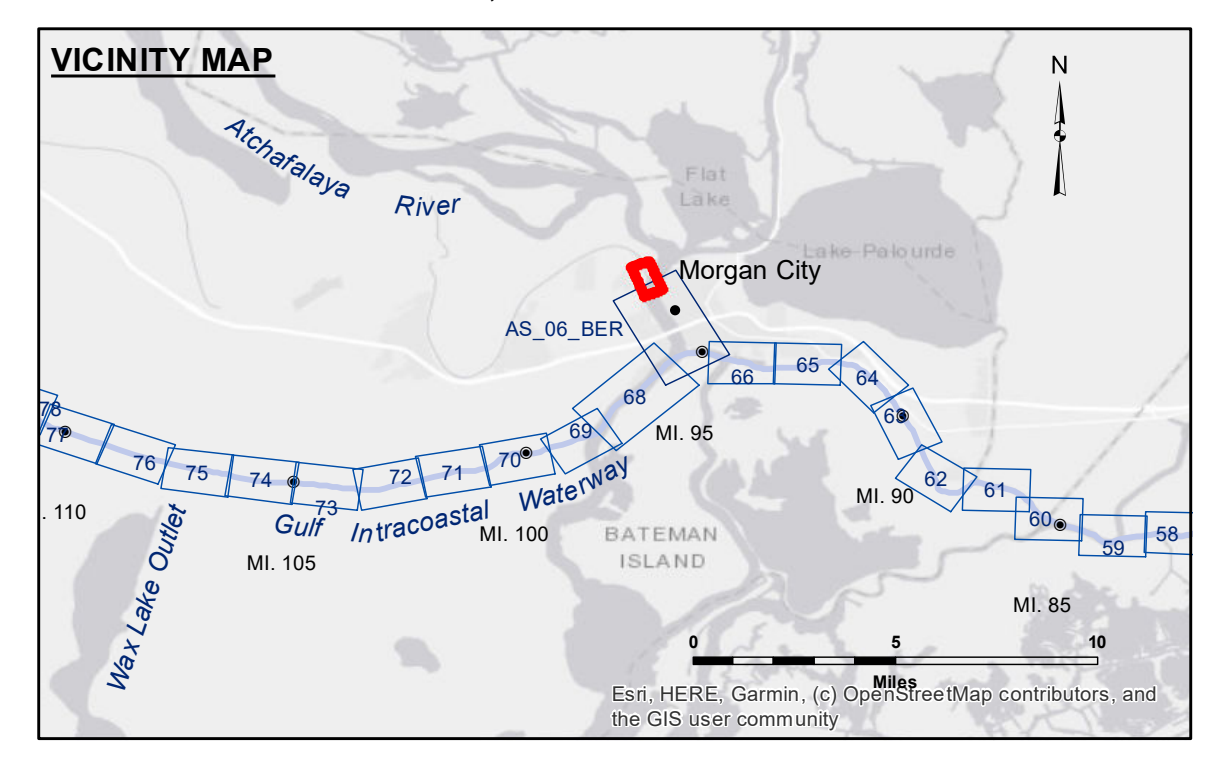


DISCLAIMER: The data represents the results of data collection processing for a specific US Army Corps of Engineers project. It is not intended for use in any other project. It is only valid for its intended use, control, time and accuracy specifications. The user is responsible for the results. The user shall be responsible for the application of the data for other than its intended purpose. Data Contaminants: Hydrographic survey data is subject to change rapidly due to several factors including but not limited to dredging, sedimentation, and other factors. The user shall be responsible for changes in the hydrographical conditions when developing the data of a project. The information depicted on this map represents the results of a survey conducted on the date indicated. It is not intended to represent the general condition existing at that time.

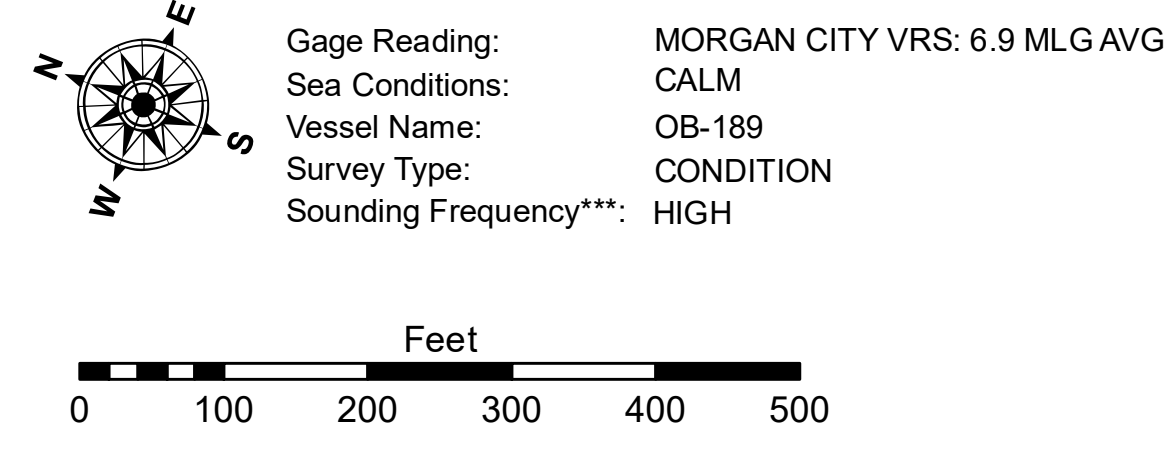
Submitted:	Surveyed By: RYLAND/HOSHMAN
Recommended: Chief Survey Section	Plotted By: BD
Approved: Chief Waterways Maintenance Section	Checked By: AC

**ATCHAFALAYA RIVER
 BERWICK LOCK FOREBAY
 AS_00_BLF_20200611_CS_POSTSTORM
 11 June 2020**



LEGEND

--- Federal Navigation Channel	○ Cable Area	□ Borrow Area	■ -12' and above
— Federal Navigation Center Line	□ Placement Area	● Shoalest Sounding**	□ -12' and below
— As-built Pipeline/Cable	□ Anchorage Area	★ Beacon, General	
..... Unconfirmed Pipeline/Cable	⊗ Obstruction Point	◆ Red Navigation Buoy	
— Project Depth Contour	⚓ Wrecks-Submerged	◆ Green Navigation Buoy	



**Sheet
 Reference
 Number
 1 of 1**