

NOTES:

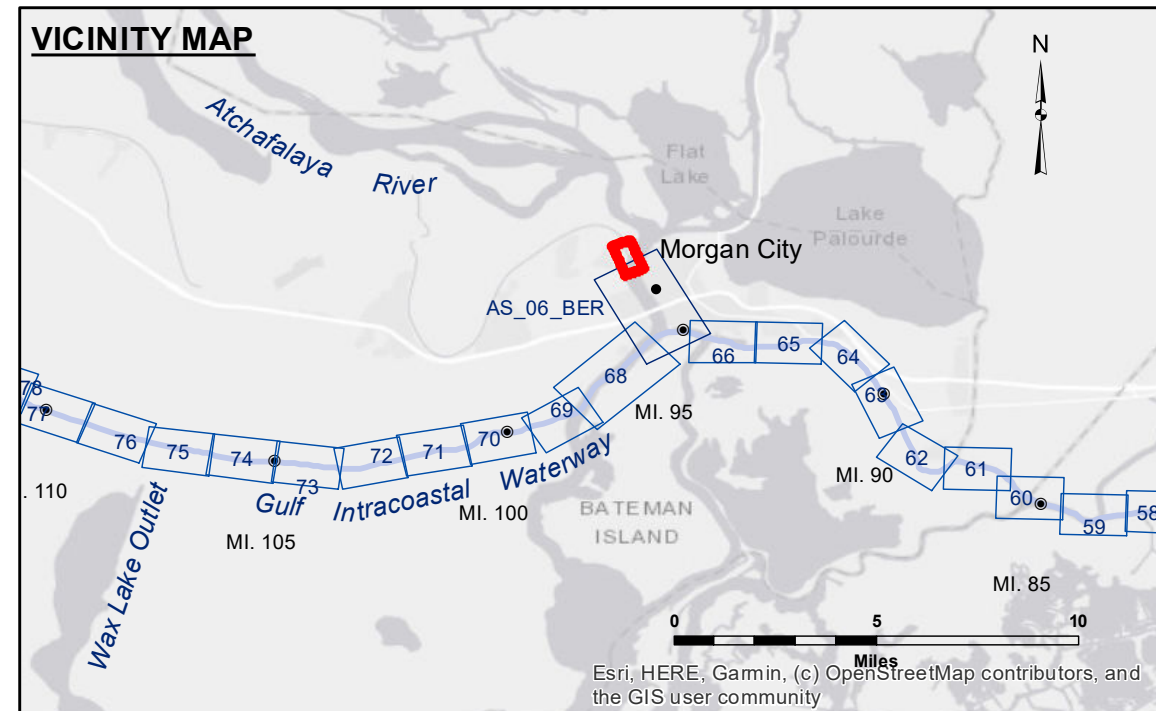
1. At the direction of the Contracting Officer, all dredged material shall be disposed beyond the -32 foot MLG contour of Atchafalaya River or into commercial borrow pits.

2. Actual authorized dimensions vary. Dredging assignments detailing the ac

TABLE OF COORDINATES

① x=3315461.2 y=443192.84	④ x=3316249.1 y=441024.9
② x=3315543.64 y=442988.26	⑤ x=3316125.6 y=440150.7
③ x=3316217.7 y=441278.04	

VERTEX
X=3,315,754.0
Y= 441,094.9
R= 500'
DELTA= 29 35'59"



LEGEND

--- Federal Navigation Channel	○ Cable Area	□ Borrow Area	■ -12' and above
— Federal Navigation Center Line	□ Placement Area	● Shoalest Sounding**	□ -12' and below
— As-built Pipeline/Cable	□ Anchorage Area	★ Beacon, General	
..... Unconfirmed Pipeline/Cable	⊗ Obstruction Point	◆ Red Navigation Buoy	
— Project Depth Contour	⚓ Wrecks-Submerged	◆ Green Navigation Buoy	

Gage Reading: BEWICK LOCK FB: 3.24 MLG
 Sea Conditions: CALM
 Vessel Name: OB-189
 Survey Type: CONDITION
 Sounding Frequency***: HIGH

NOTES:
Horizontal Coordinate System:
North American Datum of 1983 (NAD83), projected to the State Plane Coordinate System (SPCS), Louisiana South Zone. Distance units in U.S. Survey Feet.

Vertical Datum:
Soundings are shown in feet and indicate depths below Mean Low Gulf Datum (MLG). Datum Relationships for Lower Atchafalaya River at Morgan City (03780) as of May 2014: 0.0' NAVD88 (2009.55) = 2.05' MLG

The location of navigation aids are base on and provided by the U.S. Coast Guard.

2015 Aerial Photography data source: NAIP.

Reference is N.O.A.A. Navigation Chart No. 11355.

** Shoalest Sounding per Quarter per Reach.

*** High frequency (200 kHz) survey data represents the first signal return at a sounding location and will include suspended solids, known as "fluff", if present. Low frequency (20 kHz) survey data normally penetrates through this "fluff" layer to depict elevations of consolidated bottom material. Low frequency accuracies may vary depending on channel conditions and fathometer settings.



DISCLAIMER:
The data represents the results of data collection for a specific project. The user is responsible for the use, interpretation, and accuracy of the data. The user is responsible for the results of the data. The user is responsible for the results of the data. The user is responsible for the results of the data.

U.S. ARMY CORPS OF ENGINEERS NEW ORLEANS DISTRICT		
Submitted:	Surveyed By: SP/JA	Plotted By: BD
Recommended:	Checked By: AD/JH	Checked By: AD/JH
Approved:	Other Waterways Maintenance Section	

**ATCHAFALAYA RIVER
BERWICK LOCK FOREBAY
AS_00_BLF_20221115_CS
15 November 2022**

**Sheet
Reference
Number
1 of 1**