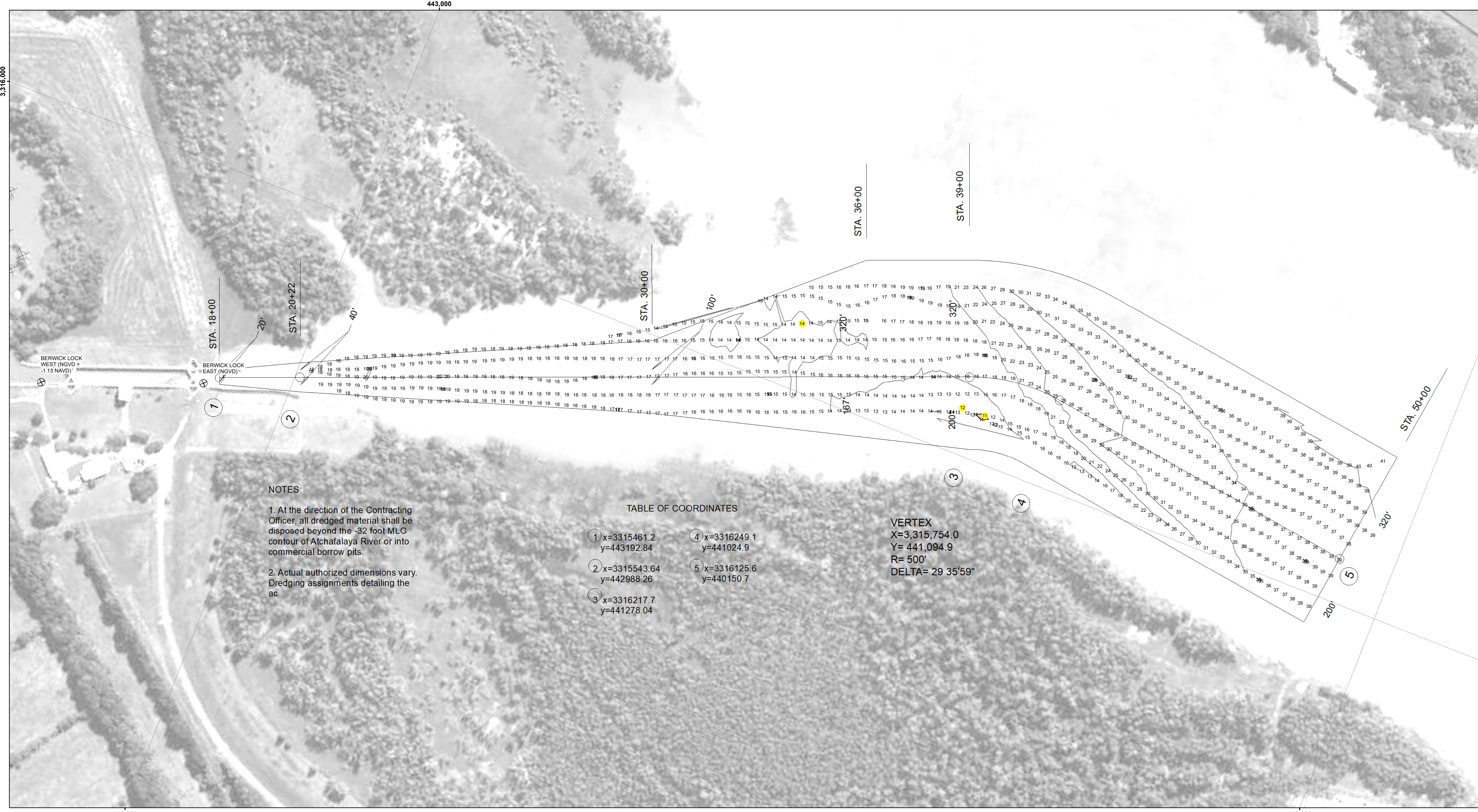




DISCLAIMER: The United States Government furnishes these data and the recipient accepts and uses them with the express understanding that the data are not to be used for any purpose other than that for which they were originally prepared, and that the user is responsible for the results obtained therefrom. The user is responsible for the results obtained therefrom. The user is responsible for the results obtained therefrom. The user is responsible for the results obtained therefrom.

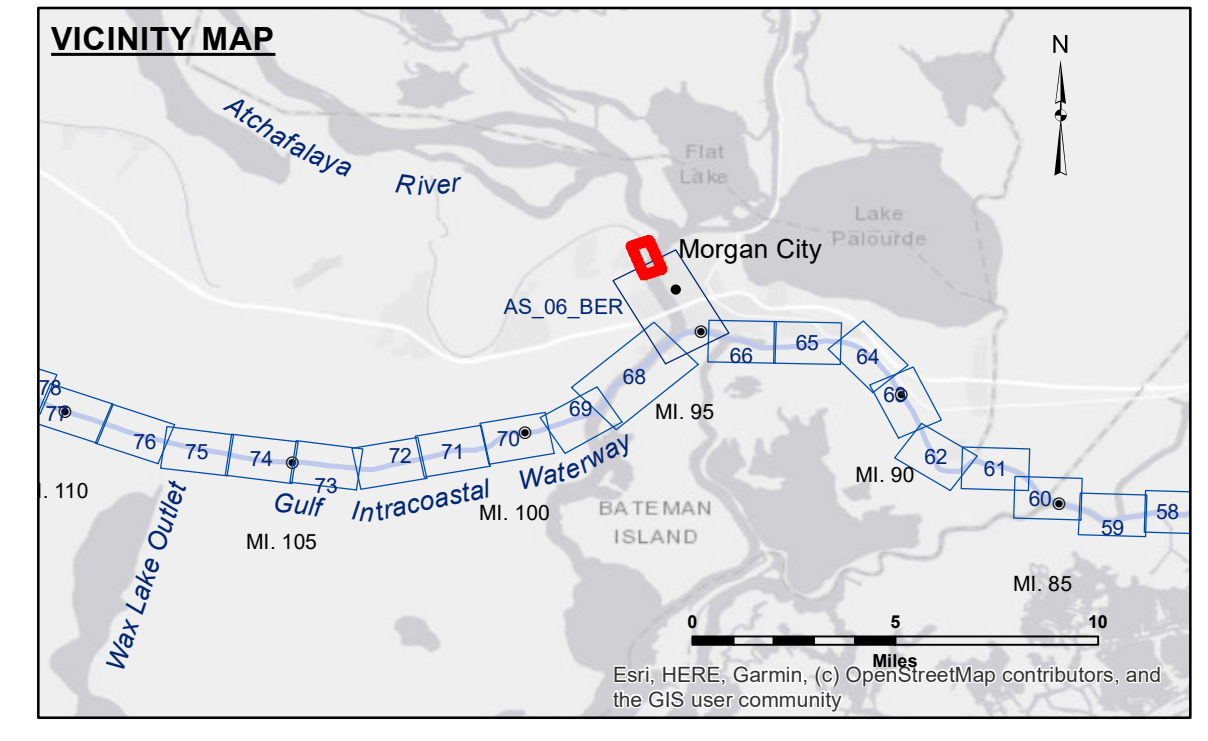


NOTES:
 1. At the direction of the Contracting Officer, all dredged material shall be disposed beyond the -32 foot MLG contour of Atchafalaya River or into commercial borrow pits.
 2. Actual authorized dimensions vary. Dredging assignments detailing the ac

TABLE OF COORDINATES

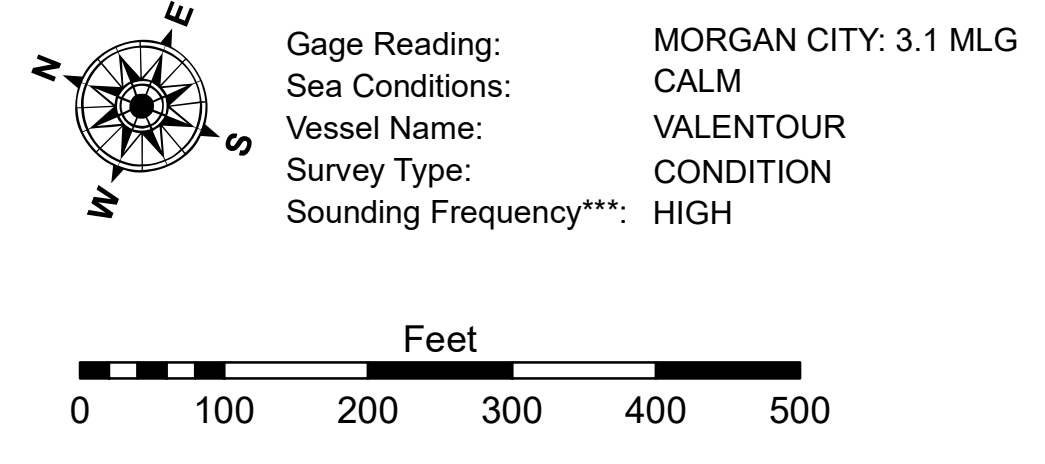
| | |
|-------------------------------|-----------------------------|
| ① x=3315461.2 y=443192.84 | ④ x=3316249.1 y=441024.9 |
| ② x=3315543.64 y=442988.26 | ⑤ x=3316125.6 y=440150.7 |
| ③ x=3316217.7 y=441278.04 | |

VERTEX
 X=3,315,754.0
 Y= 441,094.9
 R= 500'
 DELTA= 29 35'59"



LEGEND

| | | | |
|----------------------------------|---------------------|-------------------------|------------------|
| --- Federal Navigation Channel | ○ Cable Area | □ Borrow Area | ■ -12' and above |
| — Federal Navigation Center Line | □ Placement Area | ● Shoalest Sounding** | □ -12' and below |
| — As-built Pipeline/Cable | □ Anchorage Area | ★ Beacon, General | |
| Unconfirmed Pipeline/Cable | ⊗ Obstruction Point | ◆ Red Navigation Buoy | |
| — Project Depth Contour | ⚓ Wrecks-Submerged | ◆ Green Navigation Buoy | |



NOTES:
 Horizontal Coordinate System: North American Datum of 1983 (NAD83), projected to the State Plane Coordinate System (SPCS), Louisiana South Zone. Distance units in U.S. Survey Feet.
 Vertical Datum: Soundings are shown in feet and indicate depths below Mean Low Gulf Datum (MLG). Datum Relationships for Lower Atchafalaya River at Morgan City (03780) as of May 2014: 0.0' NAVD88 (2009.55) = 2.05' MLG
 The location of navigation aids are base on and provided by the U.S. Coast Guard.
 2015 Aerial Photography data source: NAIP.
 Reference is N.O.A.A. Navigation Chart No. 11355.
 ** Shoalest Sounding per Quarter per Reach.
 *** High frequency (200 kHz) survey data represents the first signal return at a sounding location and will include suspended solids, known as "fluff", if present. Low frequency (20 kHz) survey data normally penetrates through this "fluff" layer to depict elevations of consolidated bottom material. Low frequency accuracies may vary depending on channel conditions and fathometer settings.

**U.S. ARMY CORPS OF ENGINEERS
 NEW ORLEANS DISTRICT**

| | |
|---|-----------------------------|
| Submitted: | Surveyed By: ADAMS/CHAMPINE |
| Recommended: Chief Survey Section | Plotted By: JH |
| Approved: Chief Waterways Maintenance Section | Checked By: JH |

**ATCHAFALAYA RIVER
 BERWICK LOCK FOREBAY
 AS_00_BLF_20230929_CS
 29 September 2023**

**Sheet
 Reference
 Number
 1 of 1**