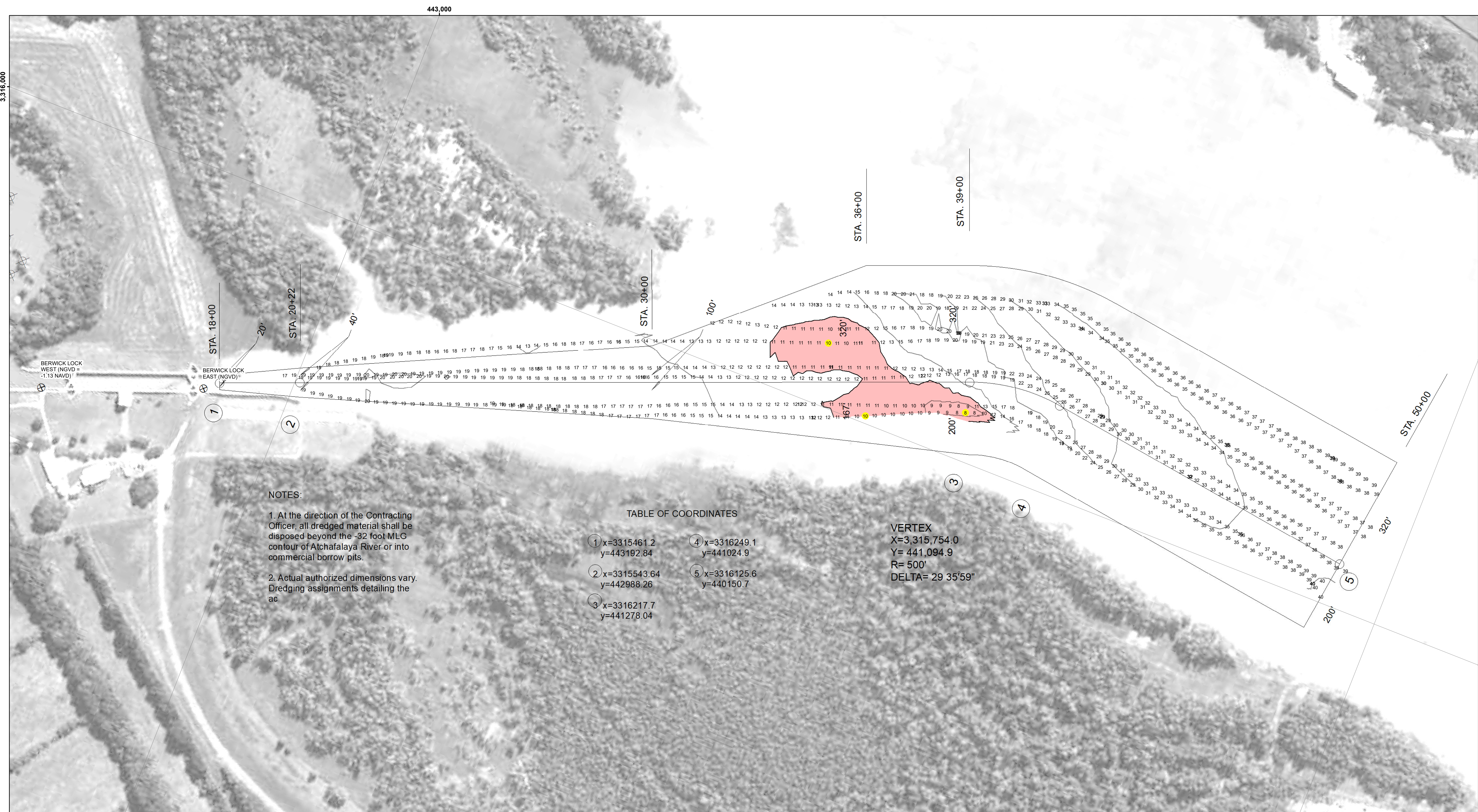




DISCLAIMER
 The information depicted on this map represents the results of a survey conducted for a specific project and is not intended for general use. The user is responsible for the accuracy, completeness, and reliability of the data for their intended purpose. The Corps of Engineers does not accept any responsibility for changes in the hydrographic conditions which develop after the date of the survey. The Corps of Engineers does not accept any responsibility for changes in the hydrographic conditions which develop after the date of the survey. The Corps of Engineers does not accept any responsibility for changes in the hydrographic conditions which develop after the date of the survey.

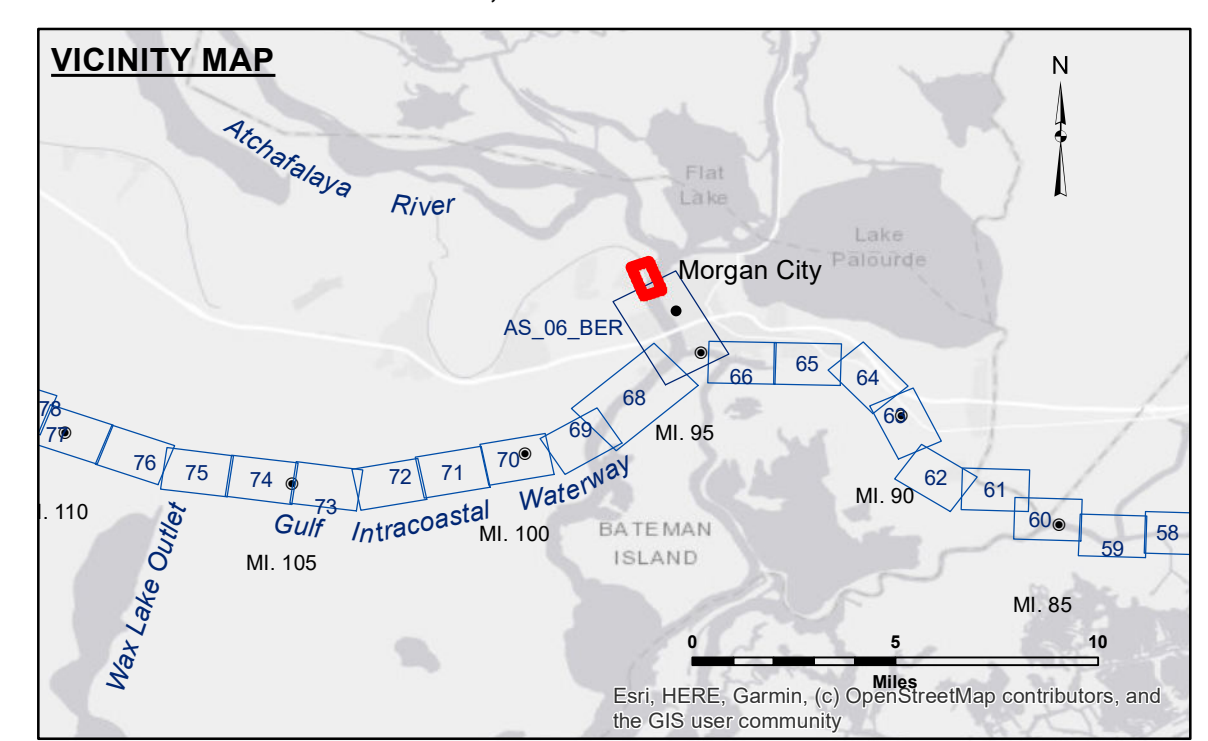


NOTES:
 1. At the direction of the Contracting Officer, all dredged material shall be disposed beyond the -32 foot MLG contour of Atchafalaya River or into commercial borrow pits.
 2. Actual authorized dimensions vary. Dredging assignments detailing the ac

TABLE OF COORDINATES

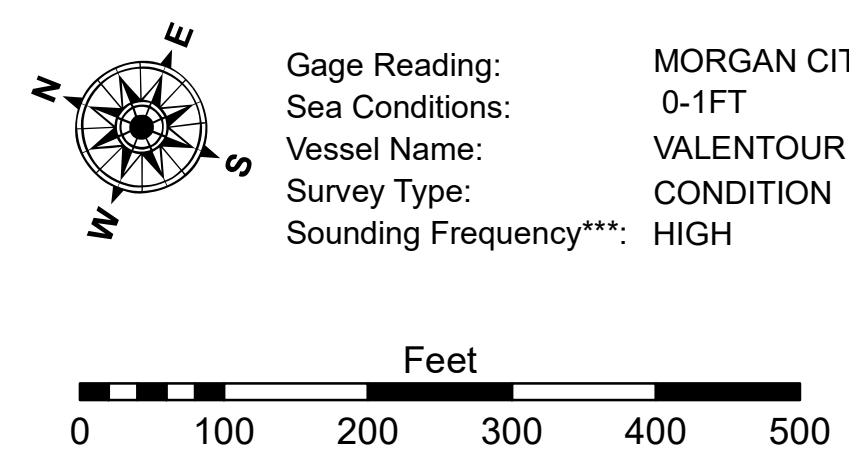
1	x=3315461.2 y=443192.84	4	x=3316249.1 y=441024.9
2	x=3315543.64 y=442988.26	5	x=3316125.6 y=440150.7
3	x=3316217.7 y=441278.04		

VERTEX
 X=3,315,754.0
 Y= 441,094.9
 R= 500'
 DELTA= 29 35'59"



LEGEND

--- Federal Navigation Channel	○ Cable Area	□ Borrow Area	■ -12' and above
— Federal Navigation Center Line	□ Placement Area	● Shoalest Sounding**	□ -12' and below
— As-built Pipeline/Cable	□ Anchorage Area	★ Beacon, General	
..... Unconfirmed Pipeline/Cable	⊗ Obstruction Point	◆ Red Navigation Buoy	
— Project Depth Contour	⚓ Wrecks-Submerged	◆ Green Navigation Buoy	



Gage Reading: MORGAN CITY: 3.26 MLG AVG
 Sea Conditions: 0-1FT
 Vessel Name: VALENTOUR
 Survey Type: CONDITION
 Sounding Frequency***: HIGH

NOTES:
 Horizontal Coordinate System:
 North American Datum of 1983 (NAD83), projected to the State Plane Coordinate System (SPCS), Louisiana South Zone. Distance units in U.S. Survey Feet.
 Vertical Datum:
 Soundings are shown in feet and indicate depths below Mean Low Gulf Datum (MLG). Datum Relationships for Lower Atchafalaya River at Morgan City (03780) as of May 2014: 0.0' NAVD88 (2009.55) = 2.05' MLG
 The location of navigation aids are base on and provided by the U.S. Coast Guard.
 Reference is N.O.A.A. Navigation Chart No. 11355.
 2015 Aerial Photography data source: NAIP.
 *** Shoalest Sounding per Quarter per Reach.
 **** High frequency (200 kHz) survey data represents the first signal return at a sounding location and will include suspended solids, known as "fluff", if present. Low frequency (20 kHz) survey data normally penetrates through this "fluff" layer to depict elevations of consolidated bottom material. Low frequency accuracies may vary depending on channel conditions and fathometer settings.

**U.S. ARMY CORPS OF ENGINEERS
 NEW ORLEANS DISTRICT**

Submitted:	Surveyed By: ADAMS/CHAMPINE
Recommended:	Plotted By: JH
Approved:	Checked By: JH

**ATCHAFALAYA RIVER
 BERWICK LOCK FOREBAY
 AS_00_BLF_20241025_CS
 25 October 2024**

**Sheet
 Reference
 Number
 1 of 1**