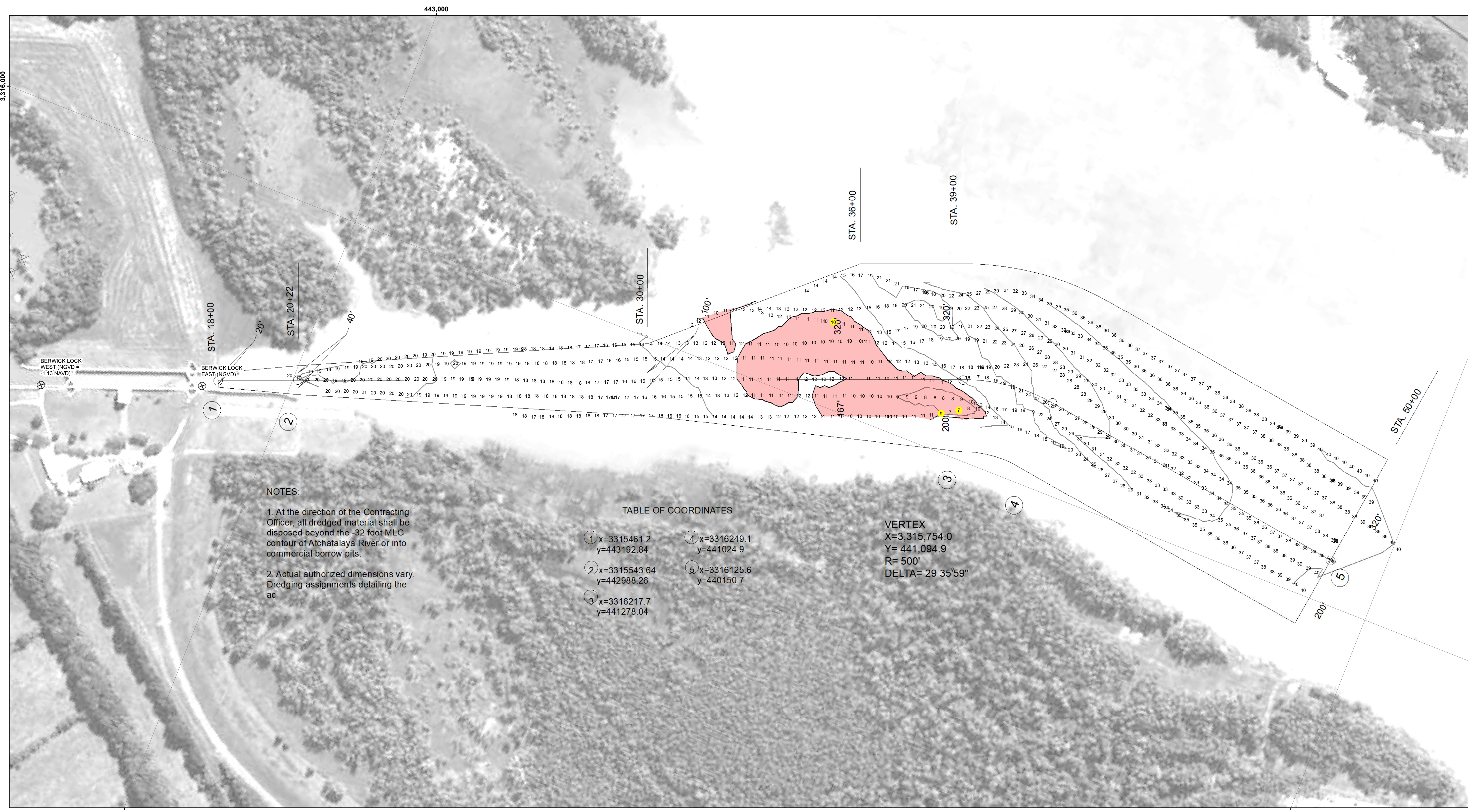


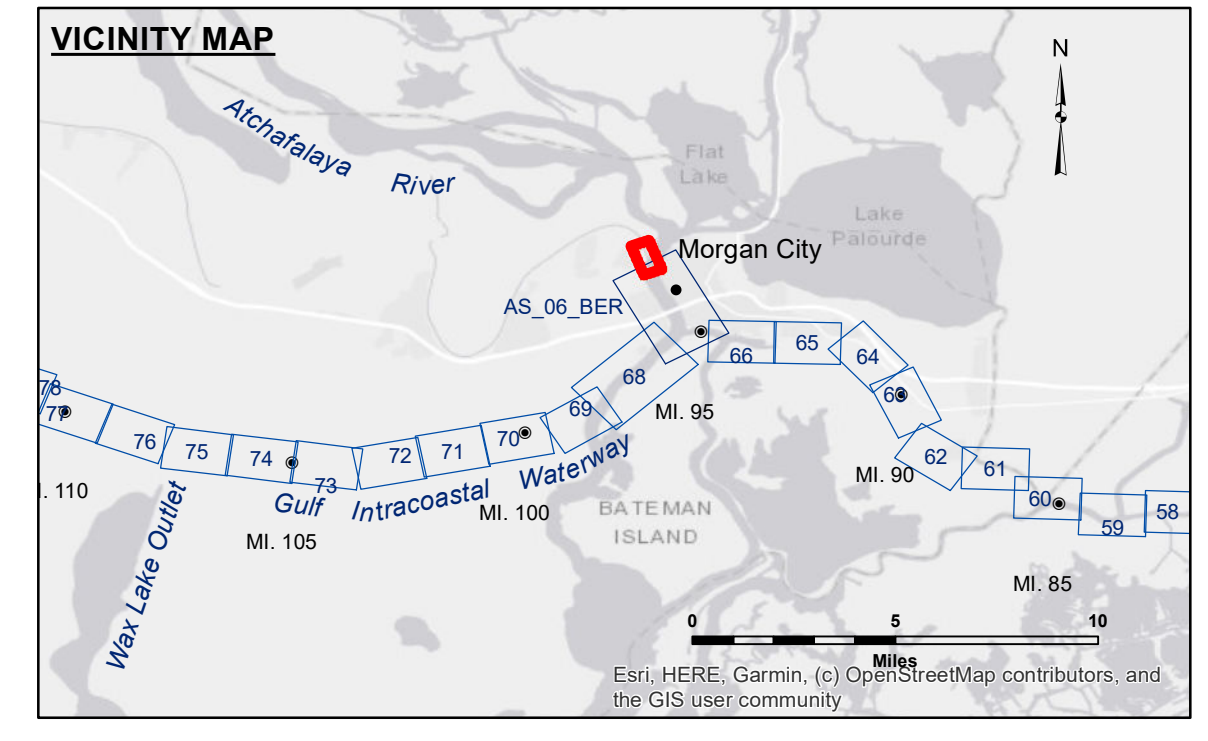


**DISCLAIMER**  
The information depicted on this map represents the results of a survey conducted for a specific purpose and is not intended for any other use. The user is responsible for the accuracy, completeness, and reliability of the information for any particular purpose of the user. The user is responsible for the accuracy, completeness, and reliability of the information for any particular purpose of the user. The user is responsible for the accuracy, completeness, and reliability of the information for any particular purpose of the user.



Submitted:	Surveyed By: ADAMS/CHAMPINE
Recommended:	Plotted By: JH
Approved:	Checked By: JH

U.S. ARMY CORPS OF ENGINEERS  
NEW ORLEANS DISTRICT



**LEGEND**

--- Federal Navigation Channel	○ Cable Area	□ Borrow Area	■ -12' and above
— Federal Navigation Center Line	□ Placement Area	● Shoalest Sounding**	□ -12' and below
— As-built Pipeline/Cable	□ Anchorage Area	★ Beacon, General	
..... Unconfirmed Pipeline/Cable	⊗ Obstruction Point	◆ Red Navigation Buoy	
— Project Depth Contour	⚓ Wrecks-Submerged	◆ Green Navigation Buoy	

**Gage Reading:** MORGAN CITY: 3.40 MLG AVG  
**Sea Conditions:** 0-1FT  
**Vessel Name:** VALENTOUR  
**Survey Type:** CONDITION  
**Sounding Frequency\*\*\*:** HIGH

**Vertical Datum:**  
Soundings are shown in feet and indicate depths below Mean Low Gulf Datum (MLG).  
Datum Relationships for Lower Atchafalaya River at Morgan City (03780) as of May 2014:  
0.0' NAVD88 (2009.55) = 2.05' MLG

The location of navigation aids are base on and provided by the U.S. Coast Guard.  
Reference is N.O.A.A. Navigation Chart No. 11355.  
2015 Aerial Photography data source: NAIP.  
\*\*\* Shoalest Sounding per Quarter per Reach.

Scale: 0 100 200 300 400 500 Feet

**ATCHAFALAYA RIVER  
BERWICK LOCK FOREBAY  
AS\_00\_BLF\_20250114\_CS  
14 January 2025**

**Sheet  
Reference  
Number  
1 of 1**

Revision Number:  
4.2-20200420