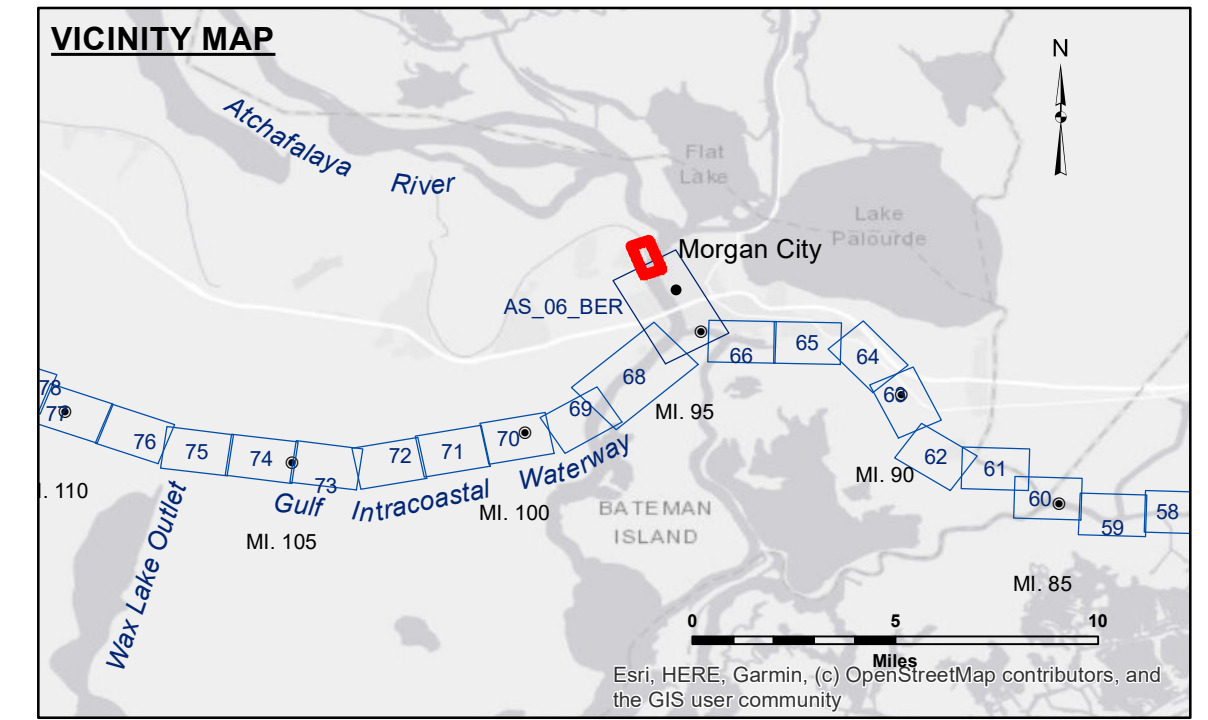


NOTES:

1. At the direction of the Contracting Officer, all dredged material shall be disposed beyond the -32 foot MLG contour of Atchafalaya River or into commercial borrow pits.
2. Actual authorized dimensions vary. Dredging assignments detailing the ac



LEGEND

--- Federal Navigation Channel	○ Cable Area	□ Borrow Area	■ -12' and above
— Federal Navigation Center Line	□ Placement Area	● Shoalest Sounding**	□ -12' and below
— As-built Pipeline/Cable	□ Anchorage Area	★ Beacon, General	
..... Unconfirmed Pipeline/Cable	⊗ Obstruction Point	◆ Red Navigation Buoy	
— Project Depth Contour	⚓ Wrecks-Submerged	◆ Green Navigation Buoy	

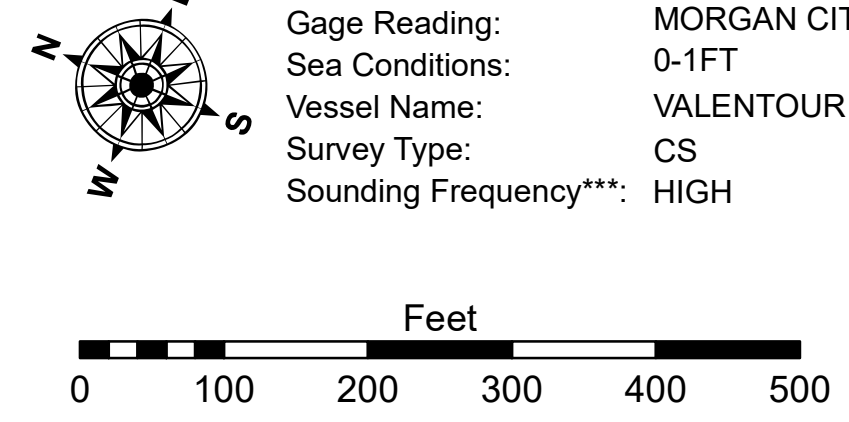
Gage Reading: MORGAN CITY: 5.77 MLG AVG
Sea Conditions: 0-1FT
Vessel Name: VALENTOUR
Survey Type: CS
Sounding Frequency*:** HIGH

Vertical Datum:
 Soundings are shown in feet and indicate depths below Mean Low Gulf Datum (MLG).
 Datum Relationships for Lower Atchafalaya River at Morgan City (03780) as of May 2014:
 0.0' NAVD88 (2009.55) = 2.05' MLG

The location of navigation aids are base on and provided by the U.S. Coast Guard.
 Reference is N.O.A.A. Navigation Chart No. 11355.

2015 Aerial Photography data source: NAIP.
 *** Shoalest Sounding per Quarter per Reach.

**** High frequency (200 kHz) survey data represents the first signal return at a sounding location and will include suspended solids, known as "fluff", if present. Low frequency (20 kHz) survey data normally penetrates through this "fluff" layer to depict elevations of consolidated bottom material. Low frequency accuracies may vary depending on channel conditions and fathometer settings.



DISCLAIMER:
 The information depicted on this map represents the results of a survey conducted by the U.S. Army Corps of Engineers. It is not intended to be used for any purpose other than that for which it was prepared. The user is responsible for the results of any use of this information. The U.S. Army Corps of Engineers does not assume any liability for damages or losses resulting from the use of this information. The information depicted on this map represents the results of a survey conducted by the U.S. Army Corps of Engineers. It is not intended to be used for any purpose other than that for which it was prepared. The user is responsible for the results of any use of this information. The U.S. Army Corps of Engineers does not assume any liability for damages or losses resulting from the use of this information.

U.S. ARMY CORPS OF ENGINEERS
 NEW ORLEANS DISTRICT

Submitted:	Surveyed By: ADAMS/CHAMPINE
Recommended: Chief Survey Section	Plotted By: JH
Approved: Chief Waterways Maintenance Section	Checked By: JH

ATCHAFALAYA RIVER
BERWICK LOCK FOREBAY
AS_00_BLF_20250305_CS
05 March 2025

Sheet Reference Number
1 of 1

Revision Number:
 4.2-20200420