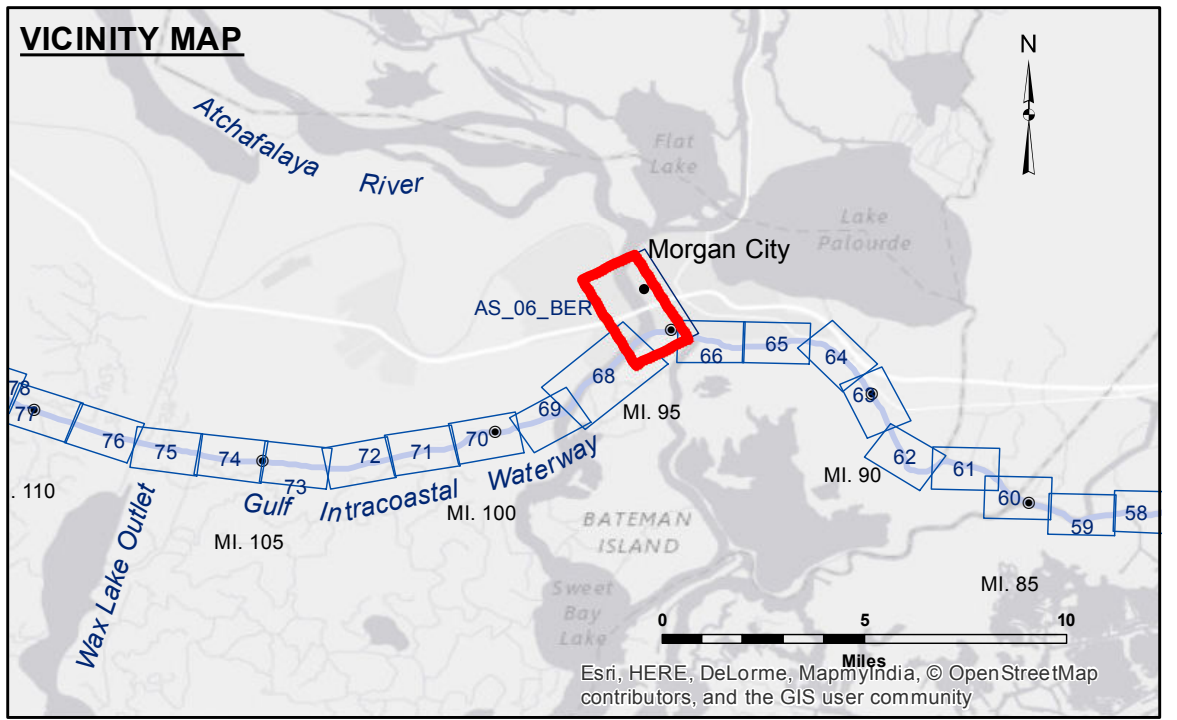


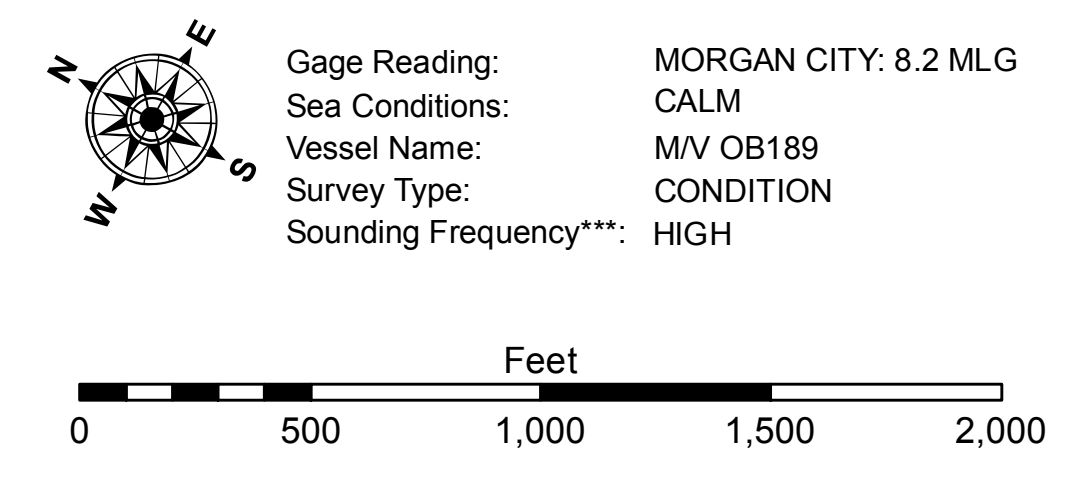
Access to Information: This information is available to the public. The information is provided for informational purposes only. It is not intended for use in any legal proceeding. The user is responsible for the results of any use of this information. The information is provided as is, without warranty of any kind. The information is provided for informational purposes only. It is not intended for use in any legal proceeding. The user is responsible for the results of any use of this information. The information is provided as is, without warranty of any kind.

U.S. ARMY CORPS OF ENGINEERS NEW ORLEANS DISTRICT		
Submitted:	Surveyed By: RYLAND ADAMS	Plotted By: AO
Recommended:	Chief, Survey Section	Checked By: AN
Approved:	Chief, Waterways Maintenance Section	

**ATCHAFALAYA RIVER
BERWICK HARBOR
AS_06_BER_20160129
29 January 2016**



LEGEND			
--- Federal Navigation Channel	○ Cable Area	□ Borrow Area	■ -12' and above
— Federal Navigation Center Line	□ Placement Area	● Shoalest Sounding**	□ -12' and below
— As-built Pipeline/Cable	□ Anchorage Area	★ Beacon, General	
..... Unconfirmed Pipeline/Cable	⊗ Obstruction Point	◆ Red Navigation Buoy	
— Project Depth Contour	⚓ Wrecks-Submerged	◆ Green Navigation Buoy	



NOTES: Coordinate System: North American Datum of 1983 (NAD83), projected to the State Plane Coordinate System (SPCS), Louisiana South Zone. Distance units in U.S. Survey Feet.
Vertical Datum: Soundings are shown in feet and indicate depths below Mean Low Gulf Datum (MLG). Datum Relationships for Lower Atchafalaya River at Morgan City (03780) as of May 2014: 0.0' NAVD88 (2009.55) = 2.05' MLG.
The location of navigation aids are base on and provided by the U.S. Coast Guard.
Reference is N.O.A. Navigation Chart No. 11355.
** Shoalest Sounding per Quarter per Reach.
*** High frequency (200 kHz) survey data represents the first signal return at a sounding location and will include suspended solids, known as "fluff", if present. Low frequency (20 kHz) survey data normally penetrates through this "fluff" layer to depict elevations of consolidated bottom material. Low frequency accuracies may vary depending on channel conditions and fathometer settings.