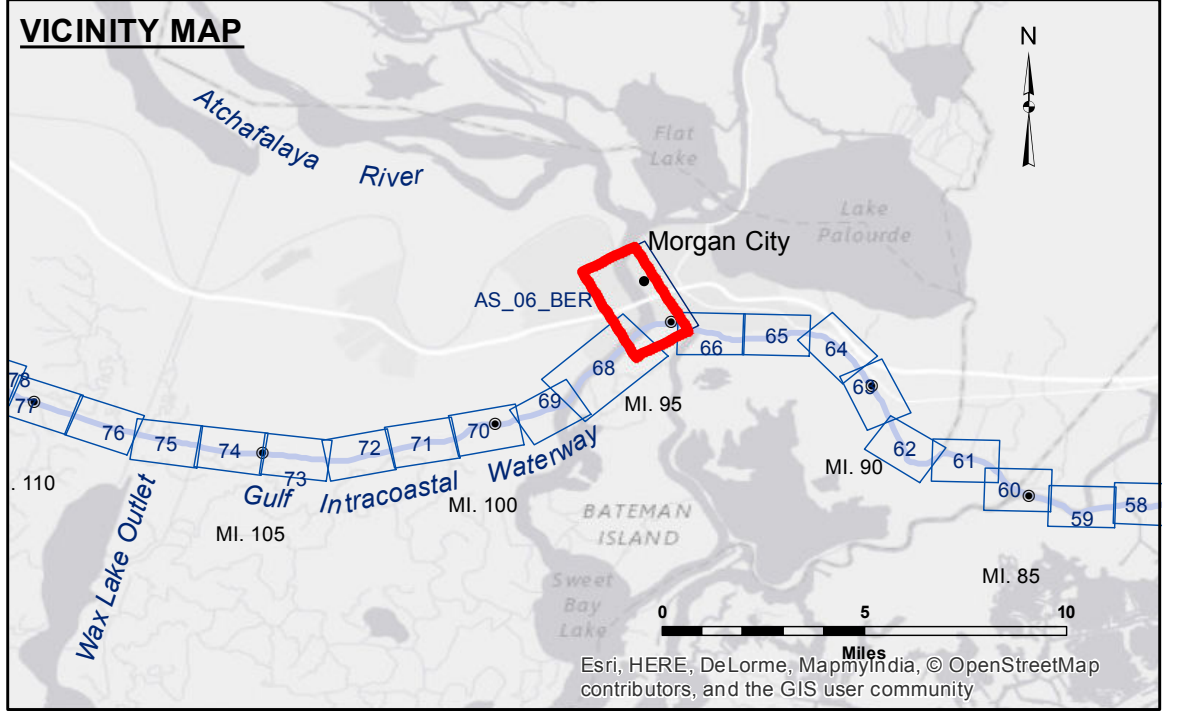
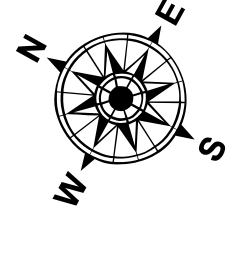


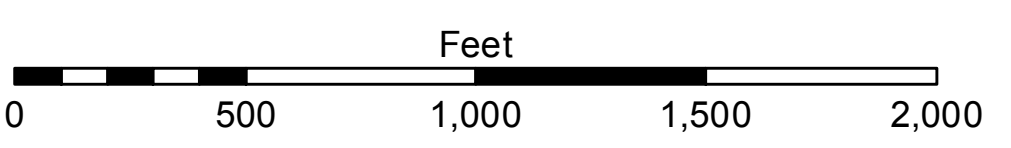
Vertical Datum: North American Datum of 1983 (NAD83), projected to the State Plane Coordinate System (SPCS), Louisiana South Zone. Distance units in U.S. Survey Feet. Soundings are shown in feet and indicate depths below Mean Low Gulf Datum (MLG). Datum Relationships for Lower Atchafalaya River at Morgan City (03780) as of May 2014: 0.0' NAVD88 (2009.55) = 2.05' MLG



LEGEND table with symbols for Federal Navigation Channel, Cable Area, Borrow Area, Shoalest Sounding, Beacons, Buoy types, Pipeline types, Obstruction Points, Wrecks, and Depth Contours.



Gage Reading: MORGAN CITY: 5.05 MLG
Sea Conditions: CALM
Vessel Name: OB-189
Survey Type: CONDITION
Sounding Frequency\*\*\*: HIGH



Coordinate System: North American Datum of 1983 (NAD83), projected to the State Plane Coordinate System (SPCS), Louisiana South Zone. Distance units in U.S. Survey Feet. Soundings are shown in feet and indicate depths below Mean Low Gulf Datum (MLG). Datum Relationships for Lower Atchafalaya River at Morgan City (03780) as of May 2014: 0.0' NAVD88 (2009.55) = 2.05' MLG

The location of navigation aids are base on and provided by the U.S. Coast Guard. Reference is N.O.A.A. Navigation Chart No. 11355.

\*\*\* Shoalest Sounding per Quarter per Reach. \*\*\*\* High frequency (200 kHz) survey data represents the first signal return at a sounding location and will include suspended solids, known as "fluff", if present. Low frequency (20 kHz) survey data normally penetrates through this "fluff" layer to depict elevations of consolidated bottom material. Low frequency accuracies may vary depending on channel conditions and fathometer settings.

Approval table with columns for Submitted, Recommended, and Approved, along with names like RYLAND SIMMONS and titles like Chief Survey Section.

ATCHAFALAYA RIVER
BERWICK HARBOR
AS\_06\_BER\_20160302
02 March 2016

Sheet
Reference
Number
6 of 66