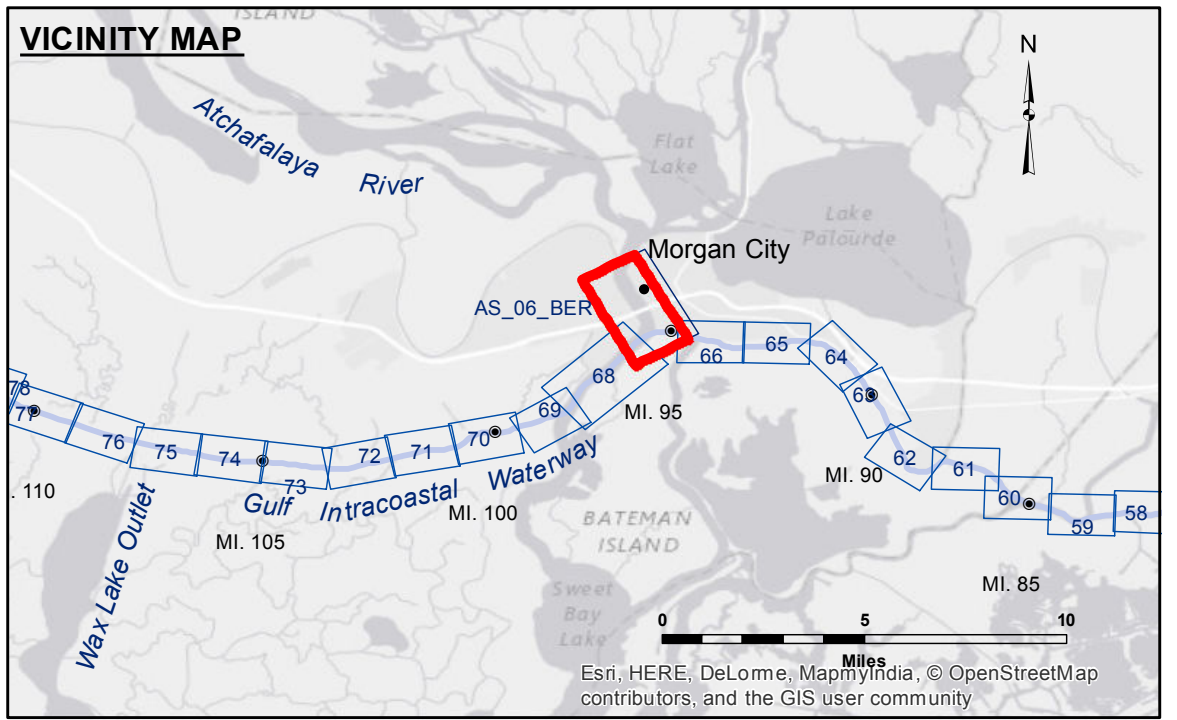


Access to Data: The data represented on this map is the result of data collection for a specific project. The data is not intended for use in any other project. The user is responsible for the accuracy, completeness, and reliability of the data. The user is responsible for the accuracy, completeness, and reliability of the data. The user is responsible for the accuracy, completeness, and reliability of the data.

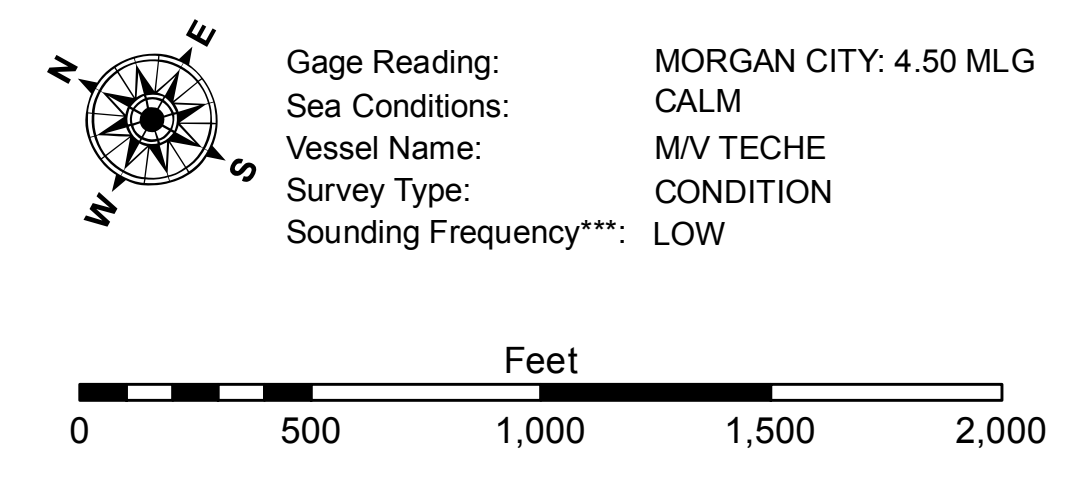
U.S. ARMY CORPS OF ENGINEERS NEW ORLEANS DISTRICT		
Submitted:	Surveyed By: SR, DR	Plotted By: BTD
Recommended: Chief Survey Section	Checked By: AC	Approved: Chief Waterways Maintenance Section

**ATCHAFALAYA RIVER
BERWICK HARBOR
AS_06_BER_20160816
16 August 2016**



LEGEND

--- Federal Navigation Channel	○ Cable Area	□ Borrow Area	■ -12' and above
— Federal Navigation Center Line	□ Placement Area	● Shoalest Sounding**	□ -12' and below
— As-built Pipeline/Cable	□ Anchorage Area	★ Beacon, General	
..... Unconfirmed Pipeline/Cable	⊗ Obstruction Point	◆ Red Navigation Buoy	
— Project Depth Contour	⚓ Wrecks-Submerged	◆ Green Navigation Buoy	



NOTES: Coordinate System: North American Datum of 1983 (NAD83), projected to the State Plane Coordinate System (SPCS), Louisiana South Zone. Distance units in U.S. Survey Feet.
 Vertical Datum: Soundings are shown in feet and indicate depths below Mean Low Gulf Datum (MLG). Datum Relationships for Lower Atchafalaya River at Morgan City (03780) as of May 2014: 0.0' NAVD88 (2009.55) = 2.05' MLG.
 The location of navigation aids are based on and provided by the U.S. Coast Guard.
 Reference is N.O.A. Navigation Chart No. 11355.
 *** Shoalest Sounding per Quarter per Reach.
 **** High frequency (200 kHz) survey data represents the first signal return at a sounding location and will include suspended solids, known as "fluff", if present. Low frequency (20 kHz) survey data normally penetrates through this "fluff" layer to depict elevations of consolidated bottom material. Low frequency accuracies may vary depending on channel conditions and fathometer settings.

**Sheet
Reference
Number
6 of 66**