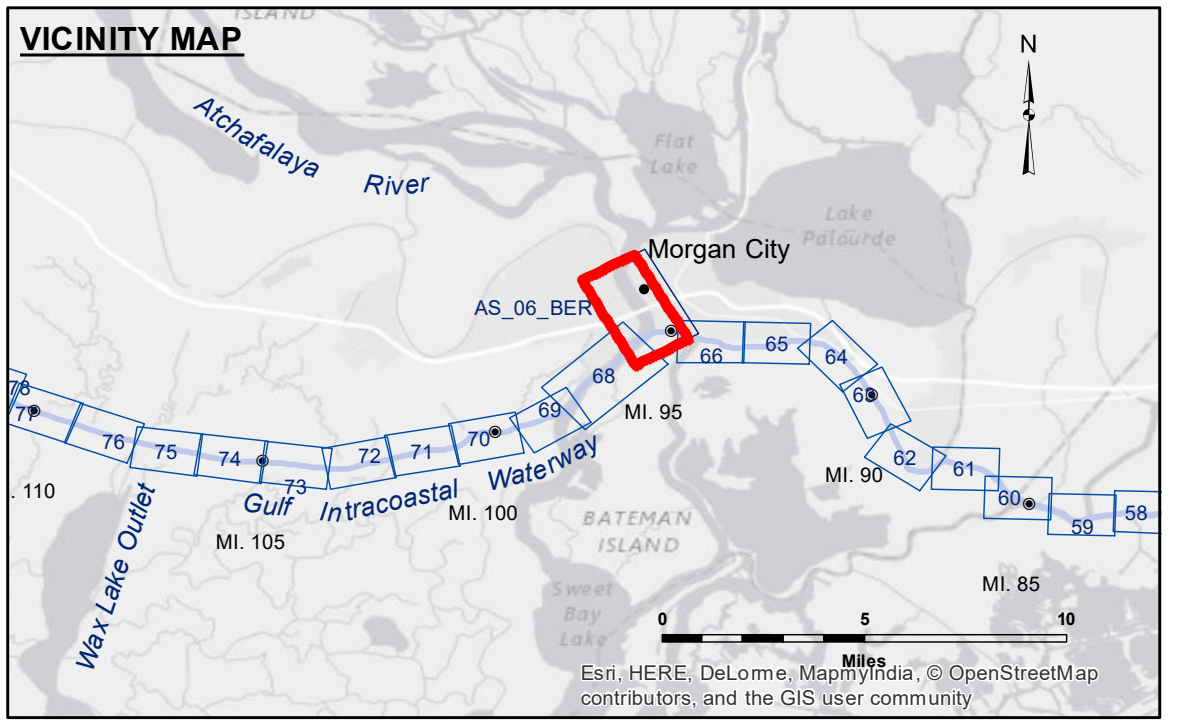


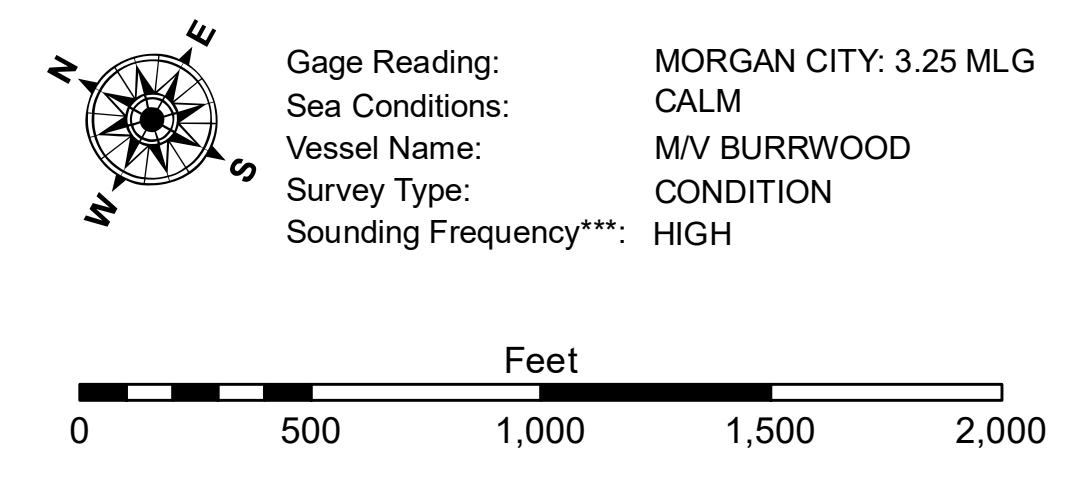
DISCLAIMER: The United States Government furnishes these data and the recipient accepts and uses them with the express understanding that the United States Government makes no warranty, express or implied, concerning the accuracy, completeness, reliability, usability or suitability for any particular purpose of the information. The user is responsible for the results of the application of the data for other than its intended purpose. Data Contaminants: Hydrographic survey data is subject to change due to several factors including but not limited to dredging, accretion, and other changes in the channel. The user is responsible for the accuracy of the data. The information depicted on this map represents the results of a survey conducted on the date of the survey. The user is responsible for the accuracy of the information. The user is responsible for the accuracy of the information. The user is responsible for the accuracy of the information.

| | | |
|--|--|-------------------|
| U.S. ARMY CORPS OF ENGINEERS NEW ORLEANS DISTRICT | | |
| Submitted: | Surveyed By: RYLAND/ADAMS | Plotted By: BD |
| Recommended: | Checked By: AC | Checked By: AC |
| Approved: | Checked: Waterways Maintenance Section | |

**ATCHAFALAYA RIVER
BERWICK HARBOR
AS_06_BER_20171114_CS
14 November 2017**



| LEGEND | | | |
|----------------------------------|---------------------|-------------------------|------------------|
| --- Federal Navigation Channel | ● Cable Area | □ Borrow Area | ■ -12' and above |
| — Federal Navigation Center Line | □ Placement Area | ● Shoalest Sounding** | □ -12' and below |
| — As-built Pipeline/Cable | □ Anchorage Area | ★ Beacon, General | |
| Unconfirmed Pipeline/Cable | ⊗ Obstruction Point | ◆ Red Navigation Buoy | |
| — Project Depth Contour | ★ Wrecks-Submerged | ◆ Green Navigation Buoy | |



NOTES: Coordinate System: North American Datum of 1983 (NAD83), projected to the State Plane Coordinate System (SPCS), Louisiana South Zone. Distance units in U.S. Survey Feet.
Vertical Datum: Soundings are shown in feet and indicate depths below Mean Low Gulf Datum (MLG). Datum Relationships for Lower Atchafalaya River at Morgan City (03780) as of May 2014: 0.0' NAVD88 (2009.55) = 2.05' MLG.
The location of navigation aids are based on and provided by the U.S. Coast Guard.
2010 Aerial Photography data source: NAIP 1998 DOQQ imagery shown in green from USGS.
Reference is N.O.A. Navigation Chart No. 11355.
** Shoalest Sounding per Quarter per Reach.
*** High frequency (200 kHz) survey data represents the first signal return at a sounding location and will include suspended solids, known as "fluff", if present. Low frequency (20 kHz) survey data normally penetrates through this "fluff" layer to depict elevations of consolidated bottom material. Low frequency accuracies may vary depending on channel conditions and fathometer settings.

**Sheet
Reference
Number
6 of 66**