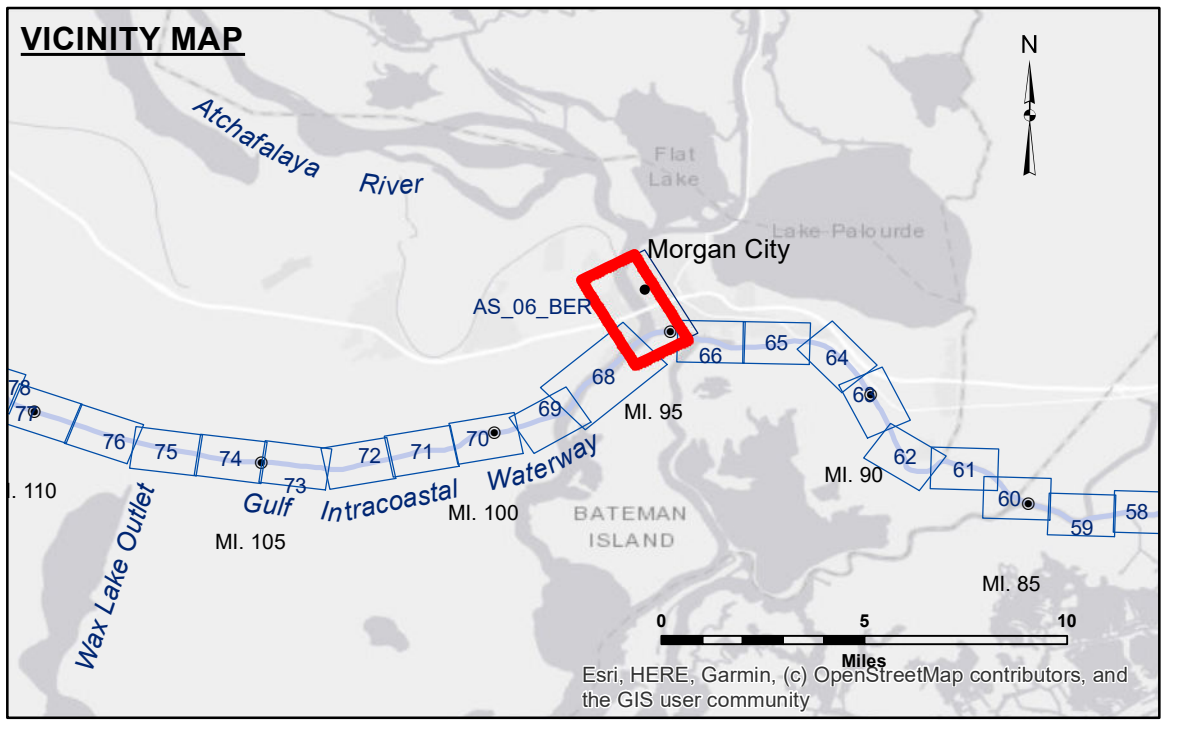


**DISCLAIMER**  
 The United States Government furnishes these data and the recipient accepts and uses them with the express understanding that the data are not to be used for any purpose other than that for which they were prepared, and that the Government makes no warranty, expressed or implied, concerning the accuracy, completeness, or suitability of the data for any particular purpose. The user is responsible for the results of the application of the data for other than its intended purpose.  
 Data Constants Hydrographic survey data is subject to change rapidly due to several factors including but not limited to changing bathymetry, sedimentation, and other factors. The user is responsible for the accuracy of the data used in the project. The user is responsible for the results of the application of the data for other than its intended purpose.  
 The information depicted on this map represents the results of a survey conducted by the U.S. Army Corps of Engineers. The user is responsible for the accuracy of the data used in the project. The user is responsible for the results of the application of the data for other than its intended purpose.

Submitted:	Reviewed:	Approved:
SPDS	AO	AO
U.S. ARMY CORPS OF ENGINEERS NEW ORLEANS DISTRICT		

**ATCHAFALAYA RIVER  
 BERWICK HARBOR  
 AS\_06\_BER\_20200906\_CS\_POSTSTORM  
 06 September 2020**



**LEGEND**

--- Federal Navigation Channel	○ Cable Area	□ Borrow Area	□ -6' and above
— Federal Navigation Center Line	■ Placement Area	● Shoalest Sounding**	■ -6 to -8
— As-built Pipeline/Cable	□ Anchorage Area	★ Beacon, General	■ -8 to -10
..... Unconfirmed Pipeline/Cable	⊗ Obstruction Point	◆ Red Navigation Buoy	■ -10 to -12
— Project Depth Contour	⚓ Wrecks-Submerged	◆ Green Navigation Buoy	■ -12' to -15'
			■ -15' to -18'
			■ -18' to -20'
			■ -20' and below

**NOTES**

Coordinate System:  
 North American Datum of 1983 (NAD83), projected to the State Plane Coordinate System (SPCS), Louisiana South Zone. Distance units in U.S. Survey Feet.

Vertical Datum:  
 Soundings are shown in feet and indicate depths below Mean Low Gulf Datum (MLG). Datum Relationships for Lower Atchafalaya River at Morgan City (03780) as of 2017: 0.0' NAVD88 (2009.55) = 1.89' MLG

The location of navigation aids are based on and provided by the U.S. Coast Guard.  
 Reference is N.O.A. Navigation Chart No. 11355.

\*\* Shoalest Sounding per Quarter per Reach.

\*\*\* High frequency (200 kHz) survey data represents the first signal return at a sounding location and will include suspended solids, known as "fluff", if present. Low frequency (20 kHz) survey data normally penetrates through this "fluff" layer to depict elevations of consolidated bottom material. Low frequency accuracies may vary depending on channel conditions and fathometer settings.

Gage Reading: MC: 3.2 MLG  
 Sea Conditions: CALM  
 Vessel Name: OB-169  
 Survey Type: CONDITION  
 Sounding Frequency\*\*\*: LOW

Feet  
 0 500 1,000 1,500 2,000