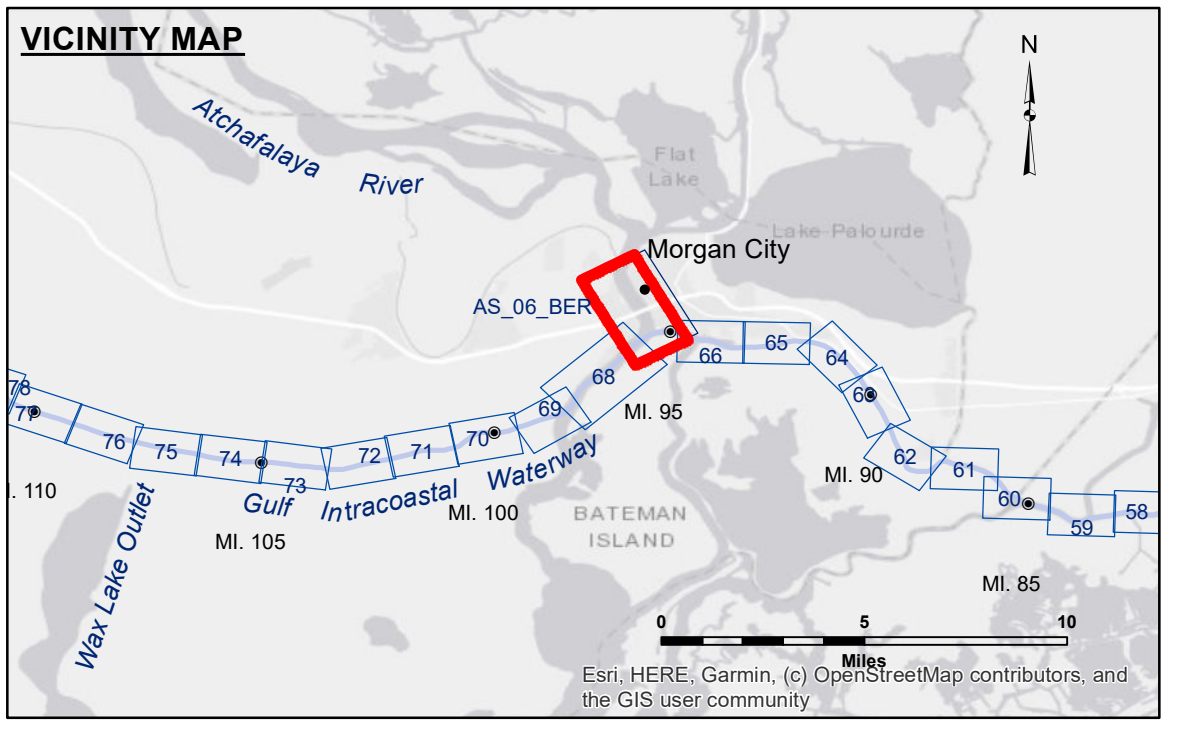


DISCLAIMER
 The United States Government furnishes these data and the recipient accepts and uses them with the express understanding that the data are not to be used for any purpose other than that for which they were prepared, and that the Government makes no warranty, expressed or implied, concerning the accuracy, completeness, reliability, or suitability for any particular purpose of the information furnished. The user is responsible for the results of the application of the data for other than its intended purpose.
 Data Constants Hydrographic survey data is subject to change rapidly due to several factors including but not limited to changing hydrographic conditions. The recipient may not transfer the data to others without the approval of the District Engineer. The information depicted on this map represents the results of a survey conducted on the date shown and is not to be considered as representing the general condition existing at that time.

U.S. ARMY CORPS OF ENGINEERS NEW ORLEANS DISTRICT		
Submitted:	Surveyed By: RYLAND/ADAMS	Plotted By: BD
Recommended:	Chief, Survey Section	Checked By: AC
Approved:	Chief, Waterways Maintenance Section	

**ATCHAFALAYA RIVER
 BERWICK HARBOR
 AS_06_BER_20210513_AD
 13 May 2021**



LEGEND

--- Federal Navigation Channel	○ Cable Area	□ Borrow Area	□ -6' and above
— Federal Navigation Center Line	▭ Placement Area	● Shoalest Sounding**	■ -6 to -8
— As-built Pipeline/Cable	⊗ Anchorage Area	★ Beacon, General	■ -8 to -10
⋯ Unconfirmed Pipeline/Cable	⊗ Obstruction Point	◆ Red Navigation Buoy	■ -10 to -12
— Project Depth Contour	⚓ Wrecks-Submerged	◆ Green Navigation Buoy	■ -12' to -15'
			■ -15' to -18'
			■ -18' to -20'
			■ -20' and below

NOTES

Coordinate System:
 North American Datum of 1983 (NAD83), projected to the State Plane Coordinate System (SPCS), Louisiana South Zone. Distance units in U.S. Survey Feet.

Vertical Datum:
 Soundings are shown in feet and indicate depths below Mean Low Gulf Datum (MLG). Datum Relationships for Lower Atchafalaya River at Morgan City (03780) as of 2017: 0.0' NAVD88 (2009.55) = 1.89' MLG

The location of navigation aids are based on and provided by the U.S. Coast Guard.
 Reference is N.O.A. Navigation Chart No. 11355.

** Shoalest Sounding per Quarter per Reach.

*** High frequency (200 kHz) survey data represents the first signal return at a sounding location and will include suspended solids, known as "fluff", if present. Low frequency (20 kHz) survey data normally penetrates through this "fluff" layer to depict elevations of consolidated bottom material. Low frequency accuracies may vary depending on channel conditions and fathometer settings.

Gage Reading: MORGAN CITY: 5.65 MLG
 Sea Conditions: CALM
 Vessel Name: OB-189
 Survey Type: CONDITION
 Sounding Frequency***: HIGH

Feet
 0 500 1,000 1,500 2,000