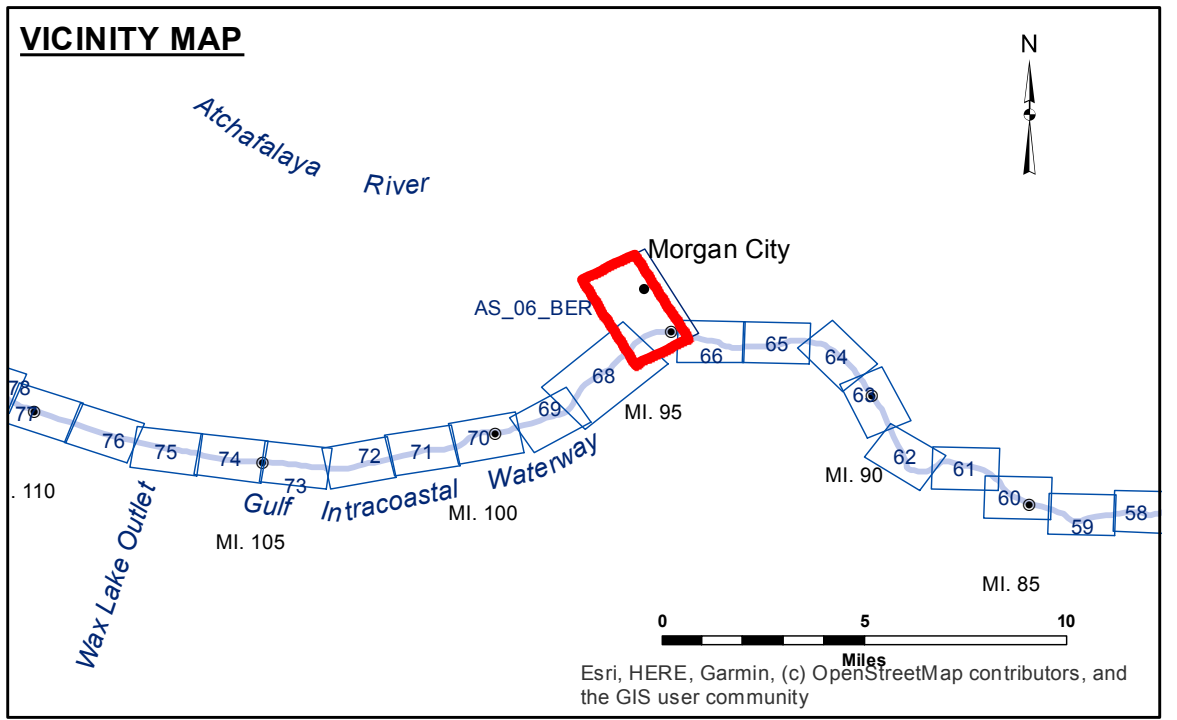


ACCESS LIMITATIONS: The United States Government furnishes these data and the recipient accepts and uses them with the express understanding that they are not to be distributed, reproduced, or used for any purpose other than that for which they were prepared, or implied concerning the accuracy, completeness, reliability, usability, or suitability for any particular purpose of the recipient. The user is responsible for the results. The user shall indemnify, defend, and hold the United States Government harmless from and against all claims, damages, and expenses, including reasonable attorneys' fees, that may be incurred by the United States Government as a result of the recipient's use of these data. The information depicted on this map represents the results of a survey conducted on the ground and is not to be used for any purpose other than that for which it was prepared. The user shall indemnify, defend, and hold the United States Government harmless from and against all claims, damages, and expenses, including reasonable attorneys' fees, that may be incurred by the United States Government as a result of the recipient's use of these data.

U.S. ARMY CORPS OF ENGINEERS NEW ORLEANS DISTRICT	
Submitted:	Surveyed By: DS/SPS
Recommended: Chief, Survey Section	Plotted By: BD
Approved: Chief, Waterways Maintenance Section	Checked By: AC

**ATCHAFALAYA RIVER
BERWICK HARBOR
AS_06_BER_20210930_CS
30 September 2021**



LEGEND

--- Federal Navigation Channel	○ Cable Area	□ Borrow Area	□ -6' and above
— Federal Navigation Center Line	■ Placement Area	● Shoalest Sounding**	■ -6 to -8
— As-built Pipeline/Cable	□ Anchorage Area	★ Beacon, General	■ -8 to -10
..... Unconfirmed Pipeline/Cable	⊗ Obstruction Point	◆ Red Navigation Buoy	■ -10 to -12
— Project Depth Contour	⚓ Wrecks-Submerged	◆ Green Navigation Buoy	■ -12' to -15'
			■ -15' to -18'
			■ -18' to -20'
			■ -20' and below

NOTES: Coordinate System: North American Datum of 1983 (NAD83), projected to the State Plane Coordinate System (SPCS), Louisiana South Zone. Distance units in U.S. Survey Feet.

Vertical Datum: Soundings are shown in feet and indicate depths below Mean Low Gulf Datum (MLG). Datum Relationships for Lower Atchafalaya River at Morgan City (03780) as of 2017: 0.0' NAVD88 (2009.55) = 1.89' MLG

The location of navigation aids are based on and provided by the U.S. Coast Guard. Reference is N.O.A.A. Navigation Chart No. 11355.

** Shoalest Sounding per Quarter per Reach.

*** High frequency (200 kHz) survey data represents the first signal return at a sounding location and will include suspended solids, known as "fluff", if present. Low frequency (20 kHz) survey data normally penetrates through this "fluff" layer to depict elevations of consolidated bottom material. Low frequency accuracies may vary depending on channel conditions and fathometer settings.

Gage Reading: MORGAN CITY: 3.9 MLG
Sea Conditions: CALM
Vessel Name: OB-189
Survey Type: CS
Sounding Frequency***: HIGH

Feet
0 500 1,000 1,500 2,000