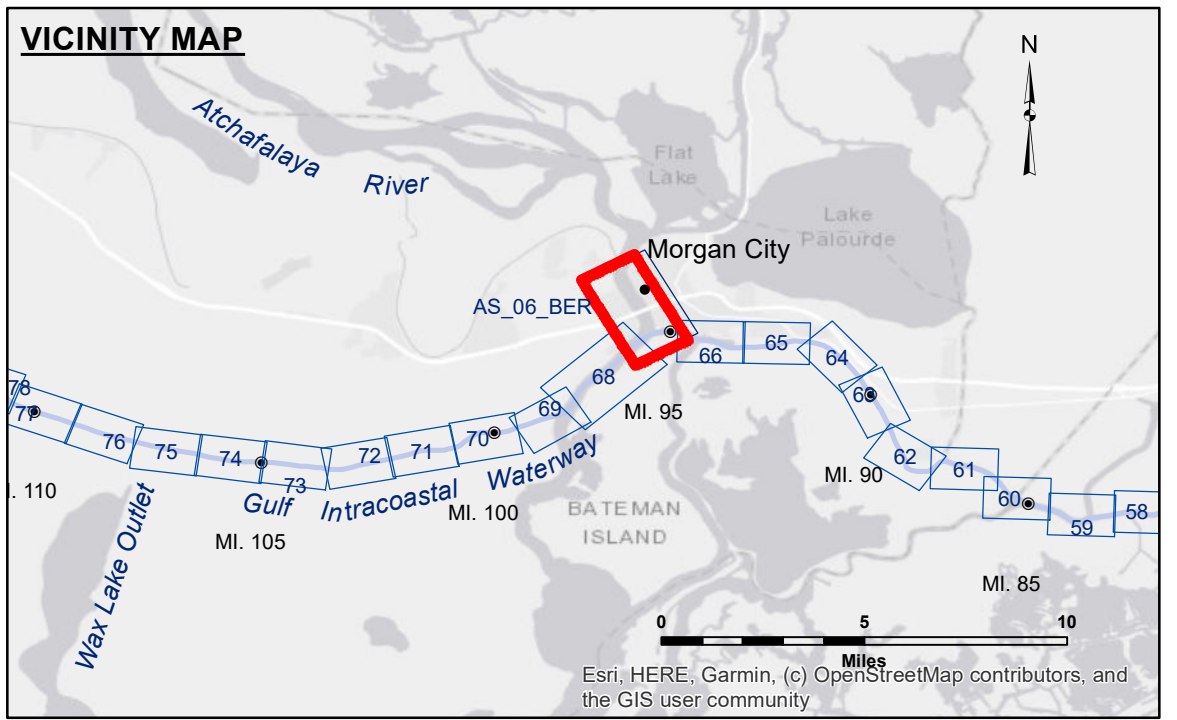


DISCLAIMER
 The information depicted on this map represents the results of a survey conducted by the U.S. Army Corps of Engineers. The data represents the results of data collection for a specific US Army Corps of Engineers project and is not intended for general use. It is only valid for its intended use, and its accuracy is not guaranteed. The user is responsible for the results of any application of the data for other than its intended purpose. Data Constants Hydrographic survey data is subject to change rapidly due to several factors including but not limited to changing bathymetry, sedimentation, and other factors. The user is responsible for the results of any application of the data for other than its intended purpose. The information depicted on this map represents the results of a survey conducted by the U.S. Army Corps of Engineers. The data represents the results of data collection for a specific US Army Corps of Engineers project and is not intended for general use. It is only valid for its intended use, and its accuracy is not guaranteed. The user is responsible for the results of any application of the data for other than its intended purpose.

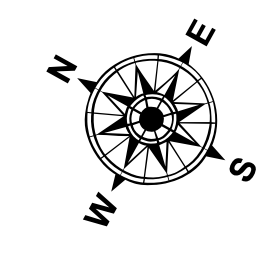
Submitted:	Surveyed By:
Recommended:	Plotted By:
Approved:	Checked By:
U.S. ARMY CORPS OF ENGINEERS NEW ORLEANS DISTRICT Other: Waterways Maintenance Section	

**ATCHAFALAYA RIVER
 BERWICK HARBOR
 AS_06_BER_20220629_CS
 29 June 2022**

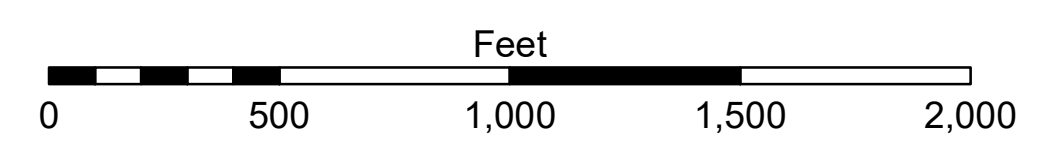


LEGEND	
--- Federal Navigation Channel	○ Cable Area
— Federal Navigation Center Line	□ Placement Area
— As-built Pipeline/Cable	□ Anchorage Area
..... Unconfirmed Pipeline/Cable	⊗ Obstruction Point
— Project Depth Contour	⚓ Wrecks-Submerged
□ Borrow Area	★ Beacon, General
● Shoalest Sounding**	◆ Red Navigation Buoy
◆ Green Navigation Buoy	

□ -6' and above
■ -6 to -8
■ -8 to -10
■ -10 to -12
■ -12' to -15'
■ -15' to -18'
■ -18' to -20'
■ -20' and below



Gage Reading: VRS RTN: 4.29 MLG AVG
 Sea Conditions: CALM
 Vessel Name: OB-167
 Survey Type: CONDITION
 Sounding Frequency***: HIGH



NOTES:
 Horizontal Coordinate System:
 North American Datum of 1983 (NAD83), projected to the State Plane Coordinate System (SPCS), Louisiana South Zone. Distance units in U.S. Survey Feet.
 Vertical Datum:
 Soundings are shown in feet and indicate depths below Mean Low Gulf Datum (MLG). Datum Relationships for Lower Atchafalaya River at Morgan City (03780) as of 2017: 0.0' NAVD88 (2009.55) = 1.89' MLG
 The location of navigation aids are based on and provided by the U.S. Coast Guard.
 2017 Aerial Photography data source: NAIP, 1998 DOQQ imagery shown in green from USGS.
 Reference is N.O.A.A. Navigation Chart No. 11355.
 ** Shoalest Sounding per Quarter per Reach.
 *** High frequency (200 kHz) survey data represents the first signal return at a sounding location and will include suspended solids, known as "fluff", if present. Low frequency (20 kHz) survey data normally penetrates through this "fluff" layer to depict elevations of consolidated bottom material. Low frequency accuracies may vary depending on channel conditions and fathometer settings.

**Sheet Reference Number
 6 of 66**