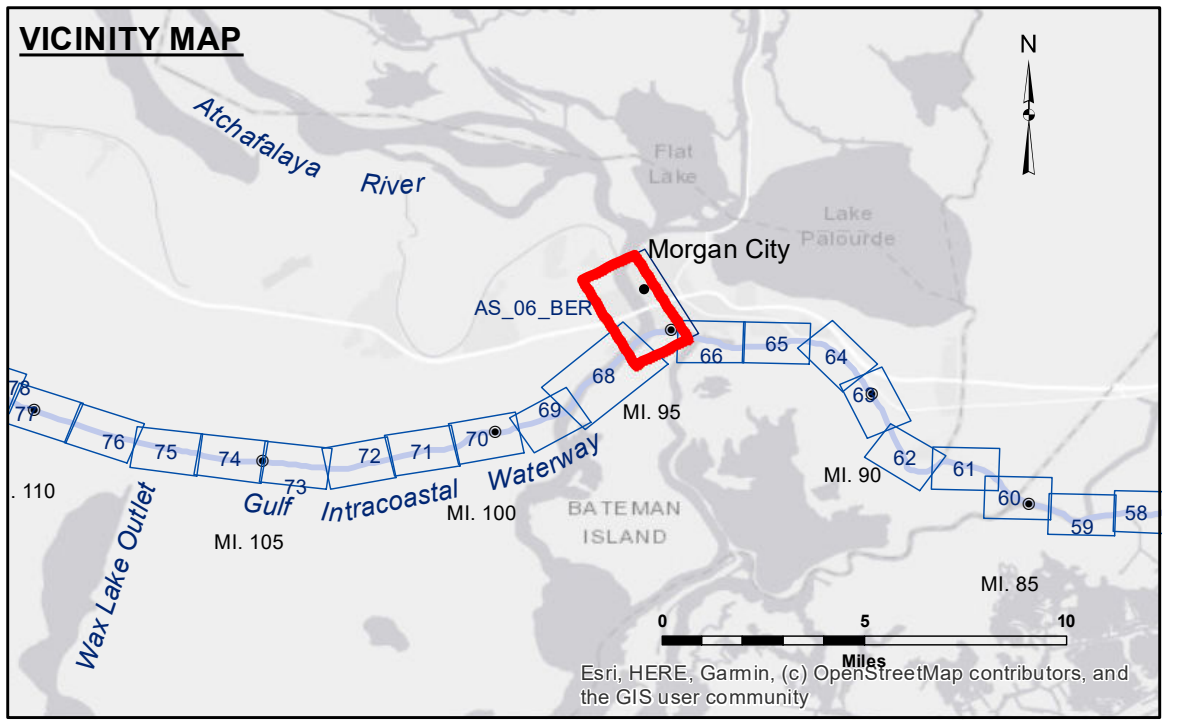


DISCLAIMER: The United States Government furnishes these data and the recipient accepts and uses them with the express understanding that the data are not to be used for any purpose other than that for which they were prepared, and that the Government makes no warranty, expressed or implied, concerning the accuracy, completeness, reliability, or suitability for any particular purpose of the data. The user is responsible for the results of the application of the data for other than its intended purpose. Data furnished by the United States Government are subject to change without notice and the recipient may not transfer these data to others without also transferring this disclaimer. The information depicted on this map represents the results of a survey conducted on the date of the survey and is not intended to represent the general condition existing at that time.

U.S. ARMY CORPS OF ENGINEERS NEW ORLEANS DISTRICT	
Submitted:	RYLAND/MOLLERE
Recommended:	Chief, Survey Section
Approved:	Chief, Waterways Maintenance Section
Surveyed By:	RYLAND/MOLLERE
Plotted By:	AO
Checked By:	AO

**ATCHAFALAYA RIVER
BERWICK HARBOR
AS_06_BER_20220818_CS
18 August 2022**



LEGEND

--- Federal Navigation Channel	○ Cable Area	□ Borrow Area	□ -6' and above
— Federal Navigation Center Line	■ Placement Area	● Shoalest Sounding**	■ -6 to -8
— As-built Pipeline/Cable	□ Anchorage Area	★ Beacon, General	■ -8 to -10
..... Unconfirmed Pipeline/Cable	⊗ Obstruction Point	◆ Red Navigation Buoy	■ -10 to -12
— Project Depth Contour	⚓ Wrecks-Submerged	◆ Green Navigation Buoy	■ -12' to -15'
			■ -15' to -18'
			■ -18' to -20'
			■ -20' and below

NOTES:

Horizontal Coordinate System:
North American Datum of 1983 (NAD83), projected to the State Plane Coordinate System (SPCS), Louisiana South Zone. Distance units in U.S. Survey Feet.

Vertical Datum:
Soundings are shown in feet and indicate depths below Mean Low Gulf Datum (MLG). Datum Relationships for Lower Atchafalaya River at Morgan City (03780) as of 2017: 0.0' NAVD88 (2009.55) = 1.89' MLG

The location of navigation aids are base on and provided by the U.S. Coast Guard.

2017 Aerial Photography data source: NAIP, 1998 DOQQ Imagery shown in green from USGS.

Reference is N.O.A.A. Navigation Chart No. 11355.

** Shoalest Sounding per Quarter per Reach.

*** High frequency (200 kHz) survey data represents the first signal return at a sounding location and will include suspended solids, known as "fluff", if present. Low frequency (20 kHz) survey data normally penetrates through this "fluff" layer to depict elevations of consolidated bottom material. Low frequency accuracies may vary depending on channel conditions and fathometer settings.

Gage Reading: MORGAN CITY: 3.2 MLG AVG
Sea Conditions: CALM
Vessel Name: M/V OB 167
Survey Type: CONDITION
Sounding Frequency***: HIGH

**Sheet Reference Number
6 of 66**

Revision Number:
4.2-20220818