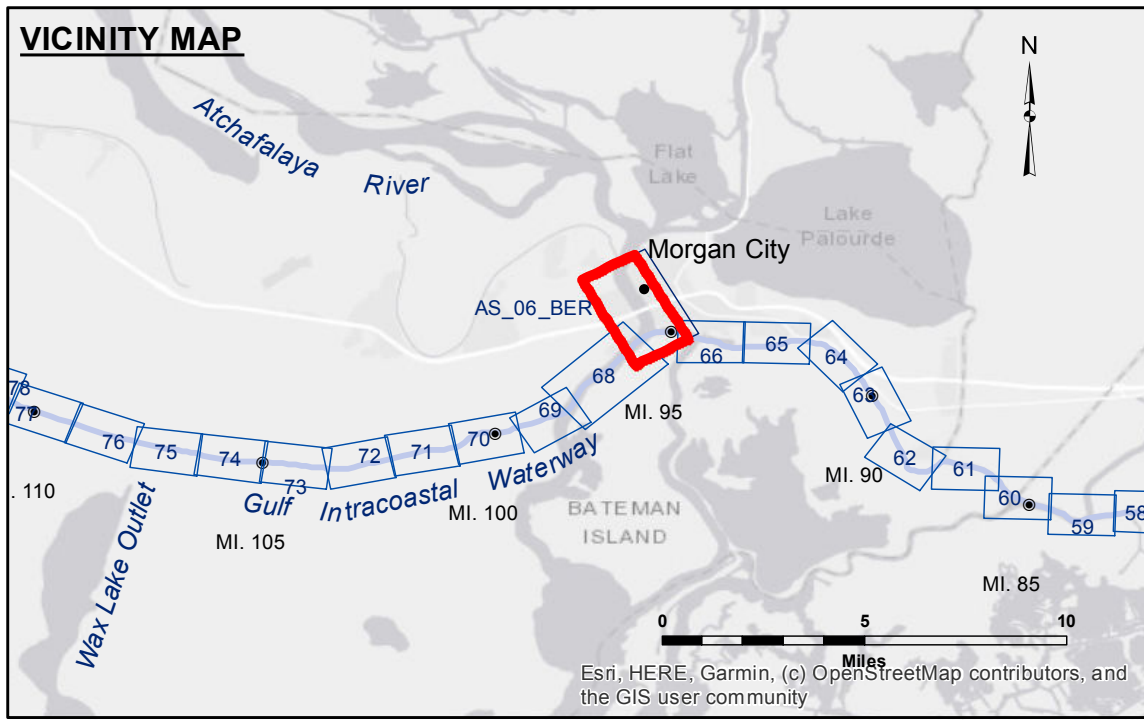


DISCLAIMER: The United States Government furnishes these data and the recipient accepts and uses them with the express understanding that the Government makes no warranty, either expressed or implied, concerning the accuracy, completeness, reliability, usability or suitability for any particular purpose of the information. The user is responsible for the results of the use of the information. The application of the data for other than its intended purpose is not authorized. Data contained in this survey data is subject to change rapidly due to several factors including but not limited to changing hydrographic conditions, sedimentation, and other factors. The Army Corps of Engineers does not warrant the accuracy of the data in these data to others without also transferring this disclaimer. The information depicted on this map represents the results of a survey conducted on the ground and is not intended to be used as a substitute for a more detailed survey. The Corps of Engineers is not responsible for any errors or omissions in this data or for any damage or loss resulting from its use.

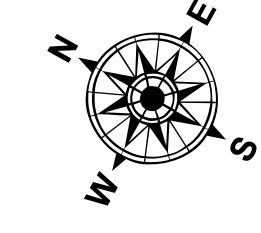
U.S. ARMY CORPS OF ENGINEERS NEW ORLEANS DISTRICT	
Submitted:	Surveyed By: RYLAND/ADAMS
Recommended:	Plotted By: BD
Approved:	Checked By: ADJH

**ATCHAFALAYA RIVER
BERWICK HARBOR
AS_06_BER_20221026_AD
26 October 2022**

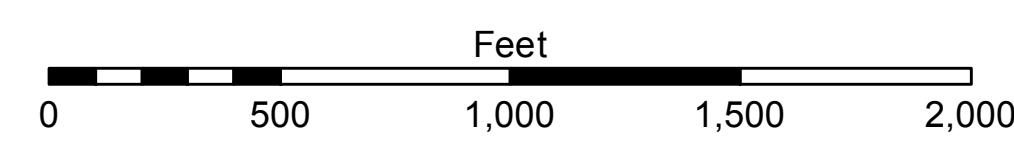


LEGEND	
--- Federal Navigation Channel	○ Cable Area
— Federal Navigation Center Line	□ Placement Area
— As-built Pipeline/Cable	□ Anchorage Area
..... Unconfirmed Pipeline/Cable	⊗ Obstruction Point
— Project Depth Contour	★ Wrecks-Submerged
□ Borrow Area	★ Beacon, General
● Shoalest Sounding**	◆ Red Navigation Buoy
★ Beacon, General	◆ Green Navigation Buoy

□ -6' and above
■ -6 to -8
■ -8 to -10
■ -10 to -12
■ -12' to -15'
■ -15' to -18'
■ -18' to -20'
■ -20' and below



Gage Reading: MORGAN CITY: 1.80 MLG
 Sea Conditions: CALM
 Vessel Name: M/V OB 189
 Survey Type: CONDITION
 Sounding Frequency***: HIGH



NOTES:
 Horizontal Coordinate System:
 North American Datum of 1983 (NAD83), projected to the State Plane Coordinate System (SPCS), Louisiana South Zone. Distance units in U.S. Survey Feet.
 Vertical Datum:
 Soundings are shown in feet and indicate depths below Mean Low Gulf Datum (MLG). Datum Relationships for Lower Atchafalaya River at Morgan City (03780) as of 2017: 0.0' NAVD88 (2009.55) = 1.89' MLG
 The location of navigation aids are base on and provided by the U.S. Coast Guard.
 2017 Aerial Photography data source: NAIP, 1998 DOQQ Imagery shown in green from USGS.
 Reference is N.O.A.A. Navigation Chart No. 11355.
 ** Shoalest Sounding per Quarter per Reach.
 *** High frequency (200 kHz) survey data represents the first signal return at a sounding location and will include suspended solids, known as "fluff", if present. Low frequency (20 kHz) survey data normally penetrates through this "fluff" layer to depict elevations of consolidated bottom material. Low frequency accuracies may vary depending on channel conditions and fathometer settings.

**Sheet Reference Number
6 of 66**