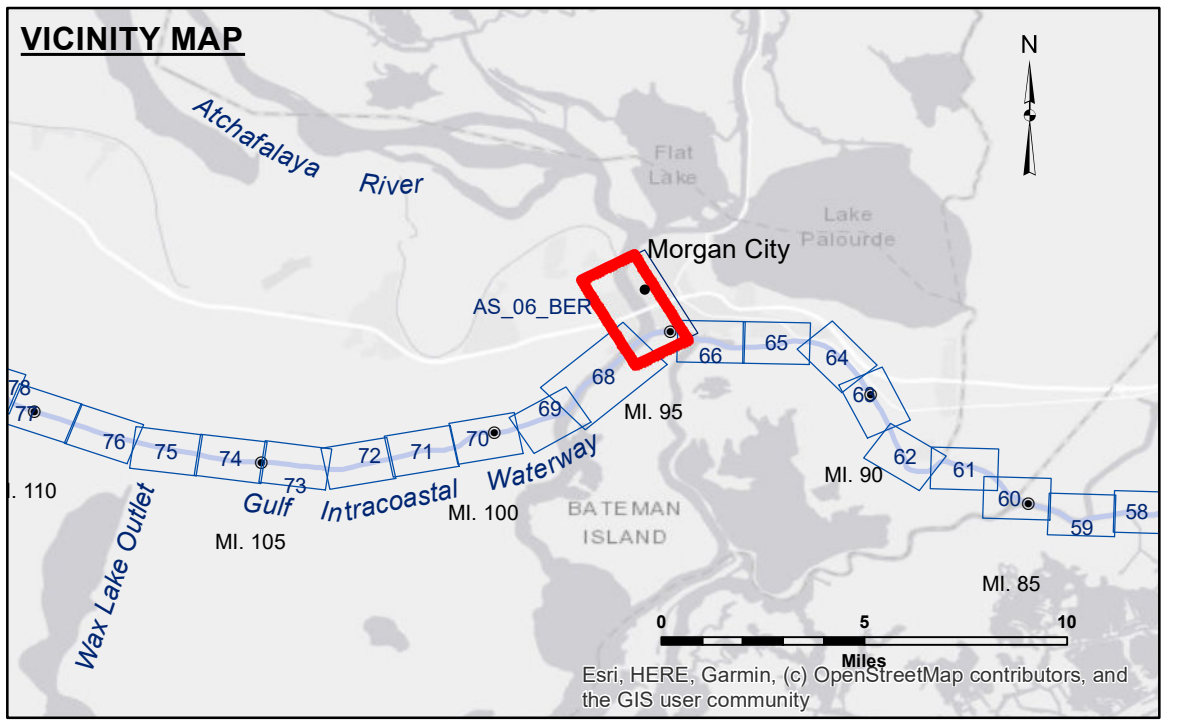


DISCLAIMER
 The data represented on this map is the result of data collection for a specific US Army Corps of Engineers project. The data is only valid for its intended use, and its accuracy is not guaranteed. The user is responsible for the results of their use of the data. The application of the data for other than its intended purpose is not recommended. Data Constants: Hydrographic survey data is subject to change rapidly due to several factors including but not limited to changing bathymetry, sedimentation, and structural changes. The US Army Corps of Engineers accepts no responsibility for changes in the hydrographic conditions when developed after the date of the survey. The information depicted on this map represents the results of a survey and is not intended to be used as a substitute for a professional survey. The information is provided for informational purposes only and should not be used for any other purpose without the express written consent of the US Army Corps of Engineers. The information is provided as a general condition existing at that time.

U.S. ARMY CORPS OF ENGINEERS NEW ORLEANS DISTRICT		
Submitted:	Surveyed By: ADAMS/CHAMPINE	Placed By: BD
Recommended:	Chief, Survey Section	Checked By: AD/JH
Approved:	Chief, Waterways Maintenance Section	

**ATCHAFALAYA RIVER
 BERWICK HARBOR
 AS_06_BER_20240618_CS
 18 June 2024**



LEGEND

--- Federal Navigation Channel	○ Cable Area	□ Borrow Area
— Federal Navigation Center Line	■ Placement Area	● Shoalest Sounding**
— As-built Pipeline/Cable	⊗ Anchorage Area	★ Beacon, General
..... Unconfirmed Pipeline/Cable	⊗ Obstruction Point	◆ Red Navigation Buoy
— Project Depth Contour	⚓ Wrecks-Submerged	◆ Green Navigation Buoy

NOTES:

Horizontal Coordinate System:
 North American Datum of 1983 (NAD83), projected to the State Plane Coordinate System (SPCS), Louisiana South Zone. Distance units in U.S. Survey Feet.

Vertical Datum:
 Soundings are shown in feet and indicate depths below Mean Low Gulf Datum (MLG). Datum Relationships for Lower Atchafalaya River at Morgan City (03780) as of 2017: 0.0' NAVD83 (2009.55) = 1.89' MLG

The location of navigation aids are base on and provided by the U.S. Coast Guard.

2017 Aerial Photography data source: NAIP, 1998 DOQQ imagery shown in green from USGS.

Reference is N.O.A.A. Navigation Chart No. 11355.

** Shoalest Sounding per Quarter per Reach.

*** High frequency (200 kHz) survey data represents the first signal return at a sounding location and will include suspended solids, known as "fluff", if present. Low frequency (20 kHz) survey data normally penetrates through this "fluff" layer to depict elevations of consolidated bottom material. Low frequency accuracies may vary depending on channel conditions and fathometer settings.

Gage Reading: MORGAN CITY: 5.70 MLG AVG.
 Sea Conditions: 0-1FT
 Vessel Name: M/V VALENTOUR
 Survey Type: CONDITION
 Sounding Frequency***: HIGH

Feet
 0 500 1,000 1,500 2,000

**Sheet
 Reference
 Number
 6 of 66**

Revision Number:
 4-2-2024(04/24)