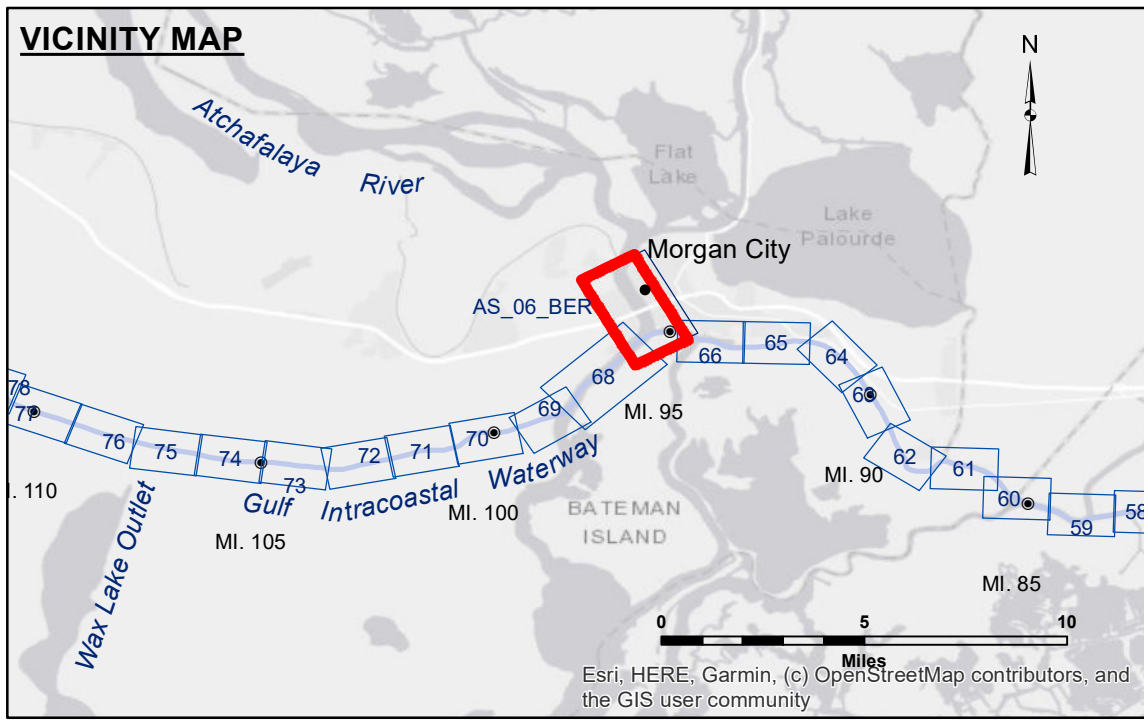


DISCLAIMER: The United States Government makes these data and the recipient accepts and uses them with the express understanding that the United States Government makes no warranty, expressed or implied, concerning the accuracy, completeness, reliability, usability or suitability for any particular purpose of the information. The user is responsible for the results of the application of the data for other than its intended purpose. Data Constants Hydrographic survey data is subject to change rapidly due to several factors including but not limited to changing hydrographic conditions which develop after the date of the survey. The Corps of Engineers accepts no responsibility for changes in the hydrographic conditions which develop after the date of the survey. The information depicted on this map represents the results of a survey conducted on the general condition existing at that time. The recipient may not transfer these data to others without obtaining the permission of the U.S. Army Corps of Engineers. The recipient may not transfer these data to others without obtaining the permission of the U.S. Army Corps of Engineers. The recipient may not transfer these data to others without obtaining the permission of the U.S. Army Corps of Engineers.

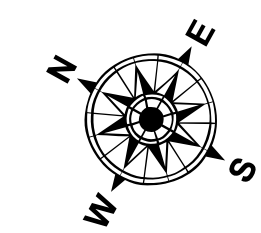
| | |
|--|--------------------------------|
| U.S. ARMY CORPS OF ENGINEERS NEW ORLEANS DISTRICT | |
| Submitted: | Surveyed By: ADAMS/CHAMPINE |
| Recommended: Chief, Survey Section | Plotted By: JH |
| Approved: | Checked By: JH |

**ATCHAFALAYA RIVER
BERWICK HARBOR
AS_06_BER_20240807_CS
07 August 2024**

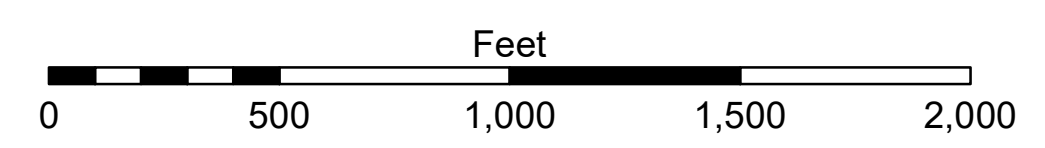


| LEGEND | |
|----------------------------------|-------------------------|
| --- Federal Navigation Channel | ○ Cable Area |
| — Federal Navigation Center Line | □ Placement Area |
| — As-built Pipeline/Cable | □ Anchorage Area |
| Unconfirmed Pipeline/Cable | ⊗ Obstruction Point |
| — Project Depth Contour | ⚓ Wrecks-Submerged |
| □ Borrow Area | ★ Beacon, General |
| ● Shoalest Sounding** | ◆ Red Navigation Buoy |
| ☆ Beacon, General | ◆ Green Navigation Buoy |

| |
|------------------|
| □ -6' and above |
| ■ -6 to -8 |
| ■ -8 to -10 |
| ■ -10 to -12 |
| ■ -12' to -15' |
| ■ -15' to -18' |
| ■ -18' to -20' |
| ■ -20' and below |



Gage Reading: MORGAN CITY: 4.26 MLG AVG.
Sea Conditions: 0-1FT
Vessel Name: VALENTOUR
Survey Type: CONDITION
Sounding Frequency***: HIGH



NOTES:
Horizontal Coordinate System: North American Datum of 1983 (NAD83), projected to the State Plane Coordinate System (SPCS), Louisiana South Zone. Distance units in U.S. Survey Feet.
Vertical Datum: Soundings are shown in feet and indicate depths below Mean Low Gulf Datum (MLG). Datum Relationships for Lower Atchafalaya River at Morgan City (03780) as of 2017: 0.0' NAVD88 (2009.55) = 1.89' MLG
The location of navigation aids are base on and provided by the U.S. Coast Guard.
2017 Aerial Photography data source: NAIP, 1998 DOQQ Imagery shown in green from USGS.
Reference is N.O.A.A. Navigation Chart No. 11355.
** Shoalest Sounding per Quarter per Reach.
*** High frequency (200 kHz) survey data represents the first signal return at a sounding location and will include suspended solids, known as "fluff", if present. Low frequency (20 kHz) survey data normally penetrates through this "fluff" layer to depict elevations of consolidated bottom material. Low frequency accuracies may vary depending on channel conditions and fathometer settings.

**Sheet Reference Number
6 of 66**