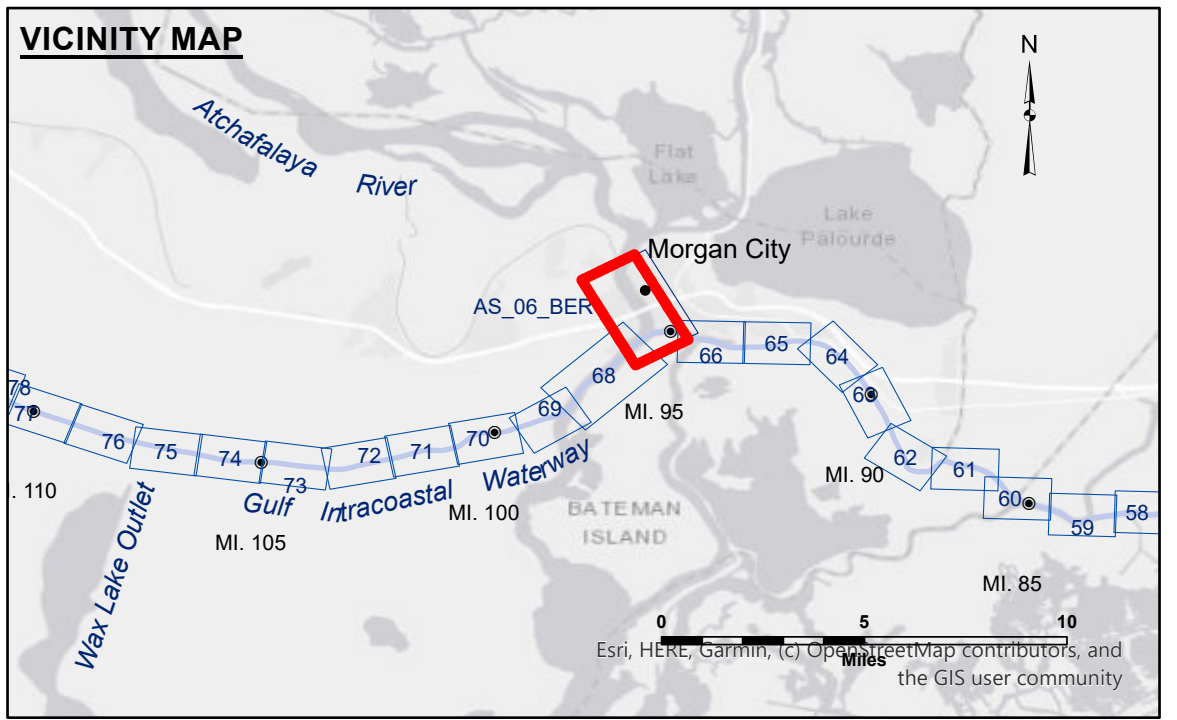


DISCLAIMER: The data presented in this map were collected for a specific US Army Corps of Engineers activity and indicates the general existing conditions. As such, the user is responsible for the results of any of the application of the data for other than its intended purpose. The user is responsible for the results of any of the application of the data for other than its intended purpose. The user is responsible for the results of any of the application of the data for other than its intended purpose. The user is responsible for the results of any of the application of the data for other than its intended purpose.

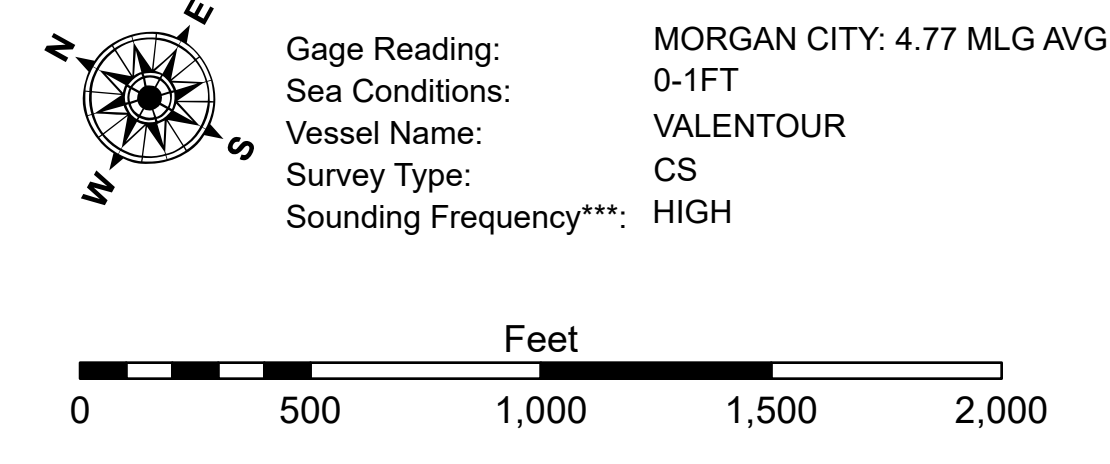
DISCLAIMER: The United States Government furnishes these data and the recipient accepts and uses them with the express understanding that the data are not to be used for any purpose other than that for which they were collected, expressed, or implied concerning the accuracy, completeness, reliability, usability or suitability for any particular purpose of the recipient. The recipient is responsible for the results of any use of these data for any purpose other than that for which they were collected, expressed, or implied concerning the accuracy, completeness, reliability, usability or suitability for any particular purpose of the recipient. The recipient is responsible for the results of any use of these data for any purpose other than that for which they were collected, expressed, or implied concerning the accuracy, completeness, reliability, usability or suitability for any particular purpose of the recipient.

U.S. ARMY CORPS OF ENGINEERS	
Submitted By: ADAMSCHAMPINE	Plotted By: JH
Recommended By: Chief, Survey Section	Checked By: JH
Approved By: Chief, Waterways Maintenance Section	



LEGEND	
--- Federal Navigation Channel	○ Cable Area
— Federal Navigation Center Line	□ Placement Area
— As-built Pipeline/Cable	□ Anchorage Area
..... Unconfirmed Pipeline/Cable	⊗ Obstruction Point
— Project Depth Contour	⚓ Wrecks-Submerged
□ Borrow Area	★ Beacon, General
● Shoalest Sounding**	◆ Red Navigation Buoy
◆ Green Navigation Buoy	

□ -6' and above
■ -6 to -8
■ -8 to -10
■ -10 to -12
■ -12' to -15'
■ -15' to -18'
■ -18' to -20'
■ -20' and below



NOTES:
Horizontal Coordinate System: North American Datum of 1983 (NAD83), projected to the State Plane Coordinate System (SPCS), Louisiana South Zone. Distance units in U.S. Survey Feet.
Vertical Datum: Soundings are shown in feet and indicate depths below Mean Low Gulf Datum (MLG). Datum Relationships for Lower Atchafalaya River at Morgan City (03780) as of 2025: 0.0' NAVD88 (2009.55) = 2.19' MLG
The location of navigation aids are base on and provided by the U.S. Coast Guard.
2021 Aerial Photography data source: NAIP, 1998 DOQQ imagery shown in green from USGS.
Reference is N.O.A.A. Navigation Chart No. 11355.
** Shoalest Sounding per Quarter per Reach.
*** High frequency (200 kHz) survey data represents the first signal return at a sounding location and will include suspended solids, known as "fluff", if present. Low frequency (20 kHz) survey data normally penetrates through this "fluff" layer to depict elevations of consolidated bottom material. Low frequency accuracies may vary depending on channel conditions and fathometer settings.

**ATCHAFALAYA RIVER
BERWICK HARBOR
AS_06_BER_20250402_CS
02 April 2025**

**Sheet
Reference
Number
6 of 66**