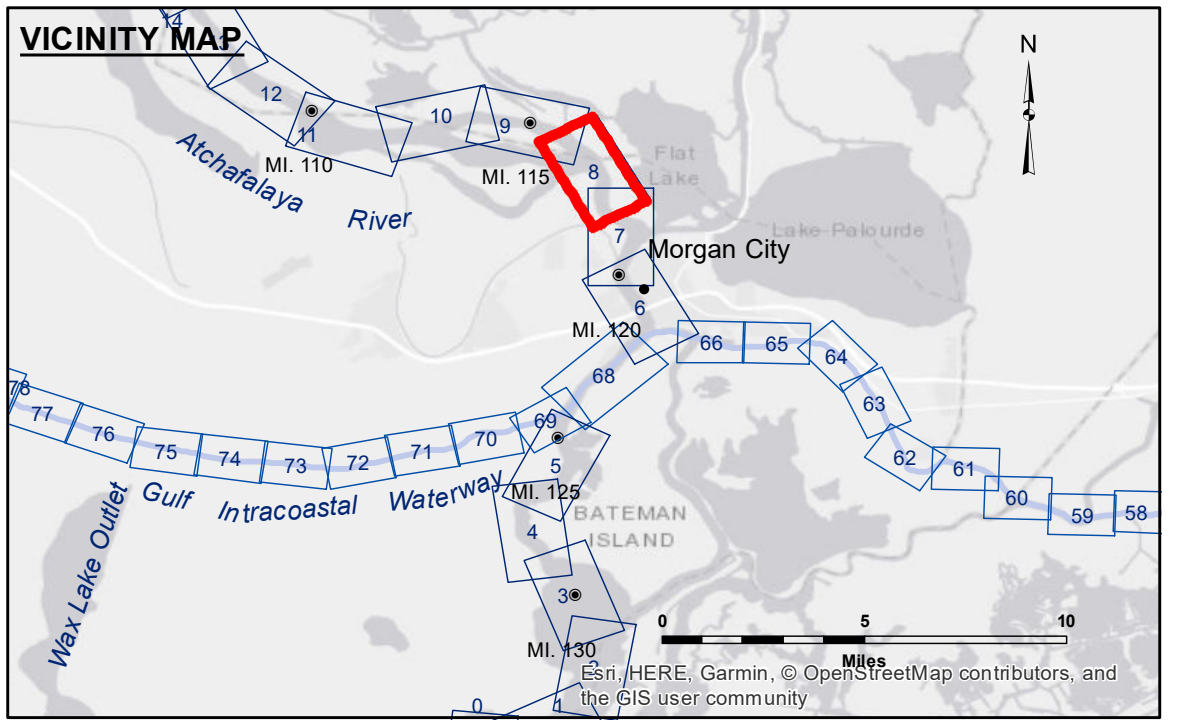


**DISCLAIMER:** The data represents the results of data collection processing for a specific US Army Corps of Engineers project. The data is not intended for use in any other project. It is only valid for its intended use, control, time and accuracy specifications. The user is responsible for the results. The user must verify the application of the data for other than its intended purpose.

**DATA CONSTRAINTS:** Hydrographic survey data is subject to change rapidly due to several factors including but not limited to dredging, sedimentation, and other factors. The user must verify the data for its intended use. The user must verify the data for its intended use. The user must verify the data for its intended use.

**ACCESS:** The United States Government furnishes these data and the recipient accepts and uses them with the express understanding that the data are not to be used for any other purpose, in whole or in part, without the express written consent of the United States Government. The recipient may not transfer these data to others without obtaining the consent of the United States Government. The recipient may not transfer these data to others without obtaining the consent of the United States Government. The recipient may not transfer these data to others without obtaining the consent of the United States Government.

U.S. ARMY CORPS OF ENGINEERS NEW ORLEANS DISTRICT	
Submitted:	RYLAND/HOSHMAN
Recommended:	Checked By: AO
Approved:	Checked By: AO



**LEGEND**

--- Federal Navigation Channel	○ Cable Area	□ Borrow Area	■ -12' and above
— Federal Navigation Center Line	□ Placement Area	● Shoalest Sounding**	□ -12' and below
— As-built Pipeline/Cable	□ Anchorage Area	★ Beacon, General	
..... Unconfirmed Pipeline/Cable	⊗ Obstruction Point	◆ Red Navigation Buoy	
— Project Depth Contour	✈ Wrecks-Submerged	◆ Green Navigation Buoy	

**NOTES:**

Horizontal Coordinate System:  
North American Datum of 1983 (NAD83), projected to the State Plane Coordinate System (SPCS), Louisiana South Zone. Distance units in U.S. Survey Feet.

Vertical Datum:  
Soundings are shown in feet and indicate depths below Mean Low Gulf Datum (MLG).

The location of navigation aids are based on and provided by the U.S. Coast Guard.

Reference is N.O.A. Navigation Chart No. 11355.

\*\* Shoalest Sounding per Quarter per Reach.

\*\*\* High frequency (200 kHz) survey data represents the first signal return at a sounding location and will include suspended solids, known as "fluff", if present. Low frequency (20 kHz) survey data normally penetrates through this "fluff" layer to depict elevations of consolidated bottom material. Low frequency accuracies may vary depending on channel conditions and fathometer settings.

Gage Reading: WF:6.8MC:3.3 USED:3.9 MLG  
Sea Conditions: CALM  
Vessel Name: M/V OB189  
Survey Type: CONDITION  
Sounding Frequency\*\*\*: HIGH

0 500 1,000 1,500 2,000 Feet

**ATCHAFALAYA RIVER  
STOUTS PASS  
AS\_08\_STP\_20180816\_AD  
16 August 2018**

**Sheet  
Reference  
Number  
8 of 66**