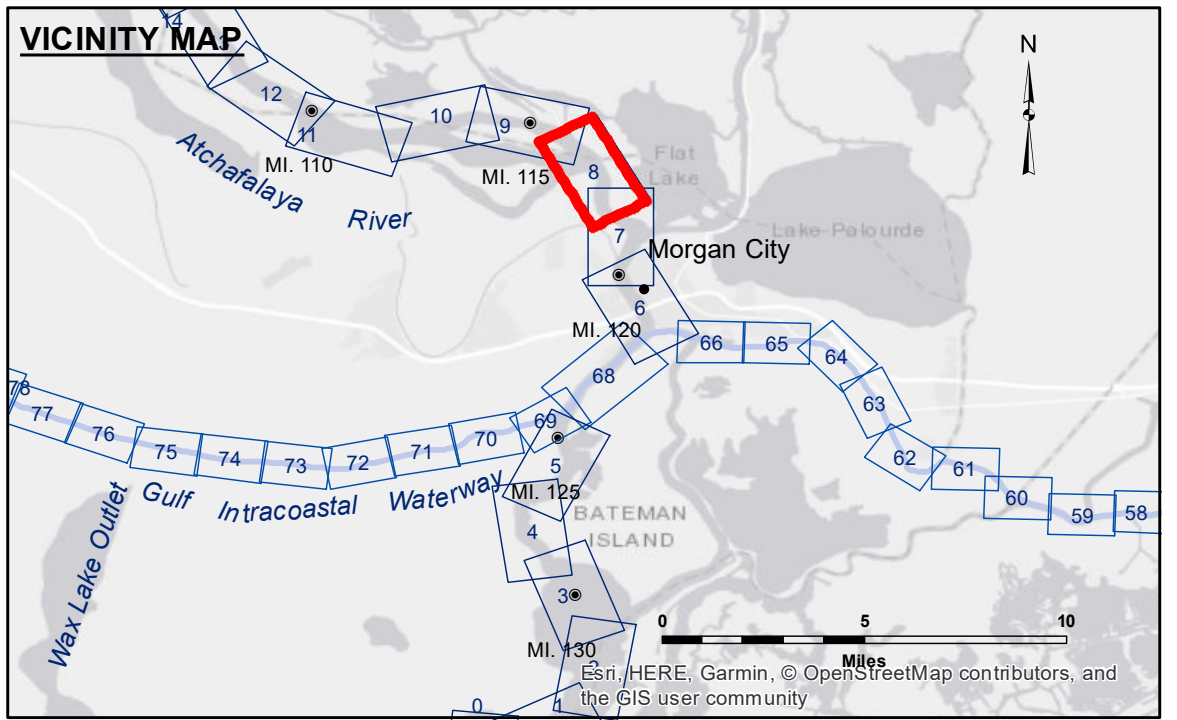


DISCLAIMER: The data represents the results of data collection processing for a specific US Army Corps of Engineers project. The user is responsible for the results, accuracy, and application of the data for other than its intended purpose. Data Contaminants: Hydrographic survey data is subject to change rapidly due to several factors including but not limited to dredging, sedimentation, and changes in channel conditions. The US Army Corps of Engineers does not warrant the accuracy of the data for use in the hydrographical conditions when developed after the date of the survey. Product maintainers should not rely solely upon this information.

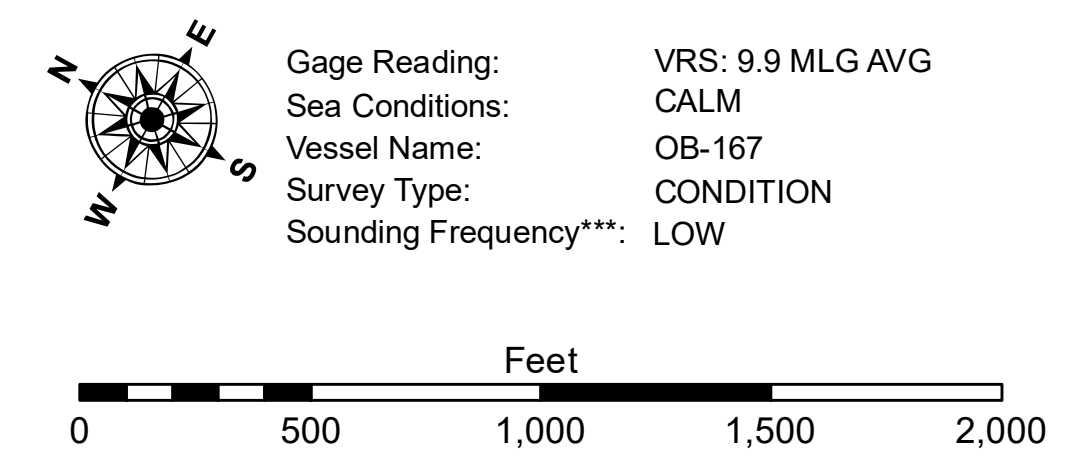
ACCEPTANCE: The United States Government furnishes these data and the recipient accepts and uses them with the express understanding that the Government makes no warranty, either expressed or implied, concerning the accuracy, completeness, reliability, or suitability for any particular purpose of the data. The recipient understands that the Government is not liable for any use of the data, in whole or in part, under any liability whatsoever to any person by reason of any use made thereof. These data belong to the Government. Therefore, the recipient may not transfer, disseminate, or otherwise use these data to others without obtaining the permission of the US Army Corps of Engineers. The recipient may not transfer, disseminate, or otherwise use these data to others without obtaining the permission of the US Army Corps of Engineers. The recipient may not transfer, disseminate, or otherwise use these data to others without obtaining the permission of the US Army Corps of Engineers. The recipient may not transfer, disseminate, or otherwise use these data to others without obtaining the permission of the US Army Corps of Engineers.

U.S. ARMY CORPS OF ENGINEERS NEW ORLEANS DISTRICT	
Submitted:	Surveyed By: SPPM
Recommended: Chief, Survey Section	Plotted By: BD
Approved: Chief, Waterways Maintenance Section	Checked By: AC



LEGEND

--- Federal Navigation Channel	○ Cable Area	□ Borrow Area	□ -10' and above
— Federal Navigation Center Line	□ Placement Area	● Shoalest Sounding**	□ -10 to -12
— As-built Pipeline/Cable	□ Anchorage Area	☆ Beacon, General	□ -12' to -15'
..... Unconfirmed Pipeline/Cable	⊗ Obstruction Point	◆ Red Navigation Buoy	□ -15' to -18'
— Project Depth Contour	⚓ Wrecks-Submerged	◆ Green Navigation Buoy	□ -18' to -20'
			□ -20' and below



NOTES:
 Horizontal Coordinate System: North American Datum of 1983 (NAD83), projected to the State Plane Coordinate System (SPCS), Louisiana South Zone. Distance units in U.S. Survey Feet.
 Vertical Datum: Soundings are shown in feet and indicate depths below Mean Low Gulf Datum (MLG).
 The location of navigation aids are base on and provided by the U.S. Coast Guard.
 2010 Aerial Photography data source: NAIP, 1998 DOQQ imagery shown in green from USGS.
 Reference is N.O.A. Navigation Chart No. 11355.
 ** Shoalest Sounding per Quarter per Reach.
 *** High frequency (200 kHz) survey data represents the first signal return at a sounding location and will include suspended solids, known as "fluff", if present. Low frequency (20 kHz) survey data normally penetrates through this "fluff" layer to depict elevations of consolidated bottom material. Low frequency accuracies may vary depending on channel conditions and fathometer settings.

**ATCHAFALAYA RIVER
 STOUTS PASS
 AS_08_STP_20190410_CS
 10 April 2019**

**Sheet
 Reference
 Number
 8 of 66**