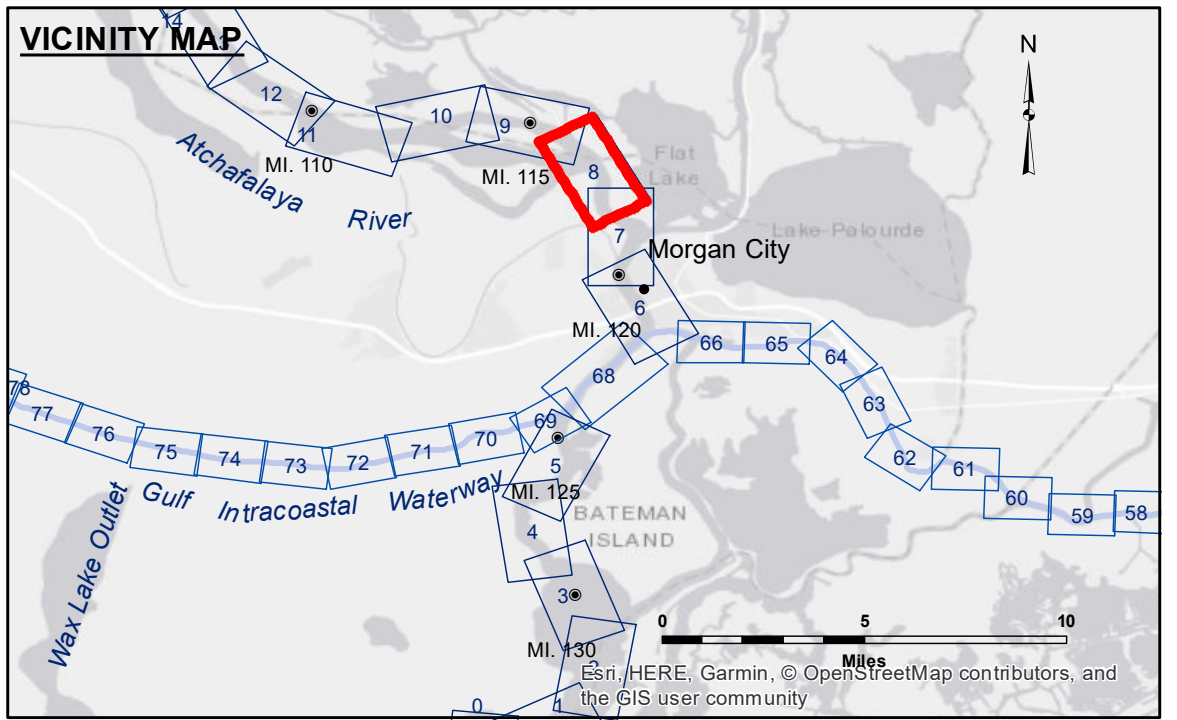


DISCLAIMER: The data represents the results of data collection processing for a specific US Army Corps of Engineers project. The data is not intended for use in any other project or for any purpose other than the specific project for which it was collected. The user is responsible for the results and accuracy of the data when used for any purpose other than the specific project for which it was collected. The user is responsible for the results and accuracy of the data when used for any purpose other than the specific project for which it was collected. The user is responsible for the results and accuracy of the data when used for any purpose other than the specific project for which it was collected.

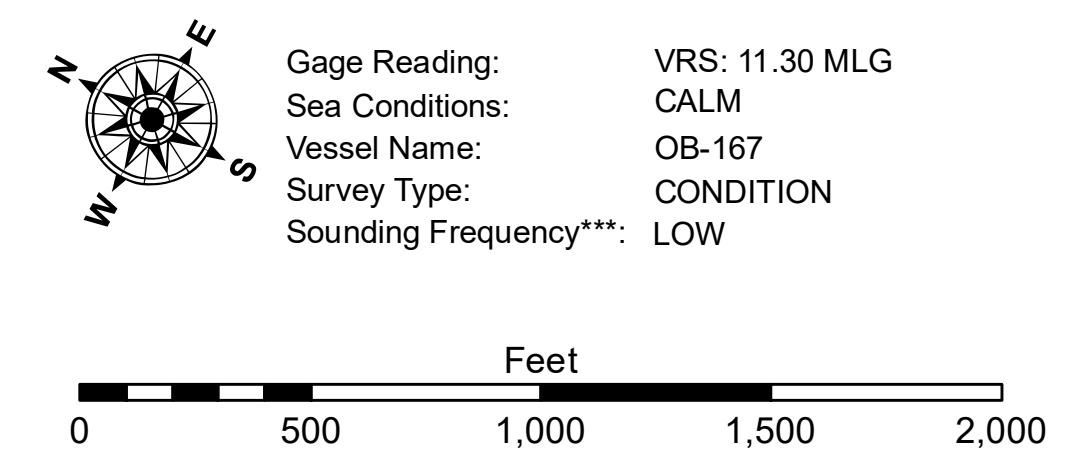
DISCLAIMER: The United States Government furnishes these data and the recipient accepts and uses them with the express understanding that the Government makes no warranty, expressed or implied, concerning the accuracy, completeness, reliability, usability or suitability for any particular purpose of the data. The recipient understands that the Government makes no liability whatsoever to any person by reason of any use made thereof. These data belong to the Government. Therefore the recipient may not transfer, disseminate, or otherwise use these data to others without obtaining the permission of the United States Government. The recipient may not transfer these data to others without obtaining the permission of the United States Government. The recipient may not transfer these data to others without obtaining the permission of the United States Government. The recipient may not transfer these data to others without obtaining the permission of the United States Government.

U.S. ARMY CORPS OF ENGINEERS NEW ORLEANS DISTRICT	
Submitted:	Surveyed By: SP/PS
Recommended: Chief Survey Section	Plotted By: AO
Approved: Chief Waterways Maintenance Section	Checked By: AO



LEGEND

--- Federal Navigation Channel	○ Cable Area	□ Borrow Area	□ -10' and above
— Federal Navigation Center Line	□ Placement Area	● Shoalest Sounding**	□ -10 to -12
— As-built Pipeline/Cable	□ Anchorage Area	★ Beacon, General	□ -12' to -15'
..... Unconfirmed Pipeline/Cable	⊗ Obstruction Point	◆ Red Navigation Buoy	□ -15' to -18'
— Project Depth Contour	⚓ Wrecks-Submerged	◆ Green Navigation Buoy	□ -18' to -20'
			□ -20' and below



NOTES:
 Horizontal Coordinate System:
 North American Datum of 1983 (NAD83), projected to the State Plane Coordinate System (SPCS), Louisiana South Zone. Distance units in U.S. Survey Feet.
 Vertical Datum:
 Soundings are shown in feet and indicate depths below Mean Low Gulf Datum (MLG).
 The location of navigation aids are base on and provided by the U.S. Coast Guard.
 2010 Aerial Photography data source: NAIP. 1998 DOQQ imagery shown in green from USGS.
 Reference is N.O.A. Navigation Chart No. 11355.
 ** Shoalest Sounding per Quarter per Reach.
 *** High frequency (200 kHz) survey data represents the first signal return at a sounding location and will include suspended solids, known as "fluff", if present. Low frequency (20 kHz) survey data normally penetrates through this "fluff" layer to depict elevations of consolidated bottom material. Low frequency accuracies may vary depending on channel conditions and fathometer settings.

**ATCHAFALAYA RIVER
 STOUTS PASS
 AS_08_STP_20190715_CS_POSTSTORM
 15 July 2019**

**Sheet
 Reference
 Number
 8 of 66**