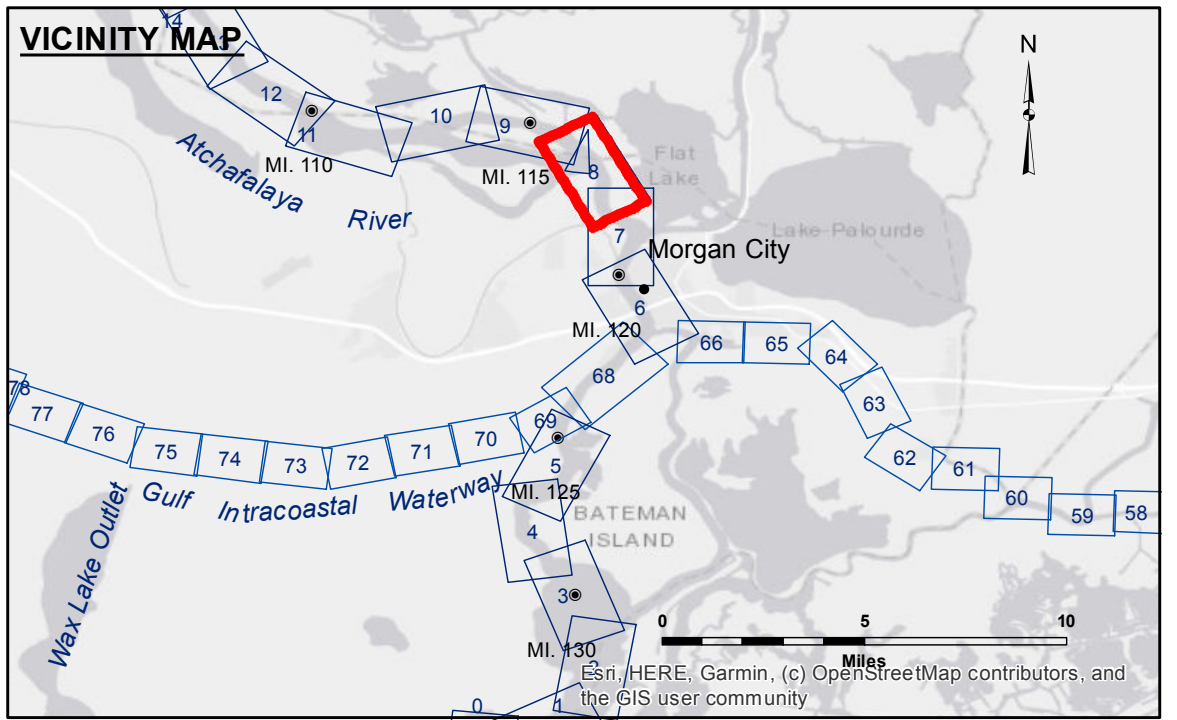


Access/Water
 These data and the recipient accepts and uses them with the express understanding that the data is provided for informational purposes only. The user is responsible for the results, accuracy, reliability, usability or suitability for any particular purpose of the data. The user shall not be held liable for any damage or loss resulting from the use of these data. The information depicted on this map represents the results of a survey conducted on the date of the survey and is not intended to represent the general condition existing at that time.

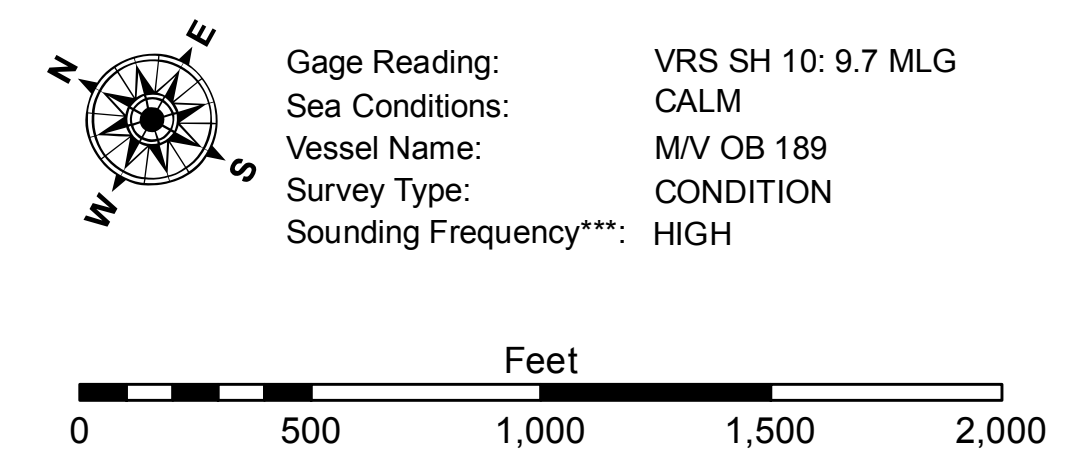
Distribution Liability: The data represents the results of data collection processing for a specific US Army Corps of Engineers project. The data is provided for informational purposes only and is not intended for use in any other project. The user is responsible for the results, accuracy, reliability, usability or suitability for any particular purpose of the data. The user shall not be held liable for any damage or loss resulting from the use of these data. The information depicted on this map represents the results of a survey conducted on the date of the survey and is not intended to represent the general condition existing at that time.

U.S. ARMY CORPS OF ENGINEERS NEW ORLEANS DISTRICT	
Submitted:	RYLAND/ADAMS
Recommended:	Checked By: AO
Approved:	Checked By: AC

**ATCHAFALAYA RIVER
 STOUTS PASS
 AS_08_STP_20200508_PR
 08 May 2020**



LEGEND			
--- Federal Navigation Channel	○ Cable Area	□ Borrow Area	□ -10' and above
— Federal Navigation Center Line	■ Placement Area	● Shoalest Sounding**	□ -10 to -12
— As-built Pipeline/Cable	□ Anchorage Area	★ Beacon, General	□ -12' to -15'
..... Unconfirmed Pipeline/Cable	⊗ Obstruction Point	◆ Red Navigation Buoy	□ -15' to -18'
— Project Depth Contour	✈ Wrecks-Submerged	◆ Green Navigation Buoy	□ -18' to -20'
			□ -20' and below



NOTES:
 Horizontal Coordinate System: North American Datum of 1983 (NAD83), projected to the State Plane Coordinate System (SPCS), Louisiana South Zone. Distance units in U.S. Survey Feet.
 Vertical Datum: Soundings are shown in feet and indicate depths below Mean Low Gulf Datum (MLG).
 The location of navigation aids are based on and provided by the U.S. Coast Guard.
 2010 Aerial Photography data source: NAIP 1998 DOQQ imagery shown in green from USGS.
 Reference is N.O.A. Navigation Chart No. 11355.
 ** Shoalest Sounding per Quarter per Reach.
 *** High frequency (200 kHz) survey data represents the first signal return at a sounding location and will include suspended solids, known as "fluff", if present. Low frequency (20 kHz) survey data normally penetrates through this "fluff" layer to depict elevations of consolidated bottom material. Low frequency accuracies may vary depending on channel conditions and fathometer settings.

**Sheet
 Reference
 Number
 8 of 66**