

Accession: The United States Government furnishes these data and the recipient accepts and uses them with the express understanding that they are not to be used for any purpose other than that for which they were prepared, and that the user is responsible for the results. The user is responsible for the results. The user is responsible for the results. The user is responsible for the results.

Distribution Liability: The data represents the results of data collection/processing for a specific US Army Corps of Engineers project. The data is not to be used for any purpose other than that for which it was prepared. The user is responsible for the results. The user is responsible for the results. The user is responsible for the results. The user is responsible for the results.

Data Accuracy: Hydrographic survey data is subject to change due to several factors including but not limited to changing water levels, sedimentation, and changes in channel conditions. The user is responsible for the results. The user is responsible for the results. The user is responsible for the results. The user is responsible for the results.

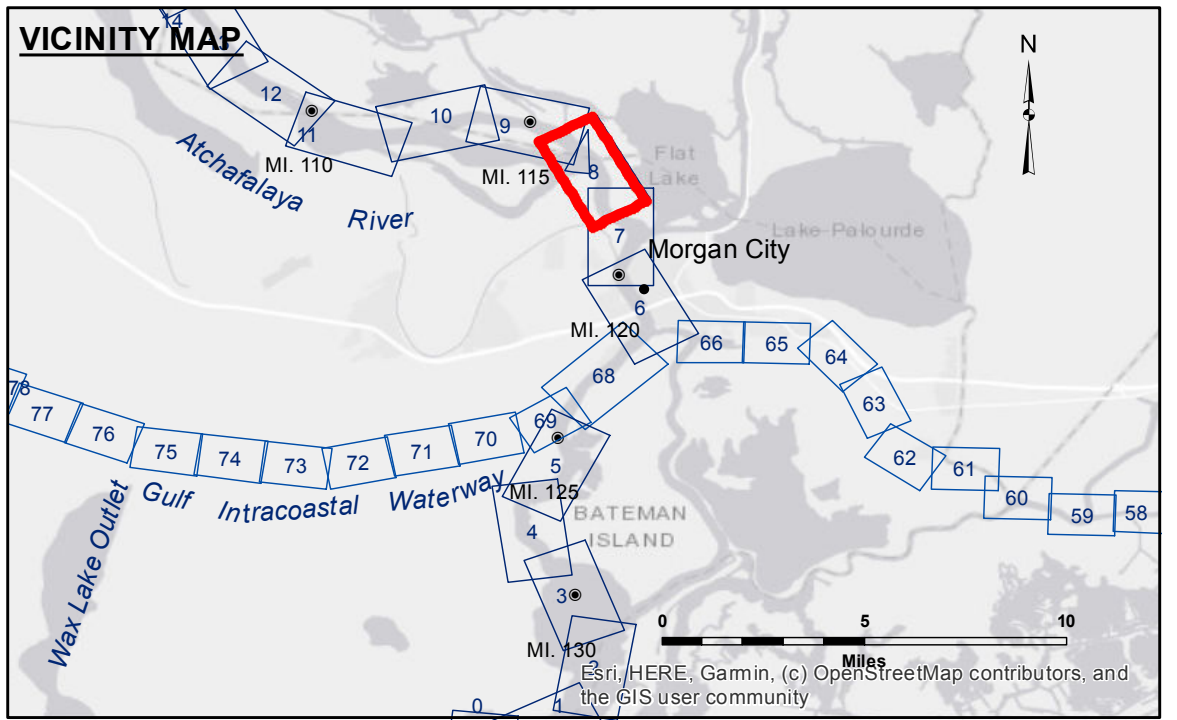
Accession: The United States Government furnishes these data and the recipient accepts and uses them with the express understanding that they are not to be used for any purpose other than that for which they were prepared, and that the user is responsible for the results. The user is responsible for the results. The user is responsible for the results. The user is responsible for the results.

Distribution Liability: The data represents the results of data collection/processing for a specific US Army Corps of Engineers project. The data is not to be used for any purpose other than that for which it was prepared. The user is responsible for the results. The user is responsible for the results. The user is responsible for the results. The user is responsible for the results.

Data Accuracy: Hydrographic survey data is subject to change due to several factors including but not limited to changing water levels, sedimentation, and changes in channel conditions. The user is responsible for the results. The user is responsible for the results. The user is responsible for the results. The user is responsible for the results.

U.S. ARMY CORPS OF ENGINEERS NEW ORLEANS DISTRICT	
Submitted By:	RYLAND/HOSHMAN
Recommended By:	AO
Approved By:	AO

**ATCHAFALAYA RIVER
STOUTS PASS
AS_08_STP_20200611_CS_POSTSTORM
11 June 2020**



LEGEND	
--- Federal Navigation Channel	○ Cable Area
— Federal Navigation Center Line	□ Placement Area
— As-built Pipeline/Cable	□ Anchorage Area
..... Unconfirmed Pipeline/Cable	⊗ Obstruction Point
— Project Depth Contour	✶ Wrecks-Submerged
□ Borrow Area	★ Beacon, General
● Shoalest Sounding**	◆ Red Navigation Buoy
○ -10' and above	◆ Green Navigation Buoy
□ -10' to -12'	
□ -12' to -15'	
□ -15' to -18'	
□ -18' to -20'	
□ -20' and below	

MC VRN: 9.4 AT MM 115

Gage Reading: CALM
 Sea Conditions: M/V OB 189
 Vessel Name: CONDITION
 Survey Type: HIGH
 Sounding Frequency***: HIGH

Vertical Datum: 2010 Aerial Photography data source: NAIP. 1998 DOQQ imagery shown in green from USGS.

Reference is N.O.A.A. Navigation Chart No. 11355.

*** Shoalest Sounding per Quarter per Reach.

Horizontal Coordinate System: North American Datum of 1983 (NAD83), projected to the State Plane Coordinate System (SPCS), Louisiana South Zone. Distance units in U.S. Survey Feet.

Vertical Datum: Soundings are shown in feet and indicate depths below Mean Low Gulf Datum (MLG).

The location of navigation aids are based on and provided by the U.S. Coast Guard.

2010 Aerial Photography data source: NAIP. 1998 DOQQ imagery shown in green from USGS.

Reference is N.O.A.A. Navigation Chart No. 11355.

*** Shoalest Sounding per Quarter per Reach.

Horizontal Coordinate System: North American Datum of 1983 (NAD83), projected to the State Plane Coordinate System (SPCS), Louisiana South Zone. Distance units in U.S. Survey Feet.

Vertical Datum: Soundings are shown in feet and indicate depths below Mean Low Gulf Datum (MLG).

The location of navigation aids are based on and provided by the U.S. Coast Guard.

2010 Aerial Photography data source: NAIP. 1998 DOQQ imagery shown in green from USGS.

Reference is N.O.A.A. Navigation Chart No. 11355.

*** Shoalest Sounding per Quarter per Reach.

NOTES:

Horizontal Coordinate System: North American Datum of 1983 (NAD83), projected to the State Plane Coordinate System (SPCS), Louisiana South Zone. Distance units in U.S. Survey Feet.

Vertical Datum: Soundings are shown in feet and indicate depths below Mean Low Gulf Datum (MLG).

The location of navigation aids are based on and provided by the U.S. Coast Guard.

2010 Aerial Photography data source: NAIP. 1998 DOQQ imagery shown in green from USGS.

Reference is N.O.A.A. Navigation Chart No. 11355.

*** Shoalest Sounding per Quarter per Reach.

Horizontal Coordinate System: North American Datum of 1983 (NAD83), projected to the State Plane Coordinate System (SPCS), Louisiana South Zone. Distance units in U.S. Survey Feet.

Vertical Datum: Soundings are shown in feet and indicate depths below Mean Low Gulf Datum (MLG).

The location of navigation aids are based on and provided by the U.S. Coast Guard.

2010 Aerial Photography data source: NAIP. 1998 DOQQ imagery shown in green from USGS.

Reference is N.O.A.A. Navigation Chart No. 11355.

*** Shoalest Sounding per Quarter per Reach.

**Sheet
Reference
Number
8 of 66**

Revision Number:
4.1-20191105