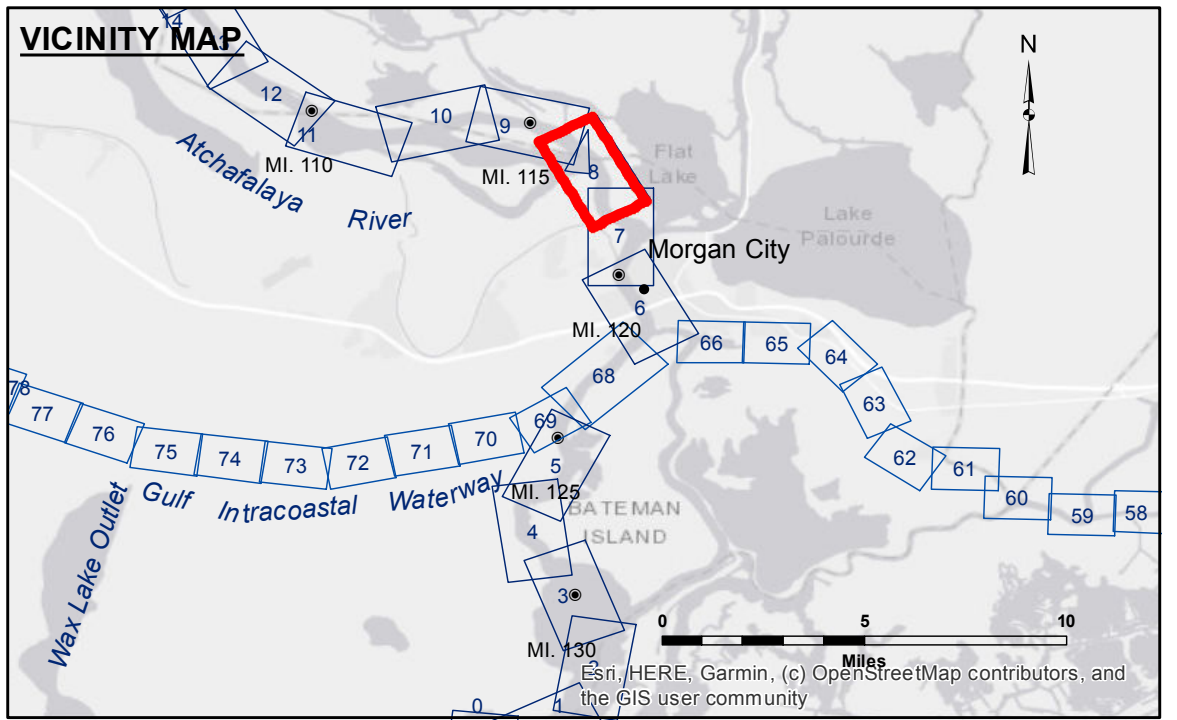


ACCESSORIES
 Access: The United States Government furnishes these data and the recipient accepts and uses them with the express understanding that the data are not to be used for any purpose other than that for which they were originally prepared. The user is responsible for the results of any use of the data for other than its intended purpose.
 Distribution Liability: The data represents the results of data collection processing for a specific US Army Corps of Engineers project. The data is not to be used for any purpose other than that for which it was originally prepared. The user is responsible for the results of any use of the data for other than its intended purpose.
 Data: Contaminated Hydrographic survey data is subject to change due to several factors including but not limited to dredging, sedimentation, and changes in the hydrographical conditions when developed after the date of the survey. The information depicted on this map represents the results of a survey conducted on the date indicated. The information is considered to represent the general condition existing at that time.

U.S. ARMY CORPS OF ENGINEERS NEW ORLEANS DISTRICT	
Submitted:	Surveyed By: RYLAND/ADAMS
Recommended:	Plotted By: BD
Approved:	Checked By: AC

**ATCHAFALAYA RIVER
 STOUTS PASS
 AS_08_STP_20210610_AD
 10 June 2021**



LEGEND

--- Federal Navigation Channel	○ Cable Area	□ Borrow Area	□ -10' and above
— Federal Navigation Center Line	□ Placement Area	● Shoalest Sounding**	□ -10' to -12'
— As-built Pipeline/Cable	□ Anchorage Area	☆ Beacon, General	□ -12' to -15'
..... Unconfirmed Pipeline/Cable	⊗ Obstruction Point	◆ Red Navigation Buoy	□ -15' to -18'
— Project Depth Contour	⚓ Wrecks-Submerged	◆ Green Navigation Buoy	□ -18' to -20'
			□ -20' and below

NOTES:

Horizontal Coordinate System:
 North American Datum of 1983 (NAD83), projected to the State Plane Coordinate System (SPCS), Louisiana South Zone. Distance units in U.S. Survey Feet.

Vertical Datum:
 Soundings are shown in feet and indicate depths below Mean Low Gulf Datum (MLG).

The location of navigation aids are base on and provided by the U.S. Coast Guard.

2017 Aerial Photography data source: NAIP, 1998 DOQQ imagery shown in green from USGS.

Reference is N.O.A. Navigation Chart No. 11355.

** Shoalest Sounding per Quarter per Reach.

*** High frequency (200 kHz) survey data represents the first signal return at a sounding location and will include suspended solids, known as "fluff", if present. Low frequency (20 kHz) survey data normally penetrates through this "fluff" layer to depict elevations of consolidated bottom material. Low frequency accuracies may vary depending on channel conditions and fathometer settings.

Gage Reading: MORGAN CITY: 6.29 MLG AVG.
 Sea Conditions: CALM
 Vessel Name: OB-189
 Survey Type: CONDITION
 Sounding Frequency***: HIGH

Feet
 0 500 1,000 1,500 2,000

**Sheet
 Reference
 Number
 8 of 66**