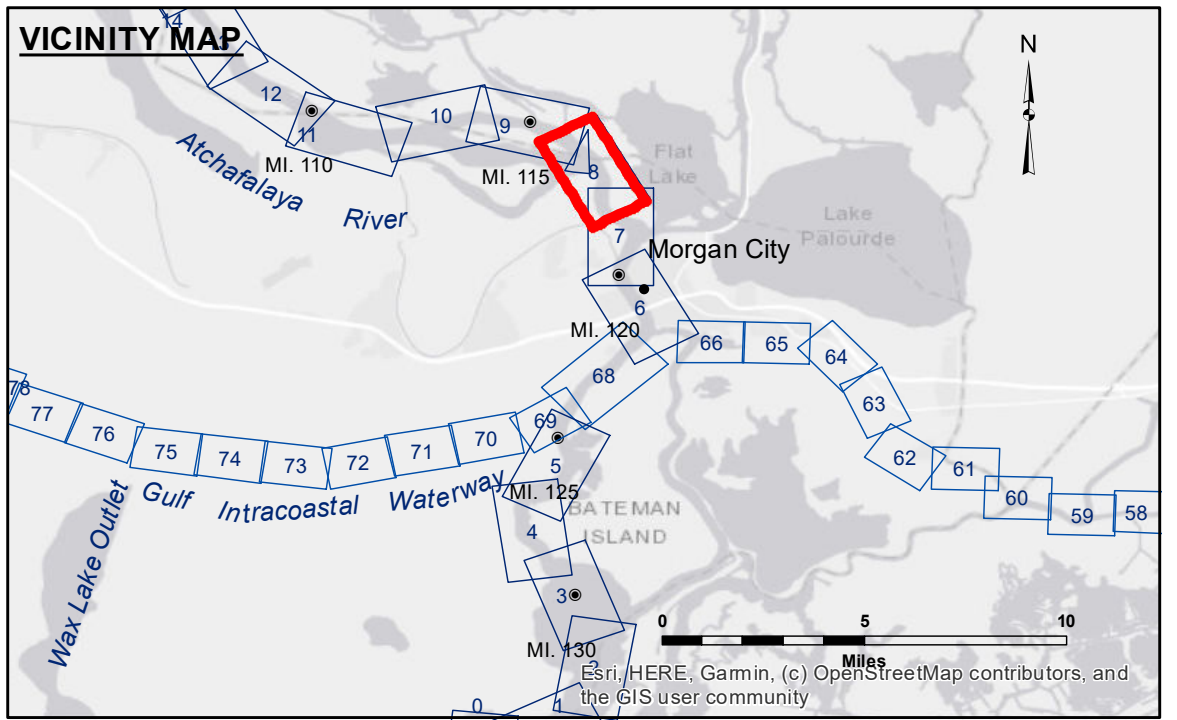


**DISCLAIMER:** The United States Government furnishes these data and the recipient accepts and uses them with the express understanding that the data are not to be used for any purpose other than that for which they were originally collected, and that the data are not to be used for any purpose other than that for which they were originally collected, and that the data are not to be used for any purpose other than that for which they were originally collected.

**Liability:** The data represents the results of data collection/processing for a specific US Army Corps of Engineers project. The user is responsible for the accuracy, completeness, and timeliness of the data. The user is responsible for the accuracy, completeness, and timeliness of the data. The user is responsible for the accuracy, completeness, and timeliness of the data.

**Data Accuracy:** Hydrographic survey data is subject to change due to several factors including but not limited to changing hydrographic conditions which develop after the date of the survey. The user is responsible for the accuracy, completeness, and timeliness of the data. The user is responsible for the accuracy, completeness, and timeliness of the data.

U.S. ARMY CORPS OF ENGINEERS NEW ORLEANS DISTRICT	
Submitted:	Surveyed By: PMS/PS
Recommended:	Plotted By: JHT
Approved:	Checked By: JHT
Chief, Survey Section	
Chief, Waterways Maintenance Section	



**LEGEND**

--- Federal Navigation Channel	○ Cable Area	□ Borrow Area	□ -10' and above
— Federal Navigation Center Line	□ Placement Area	● Shoalest Sounding**	□ -10 to -12
— As-built Pipeline/Cable	□ Anchorage Area	★ Beacon, General	□ -12' to -15'
..... Unconfirmed Pipeline/Cable	⊗ Obstruction Point	◆ Red Navigation Buoy	□ -15' to -18'
— Project Depth Contour	⚓ Wrecks-Submerged	◆ Green Navigation Buoy	□ -18' to -20'
			□ -20' and below

**NOTES:**

Horizontal Coordinate System:  
North American Datum of 1983 (NAD83), projected to the State Plane Coordinate System (SPCS), Louisiana South Zone. Distance units in U.S. Survey Feet.

Vertical Datum:  
Soundings are shown in feet and indicate depths below Mean Low Gulf Datum (MLG).

The location of navigation aids are based on and provided by the U.S. Coast Guard.

2017 Aerial Photography data source: NAIP. 1998 DOQQ imagery shown in green from USGS.

Reference is N.O.A. Navigation Chart No. 11355.

\*\* Shoalest Sounding per Quarter per Reach.

\*\*\* High frequency (200 kHz) survey data represents the first signal return at a sounding location and will include suspended solids, known as "fluff", if present. Low frequency (20 kHz) survey data normally penetrates through this "fluff" layer to depict elevations of consolidated bottom material. Low frequency accuracies may vary depending on channel conditions and fathometer settings.

Gage Reading: VRS RTK NTRIP: 5.0 MLG AVG  
Sea Conditions: CALM  
Vessel Name: OB-167  
Survey Type: CONDITION  
Sounding Frequency\*\*\*: HIGH

Feet  
0 500 1,000 1,500 2,000

**ATCHAFALAYA RIVER  
STOUTS PASS  
AS\_08\_STP\_20220628\_CS  
28 June 2022**

**Sheet  
Reference  
Number  
8 of 66**