

**DISCLAIMER:** The United States Government furnishes these data and the recipient accepts and uses them with the express understanding that they are not to be used for any purpose other than that for which they were prepared, and that the Government makes no warranty, expressed or implied, concerning the accuracy, completeness, reliability, or suitability for any particular purpose of the information furnished. The user is responsible for the results of the application of the data for other than its intended purpose.

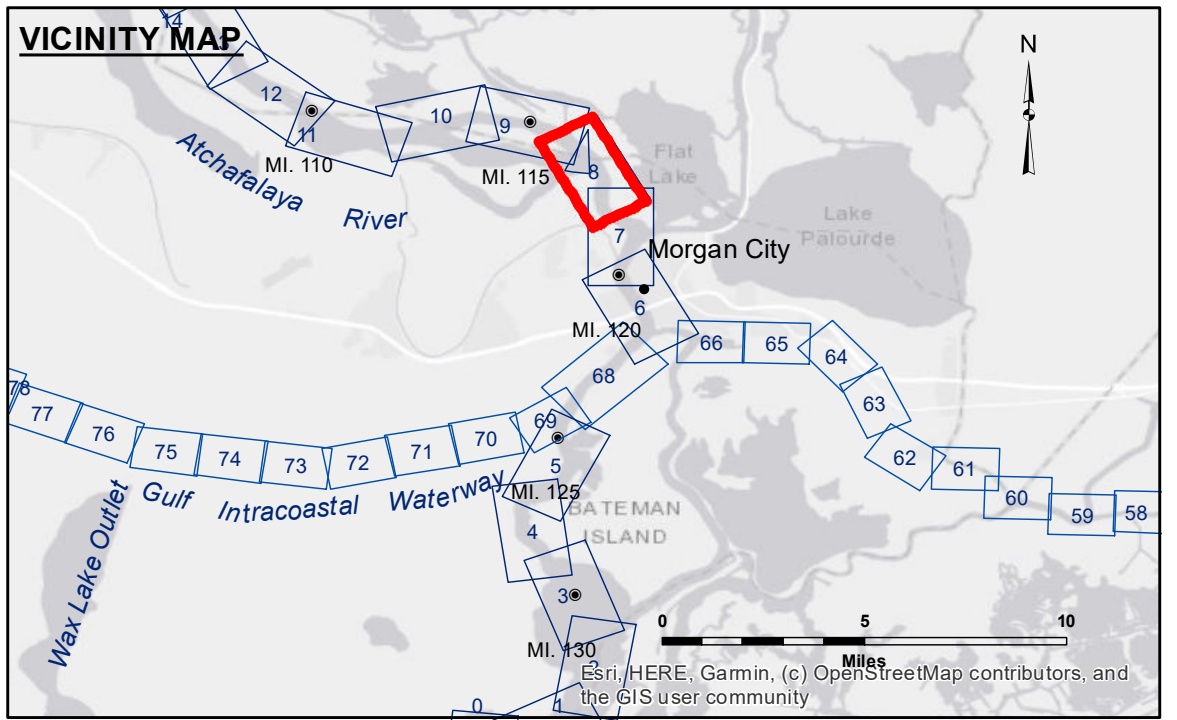
**Distribution Liability:** The data represents the results of data collection/processing for a specific US Army Corps of Engineers project and is only valid for its intended use, context, time and accuracy specifications. The user is responsible for the results of the application of the data for other than its intended purpose.

**Data Constraints:** Hydrographic survey data is subject to change rapidly due to several factors including but not limited to changing hydrographic conditions, sedimentation, and changes in the bathymetry of the waterway. The user is responsible for the results of the application of the data for other than its intended purpose.

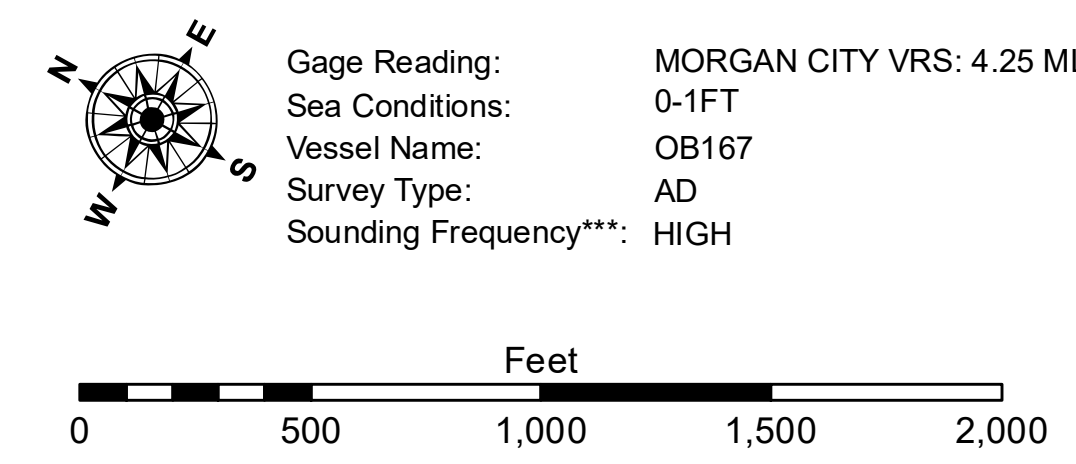
The information depicted on this map represents the results of a survey conducted on the date of the survey and is not intended to represent the general condition existing at that time.

U.S. ARMY CORPS OF ENGINEERS NEW ORLEANS DISTRICT	
Submitted:	Surveyed By: ADAMS/CHAMPINE
Recommended:	Plotted By: JHT
Approved:	Checked By: JHT

**ATCHAFALAYA RIVER  
STOUTS PASS  
AS\_08\_STP\_20240308\_AD  
08 March 2024**



LEGEND			
--- Federal Navigation Channel	○ Cable Area	□ Borrow Area	□ -10' and above
— Federal Navigation Center Line	□ Placement Area	● Shoalest Sounding**	□ -10 to -12'
— As-built Pipeline/Cable	□ Anchorage Area	★ Beacon, General	□ -12' to -15'
..... Unconfirmed Pipeline/Cable	✕ Obstruction Point	◆ Red Navigation Buoy	□ -15' to -18'
— Project Depth Contour	✙ Wrecks-Submerged	◆ Green Navigation Buoy	□ -18' to -20'
			□ -20' and below



**NOTES:**

Horizontal Coordinate System: North American Datum of 1983 (NAD83), projected to the State Plane Coordinate System (SPCS), Louisiana South Zone. Distance units in U.S. Survey Feet.

Vertical Datum: Soundings are shown in feet and indicate depths below Mean Low Gulf Datum (MLG).

The location of navigation aids are based on and provided by the U.S. Coast Guard.

2017 Aerial Photography data source: NAIP. 1998 DOQQ imagery shown in green from USGS.

Reference is N.O.A.A. Navigation Chart No. 11355.

\*\* Shoalest Sounding per Quarter per Reach.

\*\*\* High frequency (200 kHz) survey data represents the first signal return at a sounding location and will include suspended solids, known as "fluff", if present. Low frequency (20 kHz) survey data normally penetrates through this "fluff" layer to depict elevations of consolidated bottom material. Low frequency accuracies may vary depending on channel conditions and fathometer settings.

**Sheet  
Reference  
Number  
8 of 66**