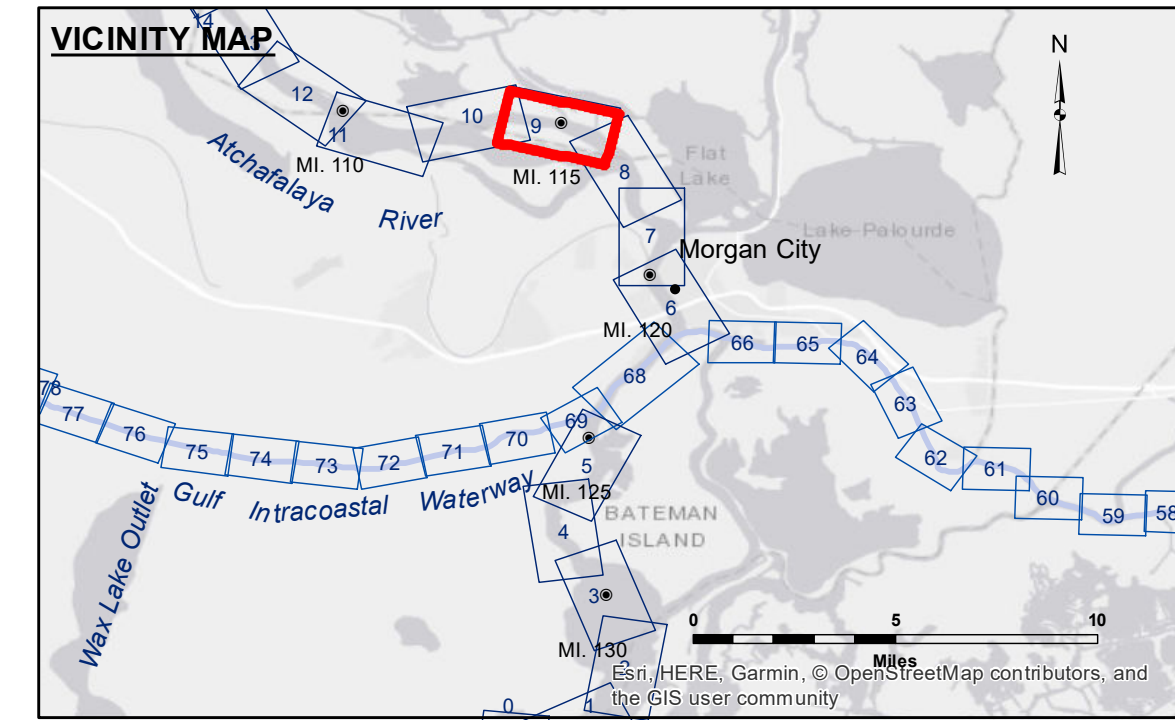


**DISCLAIMER:** The data represents the results of data collection processing for a specific US Army Corps of Engineers project. The data is not intended for use in any other application. The user is responsible for the results and accuracy of the data. The application of the data for other than its intended purpose is not recommended. The user is responsible for the results and accuracy of the data. The application of the data for other than its intended purpose is not recommended. The user is responsible for the results and accuracy of the data. The application of the data for other than its intended purpose is not recommended.

**AGREEMENT:** The United States Government furnishes these data and the recipient accepts and uses them with the express understanding that the data are not intended for use in any other application. The user is responsible for the results and accuracy of the data. The application of the data for other than its intended purpose is not recommended. The user is responsible for the results and accuracy of the data. The application of the data for other than its intended purpose is not recommended.

U.S. ARMY CORPS OF ENGINEERS NEW ORLEANS DISTRICT		
Submitted:	Surveyed By: RYLAND/HOSHMAN	Plotted By: AO
Recommended:	Checked By: AO	Checked By: AO
Approved:	Chief, Waterways Maintenance Section	



**LEGEND**

--- Federal Navigation Channel	○ Cable Area	□ Borrow Area	■ -12' and above
— Federal Navigation Center Line	□ Placement Area	● Shoalest Sounding**	□ -12' and below
— As-built Pipeline/Cable	□ Anchorage Area	★ Beacon, General	
..... Unconfirmed Pipeline/Cable	⊗ Obstruction Point	◆ Red Navigation Buoy	
— Project Depth Contour	✈ Wrecks-Submerged	◆ Green Navigation Buoy	

**Gage Reading:** WF:6.8MC:3.3 USED:3.9 MLG  
**Sea Conditions:** CALM  
**Vessel Name:** M/V OB189  
**Survey Type:** CONDITION  
**Sounding Frequency\*\*\*:** HIGH

**NOTES:**

Horizontal Coordinate System: North American Datum of 1983 (NAD83), projected to the State Plane Coordinate System (SPCS), Louisiana South Zone. Distance units in U.S. Survey Feet.

Vertical Datum: Soundings are shown in feet and indicate depths below Mean Low Gulf Datum (MLG).

The location of navigation aids are base on and provided by the U.S. Coast Guard.

2010 Aerial Photography data source: NAIP, 1998 DOQQ imagery shown in green from USGS.

Reference is N.O.A. Navigation Chart No. 11355.

\*\* Shoalest Sounding per Quarter per Reach.

\*\*\* High frequency (200 kHz) survey data represents the first signal return at a sounding location and will include suspended solids, known as "fluff", if present. Low frequency (20 kHz) survey data normally penetrates through this "fluff" layer to depict elevations of consolidated bottom material. Low frequency accuracies may vary depending on channel conditions and fathometer settings.

**ATCHAFALAYA RIVER  
STOUTS PASS  
AS\_09\_STP\_20180816\_AD  
16 August 2018**

**Sheet  
Reference  
Number  
9 of 66**