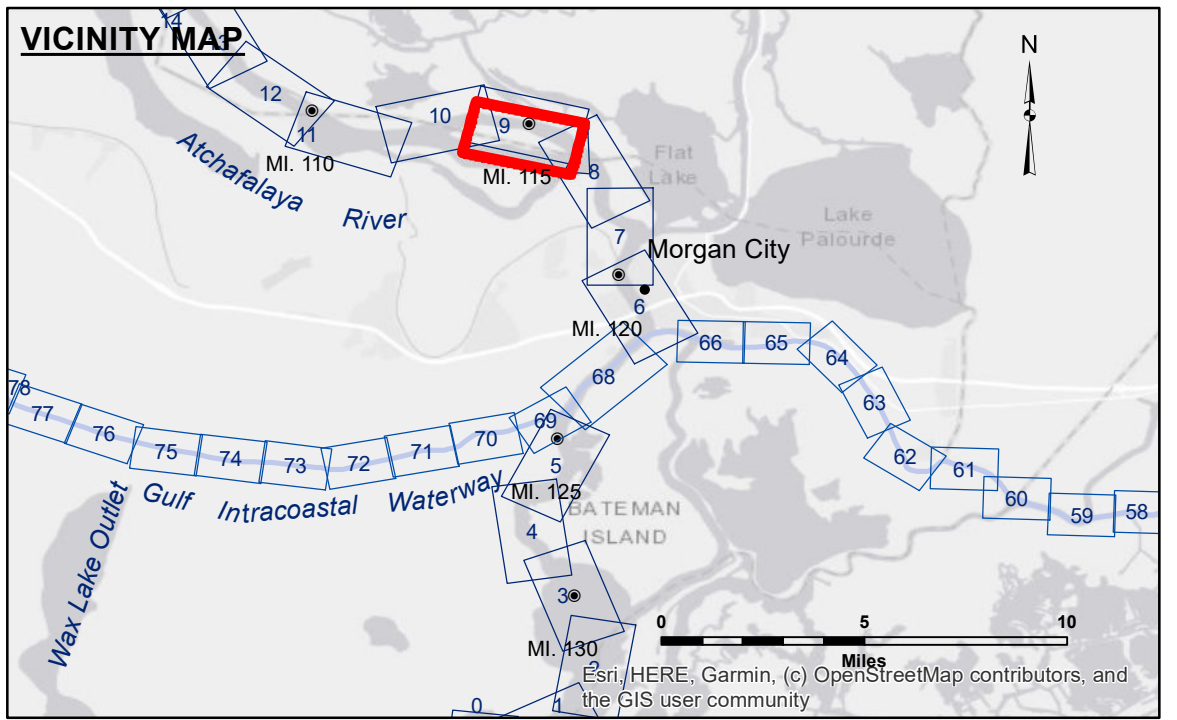


DISCLAIMER
 The information depicted on this map represents the results of a survey conducted by the United States Army Corps of Engineers. The data represents the results of data collection for a specific project and is not intended for general use. It is only valid for its intended use, including time and accuracy specifications. The user is responsible for the results of any application of the data for other than its intended purpose. Data Constants: Hydrographic survey data is subject to change rapidly due to several factors including but not limited to changing hydrological conditions when developing after the date of the survey. The user is responsible for the results of any application of the data for other than its intended purpose. The user is responsible for the results of any application of the data for other than its intended purpose. The user is responsible for the results of any application of the data for other than its intended purpose.

U.S. ARMY CORPS OF ENGINEERS NEW ORLEANS DISTRICT	
Submitted:	Surveyed By: PM,JA
Recommended: Chief, Survey Section	Plotted By: BD
Approved: Chief, Waterways Maintenance Section	Checked By: AD/JH



LEGEND

--- Federal Navigation Channel	○ Cable Area	□ Borrow Area	□ -10' and above
— Federal Navigation Center Line	□ Placement Area	● Shoalest Sounding**	□ -10' to -12'
— As-built Pipeline/Cable	□ Anchorage Area	★ Beacon, General	□ -12' to -15'
..... Unconfirmed Pipeline/Cable	⊗ Obstruction Point	◆ Red Navigation Buoy	□ -15' to -18'
— Project Depth Contour	⚓ Wrecks-Submerged	◆ Green Navigation Buoy	□ -18' to -20'
			□ -20' and below

Gage Reading: VRS RTN: 4.33 MLG AVG.
 Sea Conditions: CALM
 Vessel Name: M/V VALENTOUR
 Survey Type: CONDITION
 Sounding Frequency***: 400KHZ

Feet
 0 500 1,000 1,500 2,000

NOTES:
 Horizontal Coordinate System: North American Datum of 1983 (NAD83), projected to the State Plane Coordinate System (SPCS), Louisiana South Zone. Distance units in U.S. Survey Feet.
 Vertical Datum: Soundings are shown in feet and indicate depths below Mean Low Gulf Datum (MLG).
 The location of navigation aids are base on and provided by the U.S. Coast Guard.
 Reference is N.O.A. Navigation Chart No. 11355.
 ** Shoalest Sounding per Quarter per Reach.
 *** High frequency (200 kHz) survey data represents the first signal return at a sounding location and will include suspended solids, known as "fluff", if present. Low frequency (20 kHz) survey data normally penetrates through this "fluff" layer to depict elevations of consolidated bottom material. Low frequency accuracies may vary depending on channel conditions and fathometer settings.

**ATCHAFALAYA RIVER
 STOUTS PASS
 AS_09_STP_20230208_CS_PRO
 08 February 2023**

**Sheet
 Reference
 Number
 9 of 66**

Revision Number:
4.2-20230420