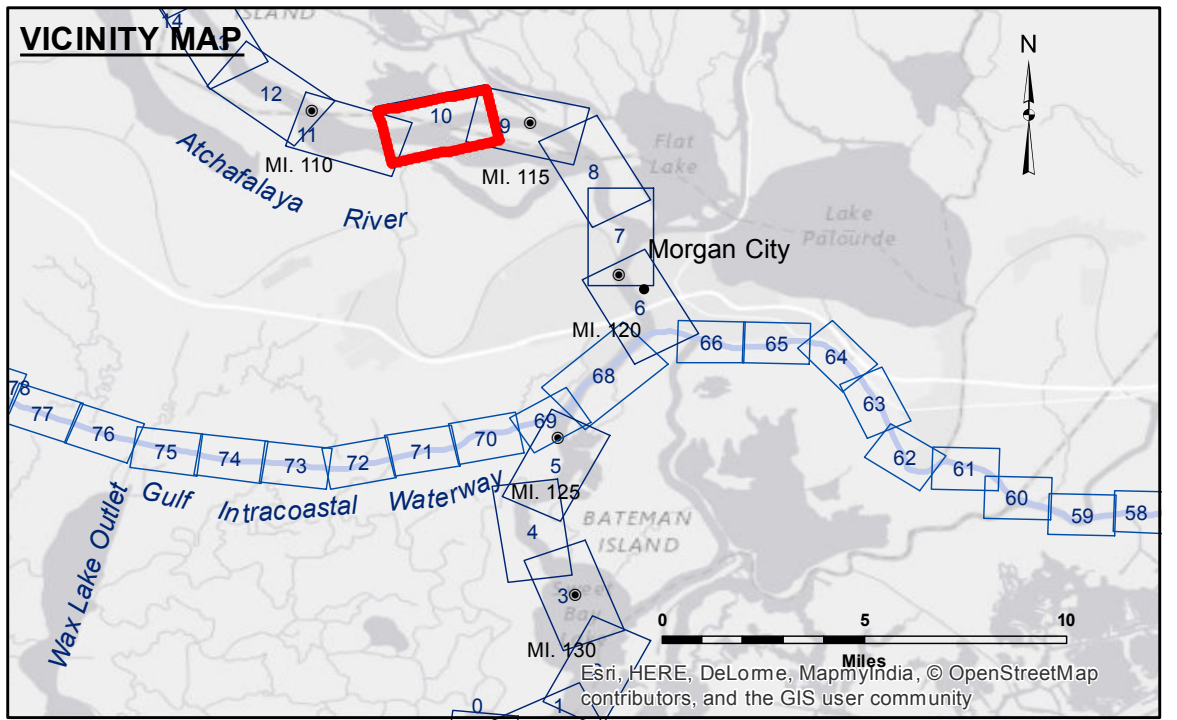


**Access/Availability:** The data represents the results of data collection processing for a specific US Army Corps of Engineers project. The data is only valid for its intended use, control, time and accuracy specifications. The user is responsible for the results of the application of the data for other than its intended purpose.

**Data Contents:** Hydrographic survey data is subject to change rapidly due to several factors including but not limited to dredging, sedimentation, and channel migration. The user is responsible for the hydrographical conditions when developing after the date of the survey. The information depicted on this map represents the results of a survey conducted on the date of the survey. The user is responsible for the general condition existing at that time.

U.S. ARMY CORPS OF ENGINEERS NEW ORLEANS DISTRICT		
Submitted:	Surveyed By: SR, JH	Plotted By: BJD
Recommended: Chief, Survey Section	Checked By: ATO	
Approved: Chief, Waterways Maintenance Section		

**ATCHAFALAYA RIVER**  
**STOUTS PASS TO MYETTE PT**  
**AS\_10\_S2M\_20160719**  
**19 July 2016**



**LEGEND**

--- Federal Navigation Channel	○ Cable Area	□ Borrow Area	■ -12' and above
— Federal Navigation Center Line	□ Placement Area	● Shoalest Sounding**	□ -12' and below
— As-built Pipeline/Cable	□ Anchorage Area	★ Beacon, General	
..... Unconfirmed Pipeline/Cable	⊗ Obstruction Point	♦ Red Navigation Buoy	
— Project Depth Contour	✶ Wrecks-Submerged	◇ Green Navigation Buoy	

Gage Reading: MYETTE PT: 4.6 MLG  
 Sea Conditions: CALM  
 Vessel Name: M/V TECHE  
 Survey Type: CONDITION  
 Sounding Frequency\*\*\*: LOW

**NOTES:**  
 Horizontal Coordinate System: North American Datum of 1983 (NAD83), projected to the State Plane Coordinate System (SPCS), Louisiana South Zone. Distance units in U.S. Survey Feet.  
 Vertical Datum: Soundings are shown in feet and indicate depths below Mean Low Gulf Datum (MLG).  
 The location of navigation aids are based on and provided by the U.S. Coast Guard.  
 2010 Aerial Photography data source: NAIP, 1998 DOQQ imagery shown in green from USGS.  
 Reference is N.O.A. Navigation Chart No. 11355.  
 \*\*\* Shoalest Sounding per Quarter per Reach.  
 \*\* High frequency (200 kHz) survey data represents the first signal return at a sounding location and will include suspended solids, known as "fluff", if present. Low frequency (20 kHz) survey data normally penetrates through this "fluff" layer to depict elevations of consolidated bottom material. Low frequency accuracies may vary depending on channel conditions and fathometer settings.

**Sheet Reference Number**  
**10 of 66**

Revision Number:  
3.8.0-20150202