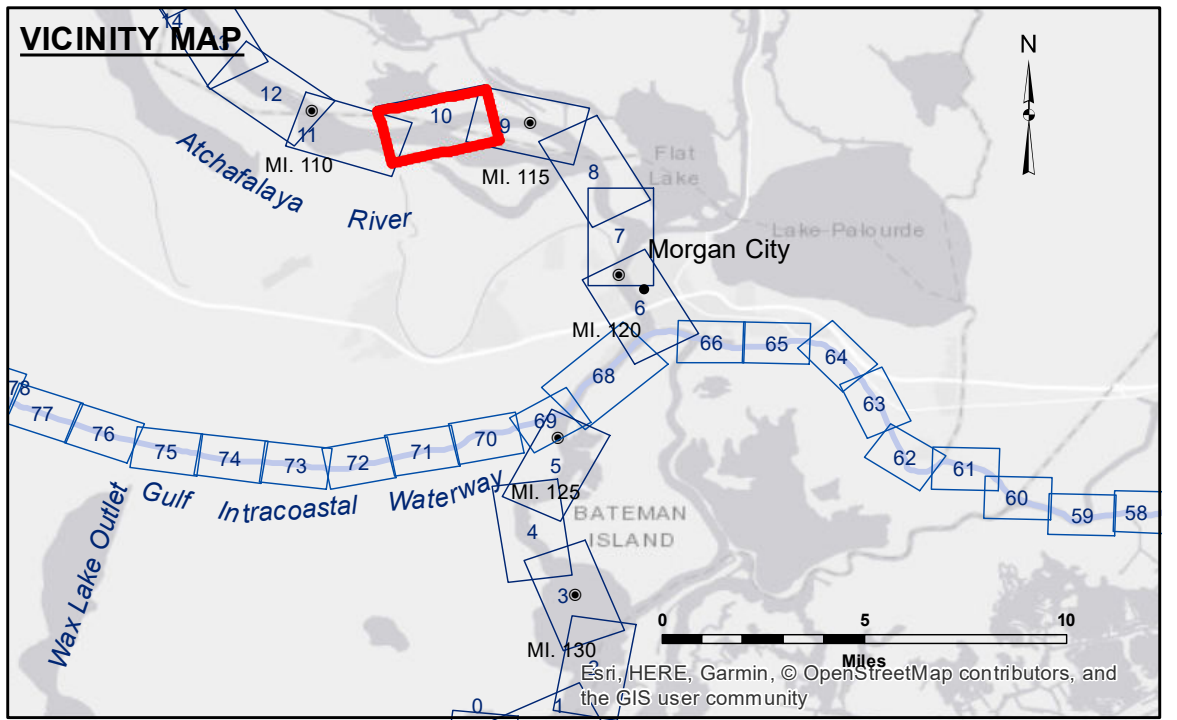


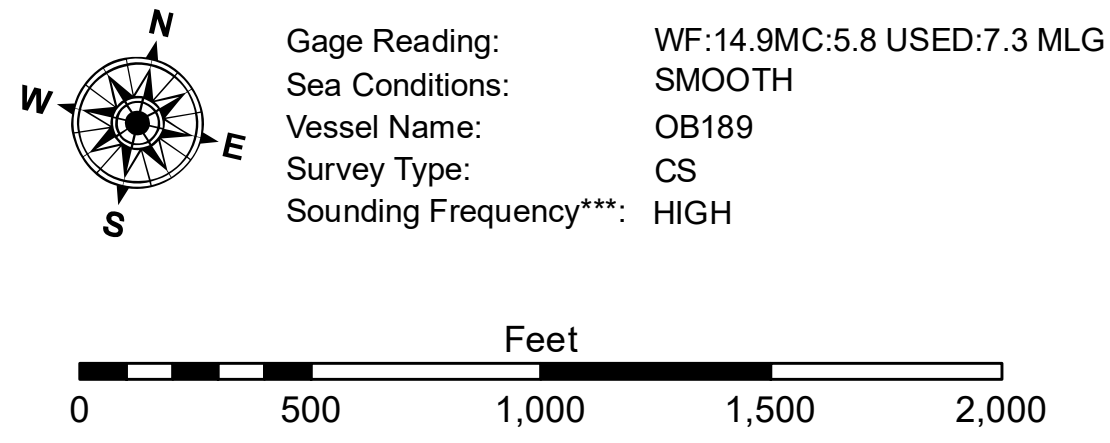
Distribution Liability: The data represents the results of data collection processing for a specific US Army Corps of Engineers project. It is not intended for use in any other project or for any other purpose. The user is responsible for the results. The application of the data for other than its intended purpose may be subject to error. The data is provided as-is and the user assumes all responsibility for its use. The user is responsible for the results of the data.

Disclaimers: Hydrographic survey data is subject to change due to several factors including but not limited to dredging activities, sedimentation, and changes in the bathymetry of the river. The Corps of Engineers does not guarantee the accuracy of the data for any specific use. The user is responsible for the results of the data.

U.S. ARMY CORPS OF ENGINEERS NEW ORLEANS DISTRICT		
Submitted:	Surveyed By: DSJH	Plotted By: AO
Recommended: Chief Survey Section		Checked By: AO
Approved: Chief Waterways Maintenance Section		



LEGEND			
	--- Federal Navigation Channel		○ Cable Area
	— Federal Navigation Center Line		□ Placement Area
	— As-built Pipeline/Cable		● Shoalest Sounding**
 Unconfirmed Pipeline/Cable		☆ Beacon, General
	— Project Depth Contour		◆ Red Navigation Buoy
			◆ Green Navigation Buoy
			⊗ Obstruction Point
			✦ Wrecks-Submerged
			□ Borrow Area
			□ Anchorage Area
			Red: -12' and above White: -12' and below



NOTES:
Horizontal Coordinate System: North American Datum of 1983 (NAD83), projected to the State Plane Coordinate System (SPCS), Louisiana South Zone. Distance units in U.S. Survey Feet.
Vertical Datum: Soundings are shown in feet and indicate depths below Mean Low Gulf Datum (MLG).
The location of navigation aids are based on and provided by the U.S. Coast Guard.
Reference is N.O.A. Navigation Chart No. 11355.
** Shoalest Sounding per Quarter per Reach.
*** High frequency (200 kHz) survey data represents the first signal return at a sounding location and will include suspended solids, known as "fluff", if present. Low frequency (20 kHz) survey data normally penetrates through this "fluff" layer to depict elevations of consolidated bottom material. Low frequency accuracies may vary depending on channel conditions and fathometer settings.

**ATCHAFALAYA RIVER
STOUTS PASS TO MYETTE PT
AS_10_S2M_20190103_CS
03 January 2019**

**Sheet Reference Number
10 of 66**