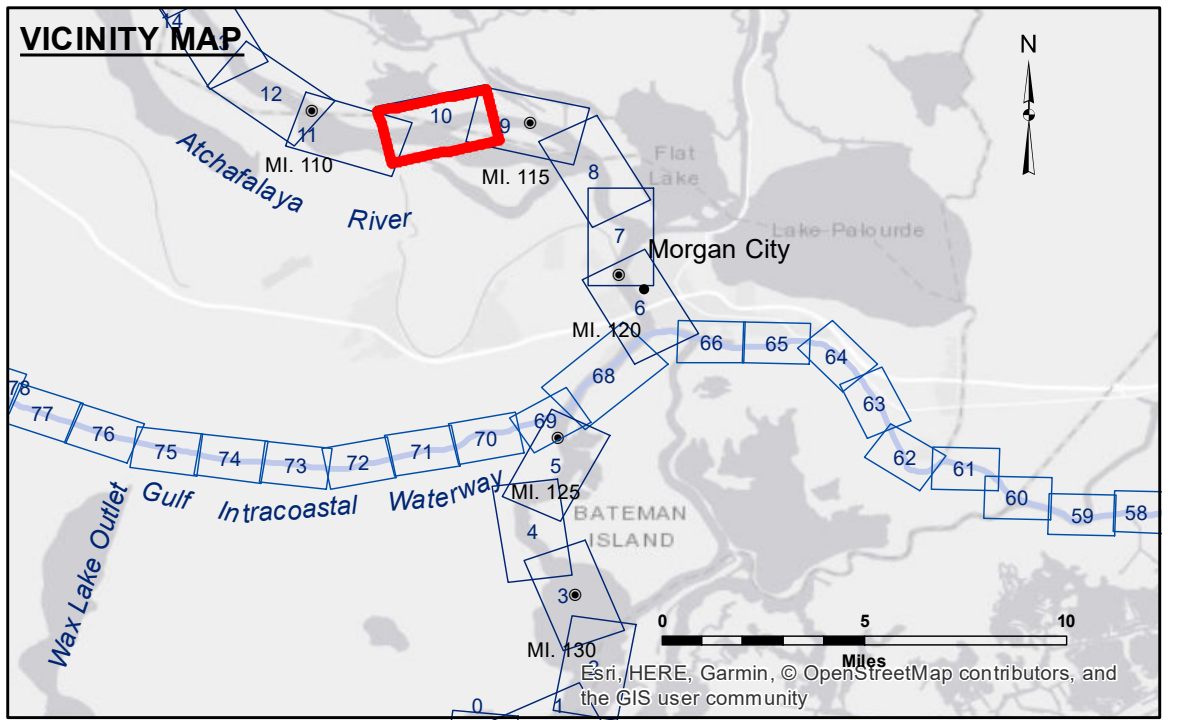


**DISCLAIMER:** The data represents the results of data collection processing for a specific US Army Corps of Engineers project. The data is not intended for use in any other project or for any other purpose. The user is responsible for the results of any use of the data. The application of the data for other than its intended purpose is at the user's risk. The US Army Corps of Engineers does not warrant the accuracy of the data for any other purpose. The information depicted on this map represents the results of a survey conducted on the date of the survey. The information is not intended to be used for any other purpose. The user is responsible for the results of any use of the data. The application of the data for other than its intended purpose is at the user's risk. The US Army Corps of Engineers does not warrant the accuracy of the data for any other purpose.

U.S. ARMY CORPS OF ENGINEERS NEW ORLEANS DISTRICT	
Submitted:	Surveyed By: PM SR
Recommended: Chief Survey Section	Plotted By: BD
Approved: Chief Waterways Maintenance Section	Checked By: AC



**LEGEND**

--- Federal Navigation Channel	○ Cable Area	□ Borrow Area	□ -10' and above
— Federal Navigation Center Line	□ Placement Area	● Shoalest Sounding**	□ -10 to -12
— As-built Pipeline/Cable	□ Anchorage Area	☆ Beacon, General	□ -12' to -15'
..... Unconfirmed Pipeline/Cable	⊗ Obstruction Point	◆ Red Navigation Buoy	□ -15' to -18'
— Project Depth Contour	⚓ Wrecks-Submerged	◆ Green Navigation Buoy	□ -18' to -20'
			□ -20' and below

Gage Reading: BBL WEST: 11.00 MLG AVG.  
 Sea Conditions: CALM  
 Vessel Name: OB-167  
 Survey Type: CONDITION  
 Sounding Frequency\*\*\*: HI

**NOTES:**

Horizontal Coordinate System:  
North American Datum of 1983 (NAD83), projected to the State Plane Coordinate System (SPCS), Louisiana South Zone. Distance units in U.S. Survey Feet.

Vertical Datum:  
Soundings are shown in feet and indicate depths below Mean Low Gulf Datum (MLG).

The location of navigation aids are base on and provided by the U.S. Coast Guard.

2017 Aerial Photography data source: NAIP.

Reference is N.O.A.A. Navigation Chart No. 11355.

\*\*\* Shoalest Sounding per Quarter per Reach.

\*\*\* High frequency (200 kHz) survey data represents the first signal return at a sounding location and will include suspended solids, known as "fluff", if present. Low frequency (20 kHz) survey data normally penetrates through this "fluff" layer to depict elevations of consolidated bottom material. Low frequency accuracies may vary depending on channel conditions and fathometer settings.

**ATCHAFALAYA RIVER**  
**STOUTS PASS TO MYETTE PT**  
**AS\_10\_S2M\_20190605\_CS**  
**05 June 2019**

**Sheet Reference Number**  
**10 of 66**