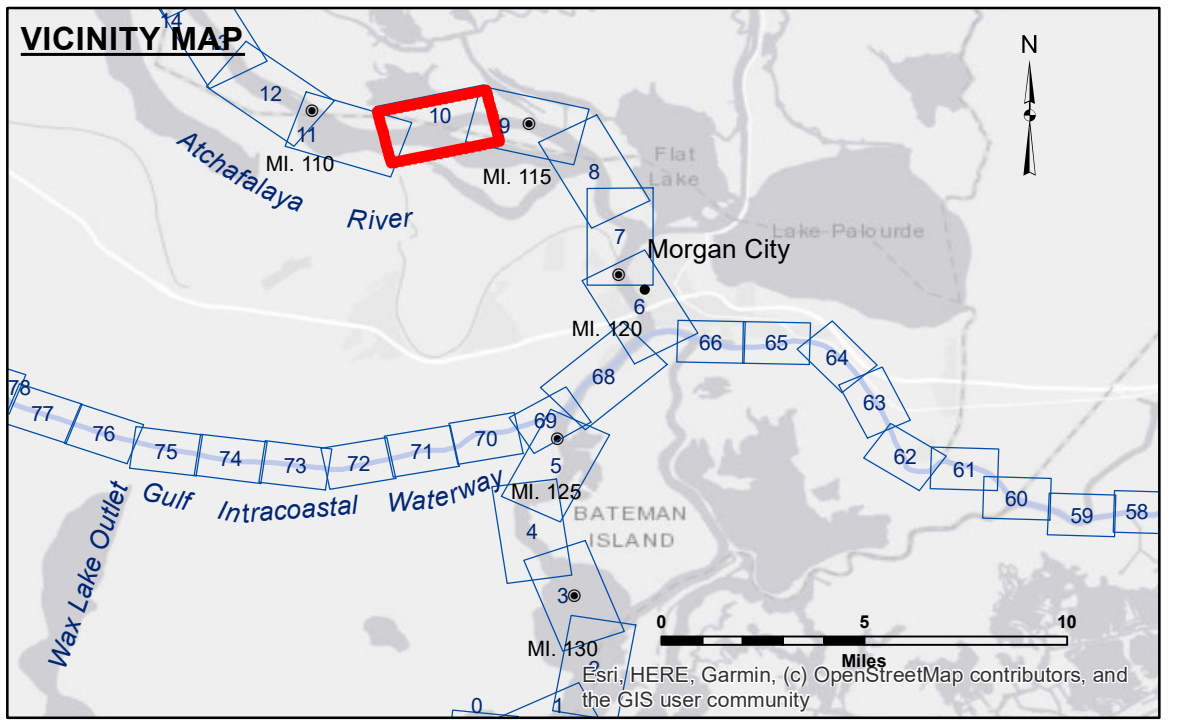


DISCLAIMER
 The information depicted on this map represents the results of a survey conducted on the general condition existing at that time. The user is responsible for the accuracy, completeness, and reliability of the data for other than its intended purpose. The user is responsible for the results of the application of the data for other than its intended purpose. Data Constants: Hydrographic survey data is subject to change rapidly due to several factors including but not limited to changing hydrographical conditions when developed after the date of the survey. The user is responsible for the results of the application of the data for other than its intended purpose. The user is responsible for the results of the application of the data for other than its intended purpose. The user is responsible for the results of the application of the data for other than its intended purpose.

U.S. ARMY CORPS OF ENGINEERS NEW ORLEANS DISTRICT		
Submitted:	Surveyed By: SPPM	Plotted By: AO
Recommended: Chief Survey Station	Checked By: AO	Checked By: AO
Approved:	Chief Waterways Maintenance Section	



LEGEND

--- Federal Navigation Channel	○ Cable Area	□ Borrow Area	□ -10' and above
— Federal Navigation Center Line	□ Placement Area	● Shoalest Sounding**	□ -10 to -12
— As-built Pipeline/Cable	□ Anchorage Area	☆ Beacon, General	□ -12' to -15'
..... Unconfirmed Pipeline/Cable	⊗ Obstruction Point	♦ Red Navigation Buoy	□ -15' to -18'
— Project Depth Contour	⚓ Wrecks-Submerged	♦ Green Navigation Buoy	□ -18' to -20'
			□ -20' and below

Gage Reading: VRS BBL: 9.0 MLG AVG
 Sea Conditions: CALM
 Vessel Name: OB-167
 Survey Type: CONDITION
 Sounding Frequency***: LOW

NOTES:
 Horizontal Coordinate System: North American Datum of 1983 (NAD83), projected to the State Plane Coordinate System (SPCS), Louisiana South Zone. Distance units in U.S. Survey Feet.
 Vertical Datum: Soundings are shown in feet and indicate depths below Mean Low Gulf Datum (MLG).
 The location of navigation aids are base on and provided by the U.S. Coast Guard.
 2010 Aerial Photography data source: NAIP 1998 DOQQ imagery shown in green from USGS.
 Reference is N.O.A. Navigation Chart No. 11355.
 ** Shoalest Sounding per Quarter per Reach.
 *** High frequency (200 kHz) survey data represents the first signal return at a sounding location and will include suspended solids, known as "fluff", if present. Low frequency (20 kHz) survey data normally penetrates through this "fluff" layer to depict elevations of consolidated bottom material. Low frequency accuracies may vary depending on channel conditions and fathometer settings.

ATCHAFALAYA RIVER
STOUTS PASS TO MYETTE PT
AS_10_S2M_20200130_CS
30 January 2020

Sheet Reference Number
10 of 66