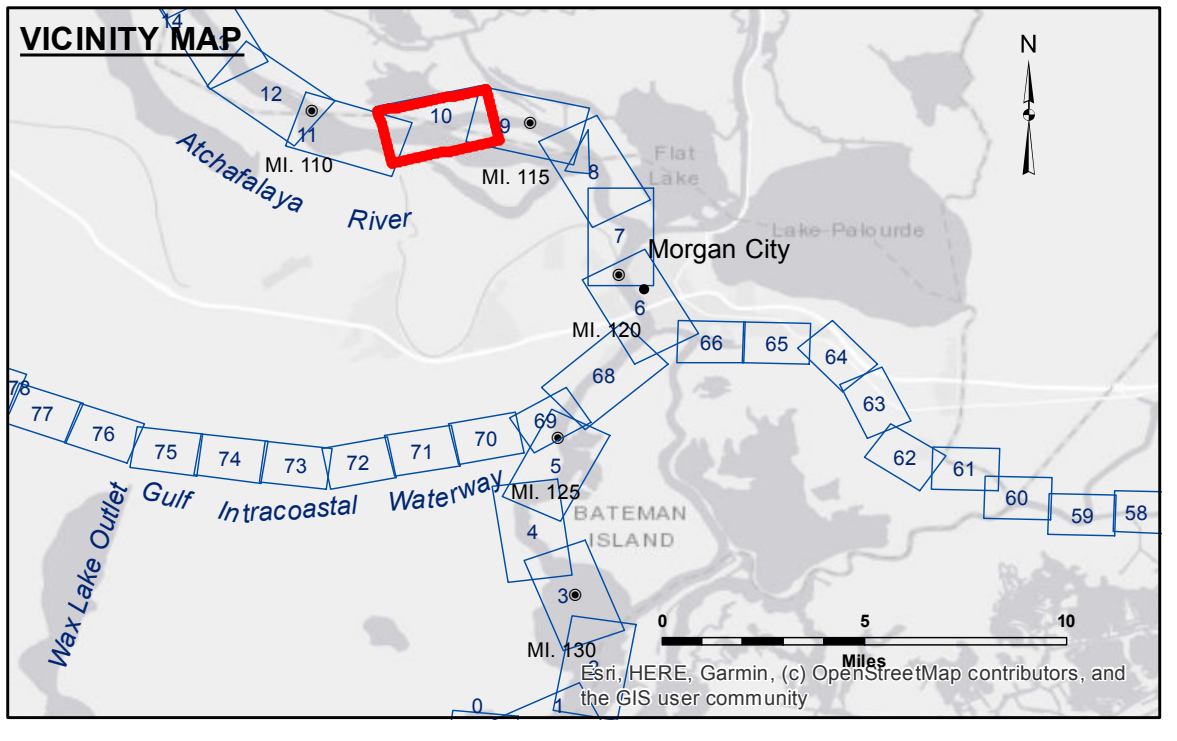


Access/Availability: The data represents the results of data collection processing for a specific US Army Corps of Engineers project and is only valid for its intended use, control, time and accuracy specifications. The user is responsible for the results. The application of the data for other than its intended purpose. Data Contaminants: Hydrographic survey data is subject to change rapidly due to several factors including but not limited to dredging, sedimentation, and other factors. The user is responsible for the results of the hydrographic conditions when developed after the date of the data collection. Product maintainers should not rely solely upon it.

U.S. ARMY CORPS OF ENGINEERS NEW ORLEANS DISTRICT	
Submitted:	Surveyed By: SPPM
Recommended: Chief Survey Section	Planned By: BD
Approved: Chief Waterways Maintenance Section	Checked By: AC



LEGEND

--- Federal Navigation Channel	○ Cable Area	□ Borrow Area	□ -10' and above
— Federal Navigation Center Line	□ Placement Area	● Shoalest Sounding**	□ -10 to -12
— As-built Pipeline/Cable	□ Anchorage Area	★ Beacon, General	□ -12' to -15'
..... Unconfirmed Pipeline/Cable	✕ Obstruction Point	♦ Red Navigation Buoy	□ -15' to -18'
— Project Depth Contour	✙ Wrecks-Submerged	♦ Green Navigation Buoy	□ -18' to -20'
			□ -20' and below

Gage Reading: NTRIP RTK VRS: 8.1 MLG AVG.
 Sea Conditions: CALM
 Vessel Name: OB-167
 Survey Type: CONDITION
 Sounding Frequency***: LOW

NOTES:
 Horizontal Coordinate System: North American Datum of 1983 (NAD83), projected to the State Plane Coordinate System (SPCS), Louisiana South Zone. Distance units in U.S. Survey Feet.
 Vertical Datum: Soundings are shown in feet and indicate depths below Mean Low Gulf Datum (MLG).
 The location of navigation aids are base on and provided by the U.S. Coast Guard.
 2017 Aerial Photography data source: NAIP: 1998 DOQQ imagery shown in green from USGS.
 Reference is N.O.A.A. Navigation Chart No. 11355.
 *** Shoalest Sounding per Quarter per Reach.
 **** High frequency (200 kHz) survey data represents the first signal return at a sounding location and will include suspended solids, known as "fluff", if present. Low frequency (20 kHz) survey data normally penetrates through this "fluff" layer to depict elevations of consolidated bottom material. Low frequency accuracies may vary depending on channel conditions and fathometer settings.

**ATCHAFALAYA RIVER
 STOUTS PASS TO MYETTE PT
 AS_10_S2M_20210429_CS
 29 April 2021**

**Sheet
 Reference
 Number
 10 of 66**