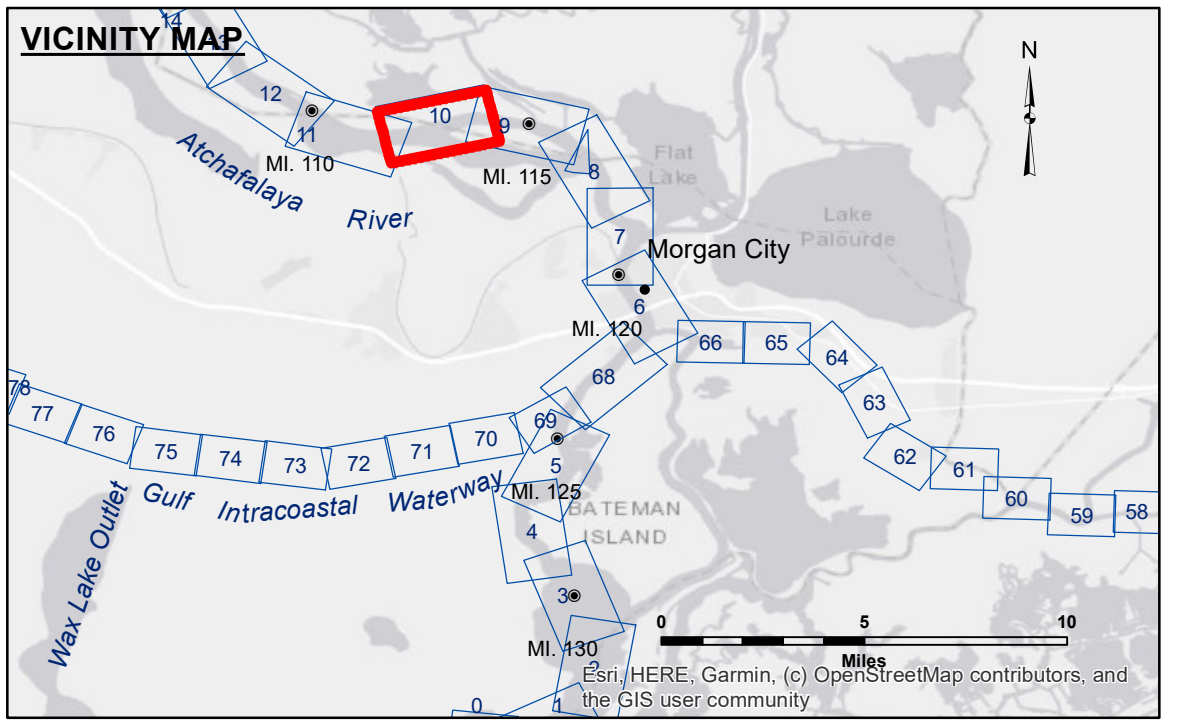


**DISCLAIMER**  
 The information depicted on this map represents the results of a survey conducted by the United States Army Corps of Engineers. The data represents the results of data collection/processing for a specific US Army Corps of Engineers project. It is only valid for its intended use, control, time and accuracy specifications. The user is responsible for the results of any application of the data for other than its intended purpose.  
 Data Constants: Hydrographic survey data is subject to change rapidly due to several factors including but not limited to changing hydrographic conditions when developing after the date of the survey. The US Army Corps of Engineers accepts no responsibility for changes in the hydrographic conditions when developing after the date of the survey. Product maintainers should not rely solely upon this information.

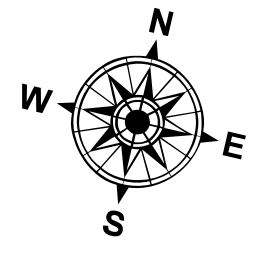
U.S. ARMY CORPS OF ENGINEERS NEW ORLEANS DISTRICT		
Submitted:	Surveyed By: RYLAND/SIMMONS	Placed By: BD
Recommended:	Chief, Survey Section	Checked By: AD/JH
Approved:	Chief, Waterways Maintenance Section	

**ATCHAFALAYA RIVER**  
**STOUTS PASS TO MYETTE PT**  
**AS\_10\_S2M\_20230313\_CS**  
**13 March 2023**

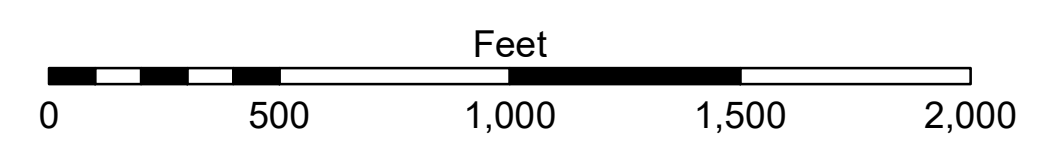


**LEGEND**

--- Federal Navigation Channel	○ Cable Area	□ Borrow Area	□ -10' and above
— Federal Navigation Center Line	□ Placement Area	● Shoalest Sounding**	□ -10 to -12'
— As-built Pipeline/Cable	□ Anchorage Area	★ Beacon, General	□ -12' to -15'
..... Unconfirmed Pipeline/Cable	⊗ Obstruction Point	♦ Red Navigation Buoy	□ -15' to -18'
— Project Depth Contour	⚓ Wrecks-Submerged	◇ Green Navigation Buoy	□ -18' to -20'
			□ -20' and below



Gage Reading: VRS: 6.31 MLG AVG.  
 Sea Conditions: CALM  
 Vessel Name: OB-189  
 Survey Type: CS  
 Sounding Frequency\*\*\*: HIGH



**NOTES:**  
 Horizontal Coordinate System:  
 North American Datum of 1983 (NAD83), projected to the State Plane Coordinate System (SPCS), Louisiana South Zone. Distance units in U.S. Survey Feet.  
 Vertical Datum:  
 Soundings are shown in feet and indicate depths below Mean Low Gulf Datum (MLG).  
 The location of navigation aids are base on and provided by the U.S. Coast Guard.  
 2017 Aerial Photography data source: NAIP, 1998 DOQQ imagery shown in green from USGS.  
 Reference is N.O.A.A. Navigation Chart No. 11355.  
 \*\* Shoalest Sounding per Quarter per Reach.  
 \*\*\* High frequency (200 kHz) survey data represents the first signal return at a sounding location and will include suspended solids, known as "fluff", if present. Low frequency (20 kHz) survey data normally penetrates through this "fluff" layer to depict elevations of consolidated bottom material. Low frequency accuracies may vary depending on channel conditions and fathometer settings.