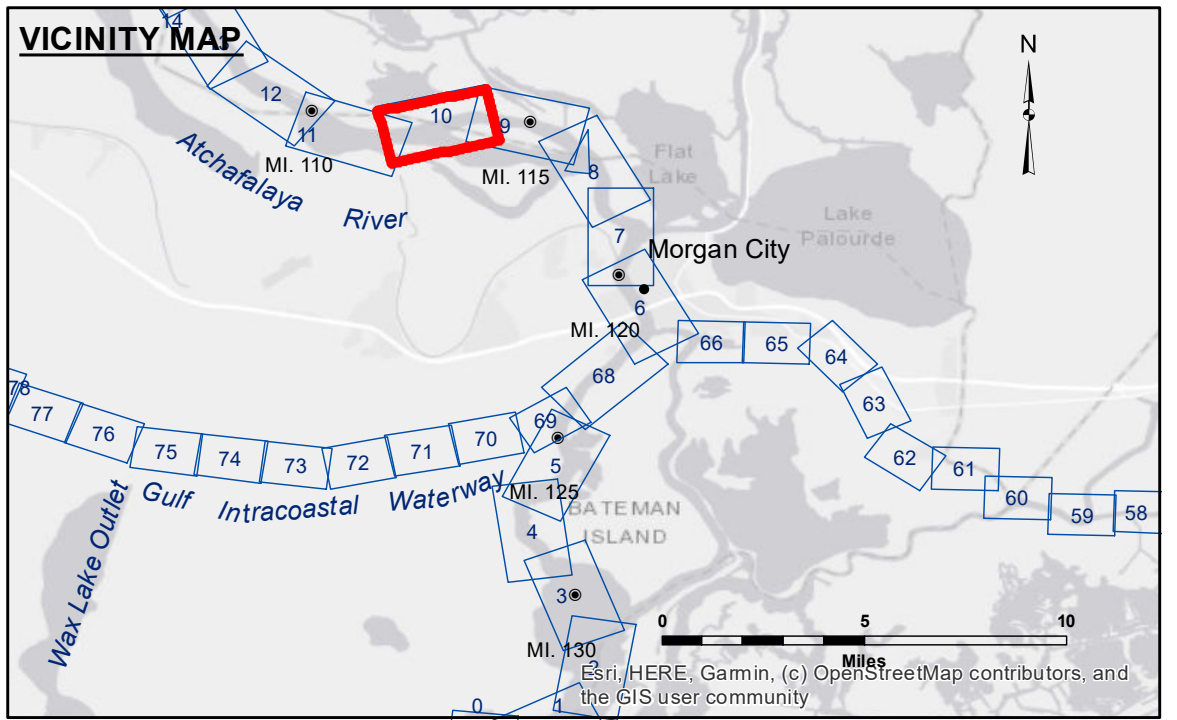


DISCLAIMER
The data represents the results of data collection/processing for a specific US Army Corps of Engineers project. The data is not intended to be used for any other purpose. The user is responsible for the accuracy, timeliness, and accuracy of the data. The user should verify the data for their intended purpose.
Data Cautions: Hydrographic survey data is subject to change rapidly due to several factors including, but not limited to, changing bathymetry, shifting sediment, and changing hydrographic conditions which develop after the date of the survey. Hydrographic data is not intended to be used for navigation purposes. The user is advised to consult with the local Hydrographic Office for the latest data and to use the data at their own risk.

AGENCY STATEMENT
The United States Government furnishes these data and the recipient accepts and uses them with the express understanding that the Government makes no warranty, expressed or implied, concerning the accuracy, completeness, reliability, suitability or availability for any particular purpose of the information furnished. The recipient may not transmit, retransmit, or otherwise disseminate this information for any purpose other than that for which it was provided. The recipient may not transfer the information provided to other users without the written consent of the US Army Corps of Engineers. The recipient may not transfer the information provided to other users without the written consent of the US Army Corps of Engineers. The recipient may not transfer the information provided to other users without the written consent of the US Army Corps of Engineers. The recipient may not transfer the information provided to other users without the written consent of the US Army Corps of Engineers.

Submitted:	SP-US	Reviewed By:	BD
Recommended:	Chief Survey Section	Checked By:	AOJH
Approved:	Chief Waterways Maintenance Section		

ATCHAFALAYA RIVER
STOUTS PASS TO MYETTE PT
AS_10_S2M_20231113_CS
13 November 2023



LEGEND

Federal Navigation Channel	Cable Area	Borrow Area	-10' and above
Federal Navigation Center Line	Placement Area	Shoalest Sounding**	-10 to -12
As-built Pipeline/Cable	Anchorage Area	Beacon, General	-12' to -15'
Unconfirmed Pipeline/Cable	Obstruction Point	Red Navigation Buoy	-15' to -18'
Project Depth Contour	Wrecks-Submerged	Green Navigation Buoy	-18' to -20'
			-20' and below

NOTES:

Horizontal Coordinate System: North American Datum of 1983 (NAD83), projected to the State Plane Coordinate System (SPCS), Louisiana South Zone. Distance units in U.S. Survey Feet.

Vertical Datum: Soundings are shown in feet and indicate depths below Mean Low Gulf Datum (MLG).

The location of navigation aids are based on and provided by the U.S. Coast Guard. Reference is N.O.A.A. Navigation Chart No. 11355.

** Shoalest Sounding per Quarter per Reach.

*** High frequency (200 kHz) survey data represents the first signal return at a sounding location and will include suspended solids, known as "fluff", if present. Low frequency (20 kHz) survey data normally penetrates through this "fluff" layer to depict elevations of consolidated bottom material. Low frequency accuracies may vary depending on channel conditions and fathometer settings.

Gage Reading: MORGAN CITY VRN: 2.38 MLG AVG.
Sea Conditions: CALM
Vessel Name: OB-167
Survey Type: CONDITION
Sounding Frequency***: HIGH