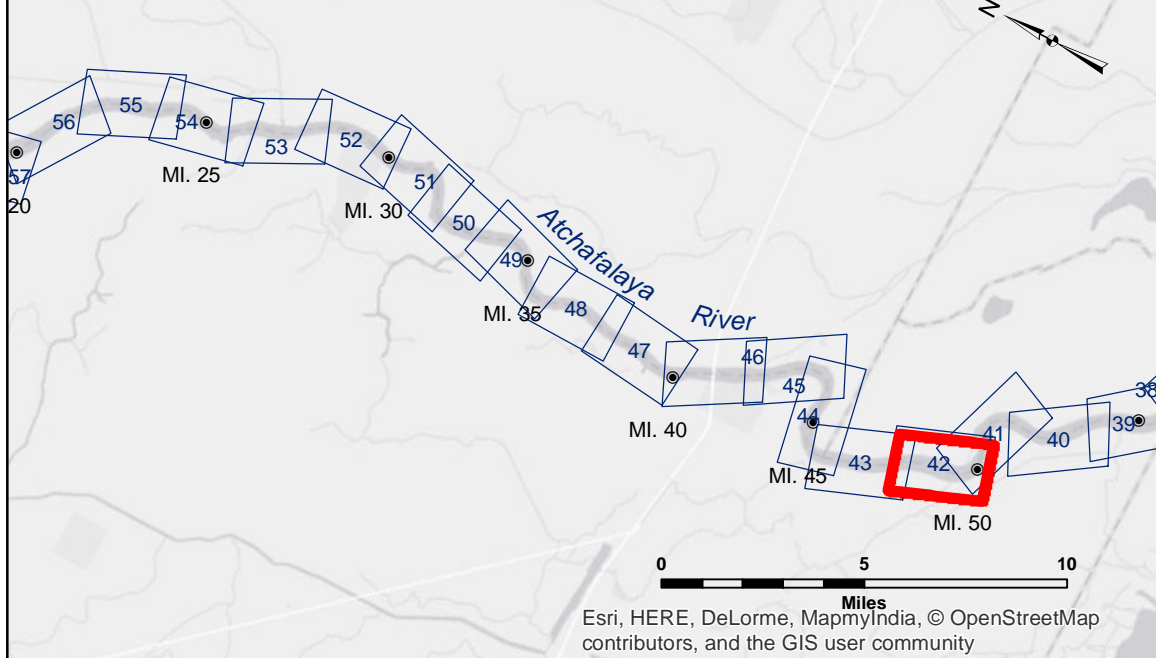
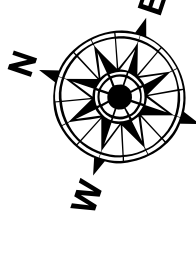


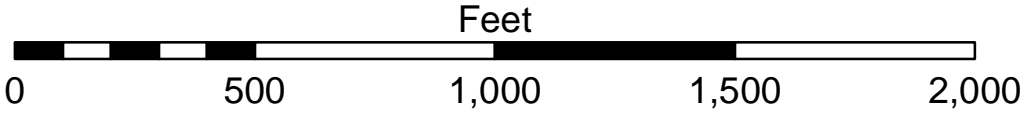
VICINITY MAP



LEGEND			
--- Federal Navigation Channel	○ Cable Area	□ Borrow Area	■ -12' and above
— Federal Navigation Center Line	□ Placement Area	● Shoalest Sounding**	□ -12' and below
— As-built Pipeline/Cable	□ Anchorage Area	★ Beacon, General	
..... Unconfirmed Pipeline/Cable	⊗ Obstruction Point	◆ Red Navigation Buoy	
— Project Depth Contour	✶ Wrecks-Submerged	◆ Green Navigation Buoy	



Gage Reading: KR: 5.68 WB: 5.14 MM50: 5.3 MLG
Sea Conditions: CALM
Vessel Name: OB-167
Survey Type: CONDITION
Sounding Frequency***: LOW



NOTES:
Horizontal Coordinate System:
North American Datum of 1983 (NAD83), projected to the State Plane
Coordinate System (SPCS), Louisiana South Zone. Distance units in U.S. Survey Feet.
Vertical Datum:
Soundings are shown in feet and indicate depths below Mean Low Gulf Datum (MLG).
The location of navigation aids are base on and provided by the U.S. Coast Guard.
Reference is N.O.A.A. Navigation Chart No. 11355.
*** Shoalest Sounding per Quarter per Reach.
2010 Aerial Photography data source: NAIP. 1998 DOQQ imagery shown in green from USGS.
The information depicted on this map represents the results of a survey conducted by the U.S. Army Corps of Engineers. It is not to be used for navigation or other purposes without the approval of the District Engineer. The user is responsible for the results of any use of this information. The application of this data for other than its intended purpose is not warranted. The data represents the results of a survey conducted by the U.S. Army Corps of Engineers. It is not to be used for navigation or other purposes without the approval of the District Engineer. The user is responsible for the results of any use of this information. The application of this data for other than its intended purpose is not warranted.

U.S. ARMY CORPS OF ENGINEERS NEW ORLEANS DISTRICT			
Submitted:	Surveyed By: SP:PM	Plotted By: ATO	Checked By: ML
Recommended:	Chief, Survey Section		
Approved:	Chief, Waterways Maintenance Section		

ATCHAFALAYA RIVER
WHISKEY BAY TO KROTZ SPRINGS
AS_42_W2K_20140815
15 August 2014

Sheet
Reference
Number
42 of 66