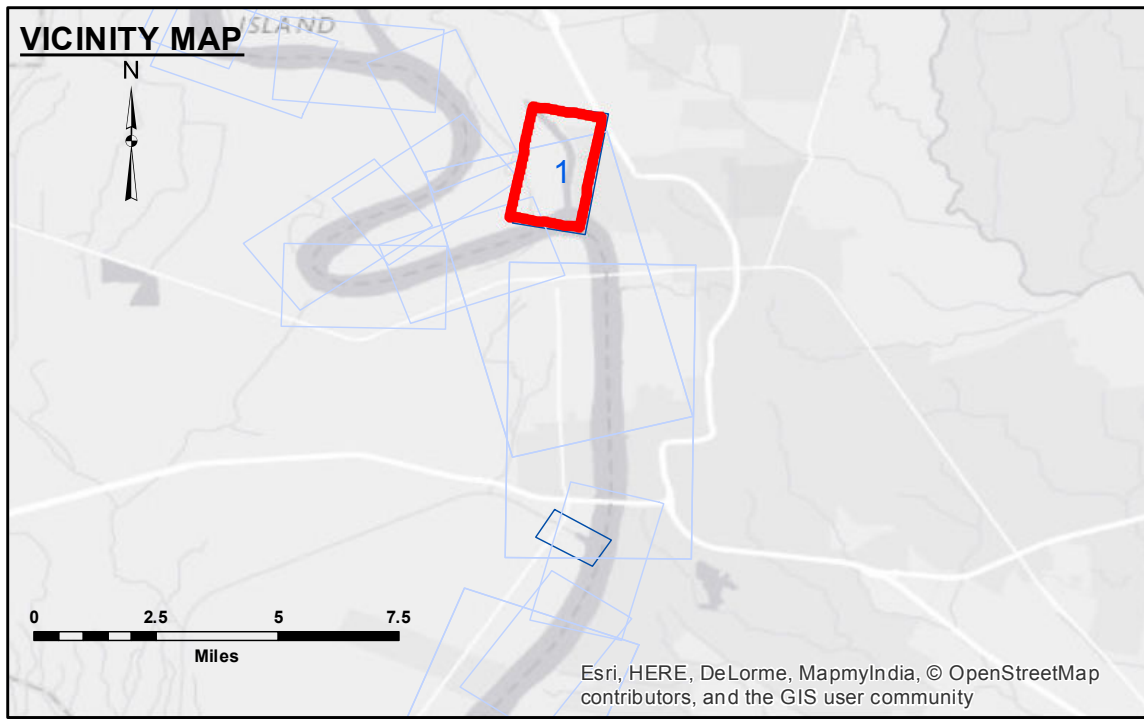


DISCLAIMER
 The information depicted on this map represents the results of a survey conducted by the U.S. Army Corps of Engineers. It is not to be used for any purpose other than that for which it was prepared. The user is responsible for the accuracy, reliability, usability, or suitability of the information for any purpose other than that for which it was prepared. The user is responsible for the accuracy, reliability, usability, or suitability of the information for any purpose other than that for which it was prepared. The user is responsible for the accuracy, reliability, usability, or suitability of the information for any purpose other than that for which it was prepared. The user is responsible for the accuracy, reliability, usability, or suitability of the information for any purpose other than that for which it was prepared.

Submitted:	Surveyed By: PM, JJA
Recommended:	Plotted By: BTJ
Approved:	Checked By: AN

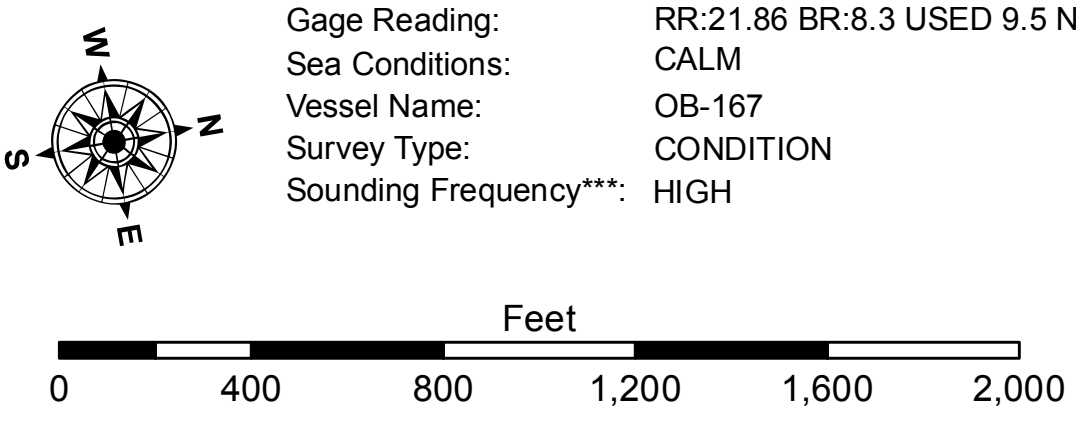
U.S. ARMY CORPS OF ENGINEERS
 NEW ORLEANS DISTRICT

BATON ROUGE HARBOR
BATON ROUGE HARBOR
BH_01_DEV_20151009
09 October 2015



LEGEND

--- Federal Navigation Channel	○ Cable Area	□ Borrow Area
— Federal Navigation Center Line	■ Placement Area	● Shoalest Sounding**
— As-built Pipeline/Cable	⊗ Anchorage Area	☆ Beacon, General
..... Unconfirmed Pipeline/Cable	⊗ Obstruction Point	◆ Red Navigation Buoy
— Project Depth Contour	⚓ Wrecks-Submerged	◆ Green Navigation Buoy



NOTES:
 Horizontal Coordinate System: North American Datum of 1983 (NAD83), projected to the State Plane Coordinate System (SPCS), Louisiana South Zone. Distance units in U.S. Survey Feet.
 Vertical Datum: Soundings are shown in feet and indicate depths below National Geodetic Vertical Datum of 1929 (NGVD29).
 Distances on the Mississippi River, above and below Head of Passes are shown at 1 mile intervals.
 The location of navigation aids are based on and provided by the U.S. Coast Guard.
 2012 Aerial Photography data source: USGS DOQQ
 Reference is N.O.A. Navigation Chart No. 11370.
 *** Shoalest Sounding per Quarter per Reach.
 ** High frequency (200 kHz) survey data represents the first signal return at a sounding location and will include suspended solids, known as "fluff", if present. Low frequency (20 kHz) survey data normally penetrates through this "fluff" layer to depict elevations of consolidated bottom material. Low frequency accuracies may vary depending on channel conditions and fathometer settings.

Sheet Reference Number
1 of 1