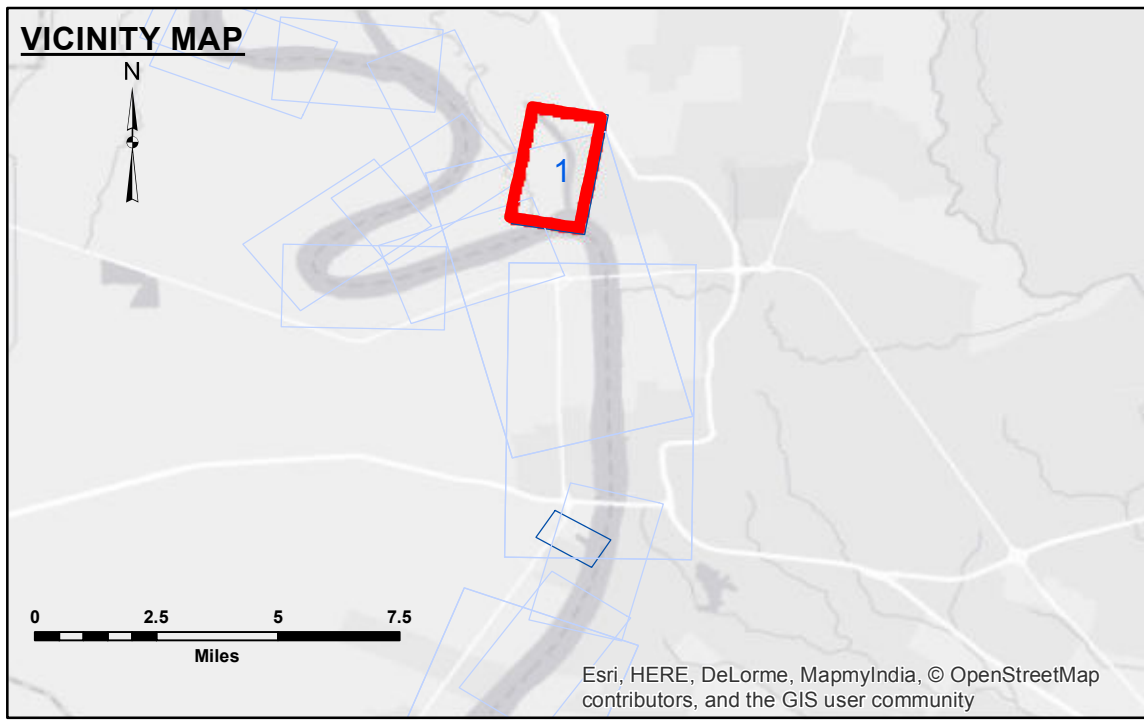


**TABLE OF COORDINATES**

| POINT NO. | X           | Y          |
|-----------|-------------|------------|
| 1         | 3320263.990 | 735657.752 |
| 2         | 3319967.816 | 738167.185 |
| 3         | 3320071.675 | 740217.209 |
| 4         | 3320382.865 | 741618.264 |
| 5         | 3319710.959 | 744354.696 |
| 6         | 3317097.280 | 747457.144 |

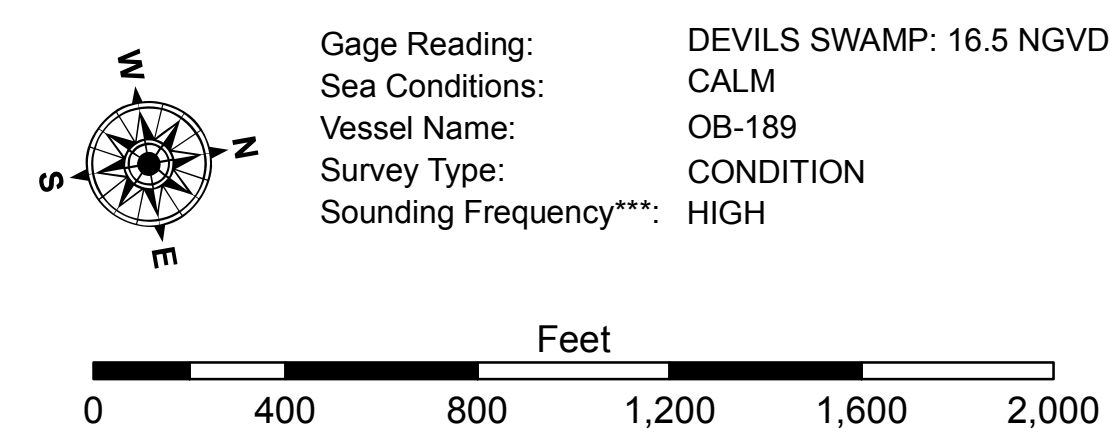
**CURVE #1 DATA**  
 $\Delta = 19^{\circ} 11' 16.58''$   
 $D = 0^{\circ} 56' 22.44''$   
 $R = 6098.1$   
 $T = 1030.8$   
 $L = 2042.2$   
 $LC = 2032.7$

**CURVE #2 DATA**  
 $\Delta = 52^{\circ} 38' 11.32''$   
 $D = 1^{\circ} 48' 10.98''$   
 $R = 3177.7$   
 $T = 1571.8$   
 $L = 2919.3$   
 $LC = 2817.7$



**LEGEND**

|                                  |                     |                         |
|----------------------------------|---------------------|-------------------------|
| --- Federal Navigation Channel   | ○ Cable Area        | □ Borrow Area           |
| — Federal Navigation Center Line | □ Placement Area    | ● Shoalest Sounding**   |
| — As-built Pipeline/Cable        | □ Anchorage Area    | ☆ Beacon, General       |
| ..... Unconfirmed Pipeline/Cable | ⊗ Obstruction Point | ◆ Red Navigation Buoy   |
| — Project Depth Contour          | ⚓ Wrecks-Submerged  | ◆ Green Navigation Buoy |
|                                  |                     | ■ -8' and above         |
|                                  |                     | ■ -8' to -10'           |
|                                  |                     | ■ -10' to -12'          |
|                                  |                     | ■ -12' and below        |



**NOTES:**  
 Horizontal Coordinate System:  
 North American Datum of 1983 (NAD83), projected to the State Plane Coordinate - System (SPCS), Louisiana South Zone. Distance units in U.S. Survey Feet.  
 Vertical Datum:  
 Soundings are shown in feet and indicate depths below National Geodetic Vertical Datum of 1929 (NGVD29).  
 Distances on the Mississippi River, above and below Head of Passes are shown at 1 mile intervals.  
 The location of navigation aids are base on and provided by the U.S. Coast Guard.  
 2015 Aerial Photography data source: NAIP  
 Reference is N.O.A.A. Navigation Chart No. 11370.  
 \*\* Shoalest Sounding per Quarter per Reach.  
 \*\*\* High frequency (200 kHz) survey data represents the first signal return at a sounding location and will include suspended solids, known as "fluff", if present. Low frequency (20 kHz) survey data normally penetrates through this "fluff" layer to depict elevations of consolidated bottom material. Low frequency accuracies may vary depending on channel conditions and fathometer settings.



**DISCLAIMER:**  
 The United States Government furnishes these data and the recipient accepts and uses them with the express understanding that the data are not to be used for any purpose other than that for which they were originally prepared, and that the user is responsible for the results of any use of the data for other than its intended purpose.  
 The information depicted on this map represents the results of a survey conducted on the date shown. The user is responsible for the results of any use of the data for other than its intended purpose.  
 The information depicted on this map represents the results of a survey conducted on the date shown. The user is responsible for the results of any use of the data for other than its intended purpose.

U.S. ARMY CORPS OF ENGINEERS  
 NEW ORLEANS DISTRICT

|   |                       |
|---|-----------------------|
| Submitted:  | Surveyed By:<br>DS/PS |
| Recommended:<br>Chief, Survey Section             | Plotted By:<br>BD     |
| Approved:<br>Chief, Waterways Maintenance Section | Checked By:<br>AC     |

**BATON ROUGE HARBOR  
 BATON ROUGE HARBOR  
 BH\_01\_DEV\_20170914\_CS  
 14 September 2017**

**Sheet Reference Number  
 1 of 1**