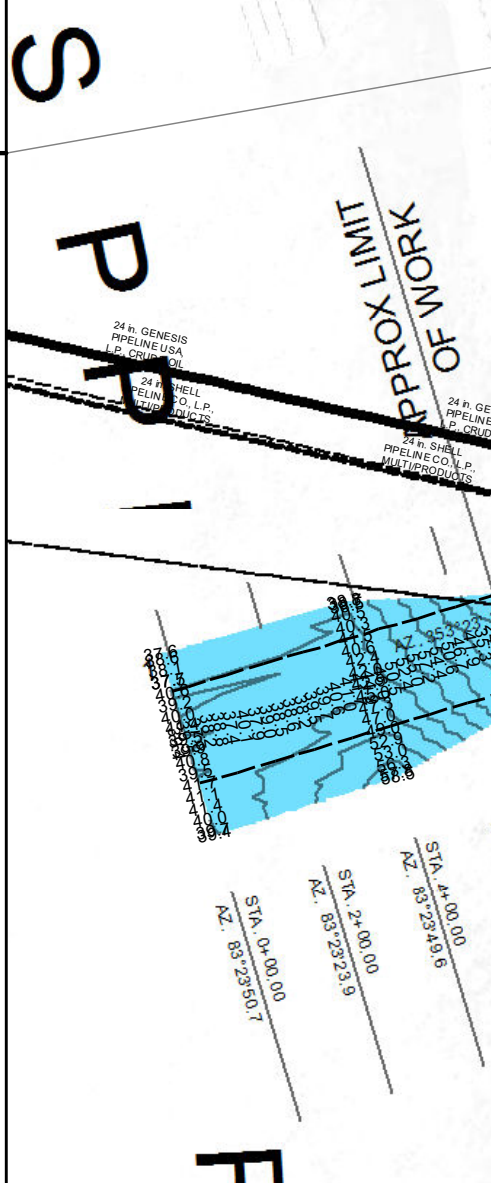


TABLE OF COORDINATES

POINT NO.	X	Y
1	3320263.990	735657.752
2	3319967.816	738187.185
3	3320071.875	740217.209
4	3320382.865	741618.264
5	3319710.959	744354.696
6	3317097.280	747457.144

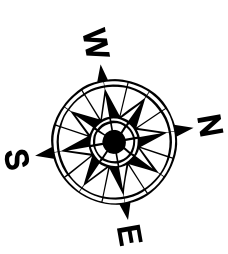
CURVE #1 DATA
 $\Delta = 19^\circ 11' 16.58''$
 $D = 0^\circ 56' 22.44''$
 $R = 6098.1$
 $T = 1030.8$
 $L = 2042.2$
 $LC = 2032.7$

CURVE #2 DATA
 $\Delta = 52^\circ 38' 11.32''$
 $D = 1^\circ 48' 10.98''$
 $R = 3177.7$
 $T = 1571.8$
 $L = 2919.3$
 $LC = 2817.7$

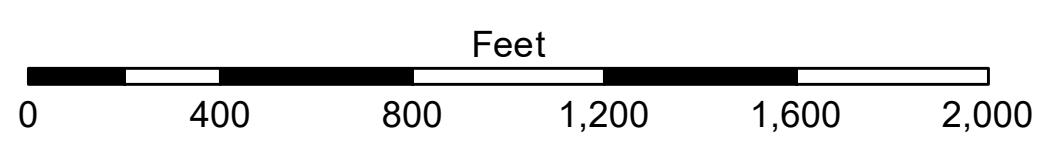


LEGEND

Federal Navigation Channel	Cable Area	Borrow Area	-8' and above
Federal Navigation Center Line	Placement Area	Shoalest Sounding**	-8' to -10'
As-built Pipeline/Cable	Anchorage Area	Beacon, General	-10' to -12'
Unconfirmed Pipeline/Cable	Obstruction Point	Red Navigation Buoy	-12' and below
Project Depth Contour	Wrecks-Submerged	Green Navigation Buoy	



Gage Reading: DEVILS SWAMP: 15.7 NGVD
 Sea Conditions: CALM
 Vessel Name: M/V LAFOURCHE
 Survey Type: CONDITION
 Sounding Frequency***: HIGH



NOTES:
 Horizontal Coordinate System: North American Datum of 1983 (NAD83), projected to the State Plane Coordinate System (SPCS), Louisiana South Zone. Distance units in U.S. Survey Feet.
 Vertical Datum: Soundings are shown in feet and indicate depths below National Geodetic Vertical Datum of 1929 (NGVD29).
 Distances on the Mississippi River, above and below Head of Passes are shown at 1 mile intervals.
 The location of navigation aids are based on and provided by the U.S. Coast Guard.
 2015 Aerial Photography data source: NAIP
 Reference is N.O.A.A. Navigation Chart No. 11370.
 *** Shoalest Sounding per Quarter per Reach.
 ** High frequency (200 kHz) survey data represents the first signal return at a sounding location and will include suspended solids, known as "fluff", if present. Low frequency (20 kHz) survey data normally penetrates through this "fluff" layer to depict elevations of consolidated bottom material. Low frequency accuracies may vary depending on channel conditions and fathometer settings.



DISCLAIMER:
 The United States Government furnishes these data and the recipient accepts and uses them with the express understanding that the data are not warranted for any purpose other than the specific purpose for which they were prepared. The user is responsible for the results of any use of the data for other than its intended purpose. The application of the data for other than its intended purpose may be hazardous to life or property. The user shall indemnify and hold the United States Government harmless from all claims, damages, and expenses, including reasonable attorneys' fees, that may be incurred by the United States Government as a result of the use of the data for other than its intended purpose. The information depicted on this map represents the results of a survey conducted on the date shown on the map. It is not intended to represent the general condition existing at that time. The user should not rely solely upon this map.

U.S. ARMY CORPS OF ENGINEERS NEW ORLEANS DISTRICT		
Submitted:	Reviewed By: DS/PS	Checked By: AC
Recommended:	Planned By: BD	
Approved:	Chief Survey Section	Chief Waterways Maintenance Section

**BATON ROUGE HARBOR
 BATON ROUGE HARBOR
 BH_01_DEV_20171116_CS
 16 November 2017**

**Sheet Reference Number
 1 of 1**