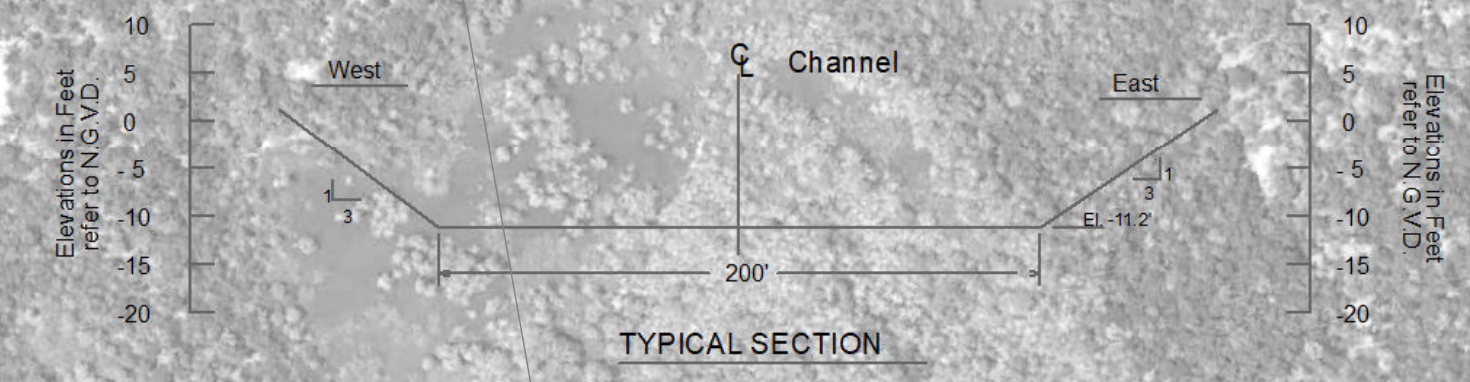


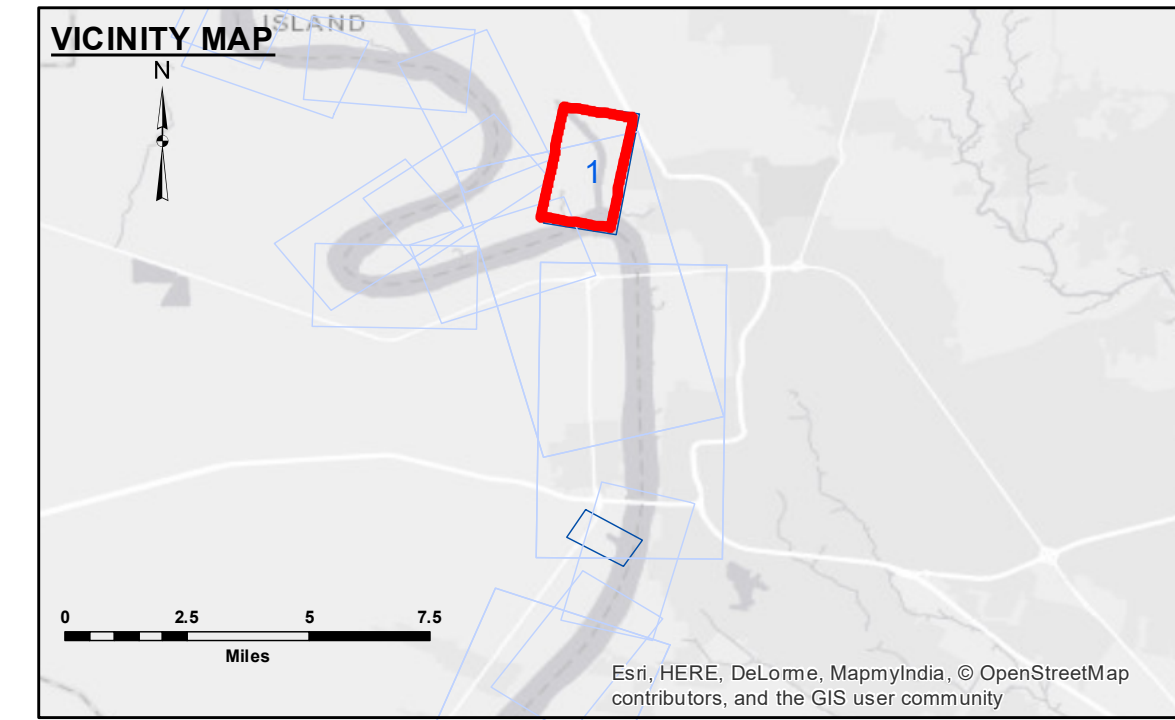
**TABLE OF COORDINATES**

POINT NO.	X	Y
1	3320263.990	735657.752
2	3319967.816	738187.185
3	3320071.675	740217.209
4	3320382.865	741618.264
5	3319710.959	744354.696
6	3317097.280	747457.144



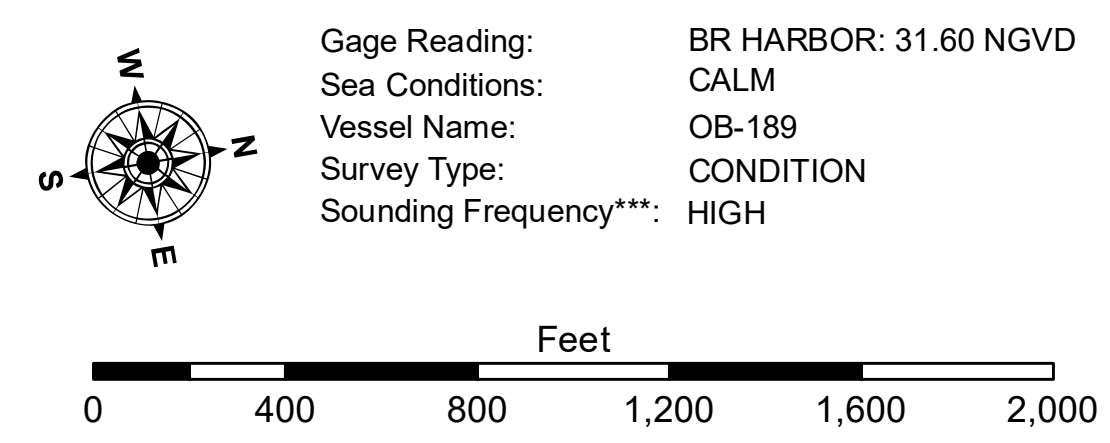
**CURVE #1 DATA**  
 $\Delta = 19^\circ 11' 16.58''$   
 $D = 0^\circ 56' 22.44''$   
 $R = 6098.1$   
 $T = 1030.8$   
 $L = 2042.2$   
 $LC = 2032.7$

**CURVE #2 DATA**  
 $\Delta = 52^\circ 38' 11.32''$   
 $D = 1^\circ 48' 10.98''$   
 $R = 3177.7$   
 $T = 1571.8$   
 $L = 2919.3$   
 $LC = 2817.7$



**LEGEND**

--- Federal Navigation Channel	○ Cable Area	□ Borrow Area
— Federal Navigation Center Line	□ Placement Area	● Shoalest Sounding**
— As-built Pipeline/Cable	□ Anchorage Area	☆ Beacon, General
..... Unconfirmed Pipeline/Cable	⊗ Obstruction Point	◆ Red Navigation Buoy
— Project Depth Contour	⚓ Wrecks-Submerged	◆ Green Navigation Buoy
		■ -8' and above
		■ -8' to -10'
		■ -10' to -12'
		■ -12' and below



**NOTES:**  
 Horizontal Coordinate System: North American Datum of 1983 (NAD83), projected to the State Plane Coordinate System (SPCS), Louisiana South Zone. Distance units in U.S. Survey Feet.  
 Vertical Datum: Soundings are shown in feet and indicate depths below National Geodetic Vertical Datum of 1929 (NGVD29).  
 Distances on the Mississippi River, above and below Head of Passes are shown at 1 mile intervals.  
 The location of navigation aids are base on and provided by the U.S. Coast Guard.  
 2015 Aerial Photography data source: NAIP  
 Reference is N.O.A.A. Navigation Chart No. 11370.  
 \*\*\* Shoalest Sounding per Quarter per Reach.  
 High frequency (200 kHz) survey data represents the first signal return at a sounding location and will include suspended solids, known as "fluff", if present. Low frequency (20 kHz) survey data normally penetrates through this "fluff" layer to depict elevations of consolidated bottom material. Low frequency accuracies may vary depending on channel conditions and fathometer settings.



**DISCLAIMER:**  
 The United States Government furnishes these data and the recipient accepts and uses them with the express understanding that the Government makes no warranty, expressed or implied, concerning the accuracy, completeness, reliability, usability or suitability for any particular purpose of the data. The user is responsible for the results of the application of the data for other than its intended purpose. Data contained in this report are subject to change without notice. The user is responsible for the results of the application of the data for other than its intended purpose. The user is responsible for the results of the application of the data for other than its intended purpose. The user is responsible for the results of the application of the data for other than its intended purpose.

U.S. ARMY CORPS OF ENGINEERS  
 NEW ORLEANS DISTRICT

Submitted:	Surveyed By: RYLAND/ADAMS
Recommended: Chief Survey Section	Plotted By: BD
Approved: Chief Waterways Maintenance Section	Checked By: AC

**BATON ROUGE HARBOR**  
**BATON ROUGE HARBOR**  
**BH\_01\_DEV\_20181026\_AD**  
**26 October 2018**

**Sheet Reference Number**  
**1 of 1**